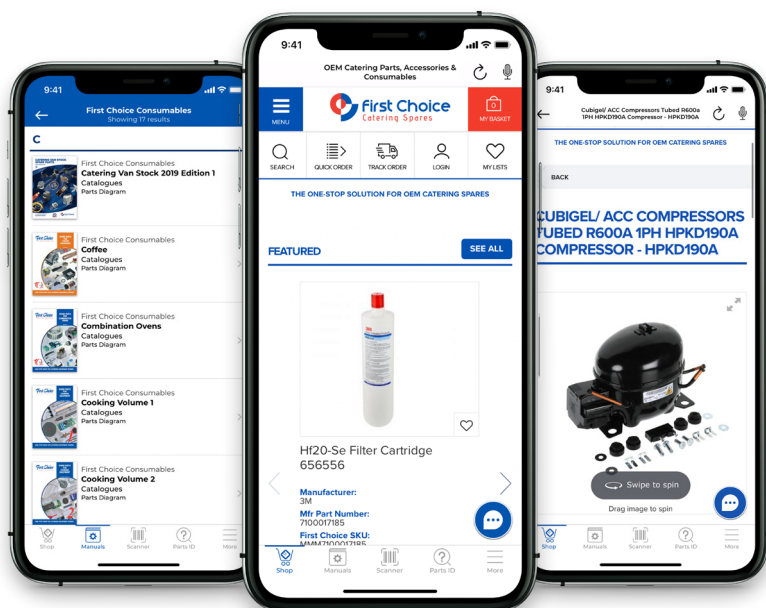


ESSENTIAL REFRIGERATION STOCK BROCHURE

SPRING 2021





YOUR SERVICE COMPANION APP

 **FIND PARTS AND AVAILABILITY**

 **LIVE CHAT WITH OUR TEAM**

 **VIEW EQUIPMENT DIAGRAMS**

DOWNLOAD FOR FREE TODAY!



CUSTOMER EXPERIENCE TEAM

Opening Hours

Monday – Friday 08:30 – 17:30

Telephone

01543 577 778

Email

enquiries@firstchoice-cs.co.uk

Web

www.firstchoice-cs.co.uk



Refrigeration Spares



Catering Spares



Laundry Spares



Bakery Spares



Coffee Spares



Technical Training



TECHNICAL TRAINING & SUPPORT FOR CATERING TECHNICIANS

Update your skills at our state of the art training facility.



CONTENTS

COMPRESSORS

COMPRESSORS & CONDENSING UNITS	4-7
--------------------------------	-----

BRANDS

3M	9
ADANDE	10
ELECTROLUX	10
FOSTER	11
FRIGOGLASS	11
HOSHIZAKI/GRAM	12
ISA	13
MANITOWOC	13
TRUE	14
WILLIAMS	14

ELECTRICAL



CAPACITORS	30
CONDENSATE DRAIN PUMPS	33-37
ELECTRICAL TERMINALS & CRIMPING TOOLS	45-46
FANS/FAN MOTORS	31-33
HEATERS/EVAPORATOR TRAYS	33
INDICATOR LAMPS & LIGHTING	26
PLUGS & FUSES	45
PRESSURE SWITCHES & COUPLERS	23
SWITCHES	25
THERMOSTATS/CONTROLLERS & PROBES	27-29
TIMERS & RELAYS	23-24

CLEANING & MAINTENANCE



CLEANING CHEMICALS	74-77
CLEANING WIPES	79
GLOVES & SAFETY GLASSES	80
LUBRICANTS & GREASES	78-79
MANUAL PUMP CLEANING SPRAYERS	73
SEALANTS & PTFE TAPE	79

VAN STOCK



ACCESS/LINE TAP VALVES	19
BALL AND VALVES	19-20 & 43
BRASS PIPE FITTINGS	18
COPPER PIPE & INSULATION	17
DOOR FITTINGS - COLDROOM/CABINET	41-42
GASKETS	42
HOSE CLAMPS	45
O-RING SETS	45
SHELVES & SHELF CLIPS	44
SIGHT GLASS AND DRIERS	21-22
TAPS & HOSES	38
THERMOSTATIC EXPANSION VALVE	20-21
WATER FILTERS	39-40
WATER SOLENOID VALVES	37

TOOLS



BRAZING	65-67
COMPARTMENT ORGANISERS	46-47 & 72
ELECTRICAL TAPES & CABLE TIES	17 & 47
FLUSHING KITS	72
HAND TOOLS	47 & 68-71
LEAK DETECTION	60-61 & 77
MANIFOLDS & TEST INSTRUMENTS	48-55
RECOVERY CYLINDERS & CONNECTORS	58
SCALES	59-60
SEALING KITS	73
THERMOMETERS	61-64
VACUUM PUMP OIL	58
VACUUM PUMPS/RECOVERY UNITS	56-58



To find the 'Part No' you are looking for, press CTRL+F (Windows) CMD+F (Mac) then simply search the part number you are looking for.

ACC/CUBIGEL COMPRESSORS



cubigel[®]
compressors

Electrical supply 220-240V 50Hz. Other supplies available on request.

Description	Motor	Displacement	Evaporator Temperature	Connection Type	Part No.
COMPRESSOR CSIR LBP R134A	1/4hp	8.85cc	-25 to 10°C	Tubed	GL90TB
COMPRESSOR CSIR LBP R404A	5/8hp	20.72cc	-25 to 10°C	Tubed	GX21TB
COMPRESSOR CSIR LBP R404A	1/5hp	5.98cc	-40 to -10°C	Tubed	ML60FB
COMPRESSOR CSR HMBP R404A	3/8hp	12.1cc	-25 to 10°C	Tubed	MPT12RA
COMPRESSOR CSR HMBP R404A	1.2hp	25.9cc	-25 to 10°C	Tubed	MS26TB
COMPRESSOR RSIR LBP R134A	1hp	20.72cc	-25 to 10°C	Tubed	MX21TB

**CLICK HERE TO SEE
THE FULL RANGE**



SUPCO SKC UNIVERSAL START KIT



Supco[®]
THE RIGHT CHOICE

For CSR compressors, includes potential relay, run and start capacitors. External thermal protector (overload not included). Polycarbonate case IP55 rating. Dimensions 207 x 124 x 83mm.

Description	Part No.
SKC100 STARTING KIT 1.0HP 220-240V 50HZ	SKC100
SKC150 STARTING KIT 1.5HP 220-240v 50HZ	SKC150

**CLICK HERE TO SEE
THE FULL RANGE**



DANFOSS/SECOP COMPRESSORS



Electrical supply 220-240V 50Hz. Other supplies available on request.

Description	Motor	Displacement	Evaporator Temperature	Part No.
COMPRESSOR CSIR HMLBP R134A	1/5hp	6.93cc	-30 to 10°C	FR7.5G
COMPRESSOR CSR LMBP R404A	5/8hp	17.69cc	-45 to -5°C	SC18CL
COMPRESSOR CSR MHBP R404A	3/4hp	15.28cc	-20 to 15°C	SC15DL
COMPRESSOR CSIR LHBP R134A	1/4hp	10.297cc	-35 to 15°C	SC10G
COMPRESSOR CSR HMLBP R404A/R507	1hp	17.68cc	-30 to 15°C	SC18MLX
COMPRESSOR CSIR HMBP R134A	1/6hp	5.08cc	-30 to 15°C	TL5G

**CLICK HERE TO SEE
THE FULL RANGE**



EMBRACO/ASPERA COMPRESSORS



Electrical supply 220-240V 50Hz. Other supplies available on request.

Description	Motor	Displacement	Evaporator Temperature	Connection Type	Part No.
COMPRESSOR RSCR LBP R134A	1/6hp	5.19cc	-35 to -10°C	Tubed	EMIE65HEP
COMPRESSOR CSR LBP R404A	1.2hp	26.2cc	-35 to -10°C	Tubed	NJ2192GK
COMPRESSOR CSR LBP R404A	5/8hp	14.4cc	-35 to -10°C	Tubed	NT2168GK
COMPRESSOR CSIR LBP R404A	1/2hp	8.77cc	-40 to -10°C	Tubed	NEK2134GK
COMPRESSOR CSR LBP R404A	3/4hp	12.11cc	-40 to -10°C	Tubed	NEU2155GK

**CLICK HERE TO SEE
THE FULL RANGE**



TECUMSEH/L'UNITE COMPRESSORS



Electrical supply 220-240V 50Hz. Other supplies available on request.

Description	Motor	Displacement	Evaporator Temperature	Connection Type	Part No.
COMPRESSOR CSR HMBP R404A	5/8hp	12.01cc	-15 to 15°C	Valve	AE4470Z
COMPRESSOR CSIR LBP R404A	5/8hp	15.2cc	-40 to -12.2°C	Tubed	CAJ2428Z-T
COMPRESSOR CSIR HBP R134A	1/6hp	5.20cc	-15 to 15°C	Tubed	THB4419Y

**CLICK HERE TO SEE
THE FULL RANGE**

COPELAND SCROLL COMPRESSORS



Electrical supply 220-240V 50Hz (other supplies available on request).

Description	Motor	Displacement	Locked Rotor Current	Max Operating Current	Part No.
SCROLL COMPRESSOR R407C	1.5hp	4.4cc	35A	10A	ZR18K5E-PFJ-622
SCROLL COMPRESSOR R134A/R407C	2hp	5.3cc	47A	11A	ZR22K3E-PFJ-522
SCROLL COMPRESSOR R134A/R407C	2.5hp	6.8cc	61A	15A	ZR28K3E-PFJ-522
SCROLL COMPRESSOR R134A/R407C	2.8hp	8cc	76A	17A	ZR34K3E-PFJ-522

**CLICK HERE TO SEE
THE FULL RANGE**

MANEUROP COMPRESSORS



Maneurop®

RECIPROCATING COMPRESSORS

Electrical supply 220-240V/1Ph/50Hz or 415V/3Ph/50Hz.

Description	Motor	Displacement	Locked Rotor Current	Part No.
COMPRESSOR H/M/LBP R134A/R404A/R407C/R507	380-400V / 3Ph / 50Hz	30.23cc	20A	MTZ18JA4BVE
COMPRESSOR H/M/LBP R134A/R404A/R407C/R507	380-400V / 3Ph / 50Hz	271.55cc	130A	MTZ160HW4AVE
COMPRESSOR LBP R404A/R507	220-240V / 1Ph / 50Hz	48cc	37A	NTZ048.5LRI
COMPRESSOR LBP R404A/R507	380-400V / 3Ph / 50Hz	48cc	16A	NTZ048A4LR1A
COMPRESSOR LBP R404A/R507	380-400V / 3Ph / 50Hz	96cc	32A	NTZ096.4LRI

**CLICK HERE TO SEE
THE FULL RANGE**



HITACHI SCROLL COMPRESSORS

Electrical supply 220-240V 50Hz 1ph.

Description	Motor	Displacement	Evap Temp	Part No
HORIZONTAL SCROLL COMPRESSOR M/LBP R404A	2.5hp / 240V / 1Ph / 50Hz	35.7cc	-45°C to 10°C	DS1836S1
HORIZONTAL SCROLL COMPRESSOR M/LBP R404A	1.5hp / 240V / 1Ph / 50Hz	20.1cc	-45°C to 10°C	ZS1120S1
HORIZONTAL SCROLL COMPRESSOR M/LBP R404A	1hp / 240V / 1Ph / 50Hz	15.9cc	-45°C to 10°C	ZS7516S1

HITACHI



EMBRACO CONDENSING UNITS

- + Easy to install Embraco Condensing units
- + Available for gases R-134a, R-290 and R-404A
- + Electrical supply 220-240V 50Hz or 230V 50Hz.

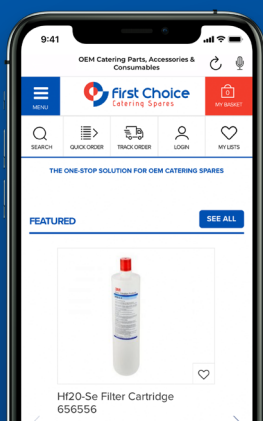
Other models of Embraco Condensing units are available on request.

Description	Electrics	Configuration	Part No
CONDENSING UNIT CSIR HBP R-134a	220-240V 50Hz	with Flare Valves & Receiver	UNEU6210Z
CONDENSING UNIT CSIR LBP R-290	220-240V 50Hz	with Solder Valves & Receiver	UNEU2155U
CONDENSING UNIT CSIR LBP R-404A	220-240V 50Hz	with Flare Valves & Receiver	UEMT2125GK

embraco
COMPRESORES



HOME OF THE REFRIGERATION BRANDS



**DOWNLOAD
OUR FREE APP!**

THE PERFECT SERVICE COMPANION

- + FIND PARTS AND AVAILABILITY
- + LIVE CHAT WITH OUR TEAM
- + VIEW EQUIPMENT DIAGRAMS

 **FIRST CHOICE GROUP**



NEW!
**ORDER UNTIL
7PM
ONLINE**

FOR NEXT DAY DELIVERY



Fixed head and replaceable filter cartridge system provides consistent high quality water for commercial ice, coffee, Beverage & vending machines



Reduction Claims	Part No.	Cartridge
Particulate, chlorine taste and odour, cyst1, scale	7100017185	HF20-S
Particulate, chlorine taste and odour, scale	7000050414	HF25-S
Bacteria2, particulate, chlorine taste and odour, cyst1, scale	7100008238	HF40-S
Particulate, chlorine taste and odour, scale	7000050884	HF45-S
Bacteria2, particulate, chlorine taste and odour, cyst1, scale	7000001752	HF60-S

Ice machine size kgs. - day	Cartridge
Up to 340.2 kgs	HF20-S or HF25-S
Up to 453.6 kgs	HF40-S or HF45-S
Up to 657.7 kgs	HF60-S or HF65-S
Up to 984.2 kgs	HF90-S or HF95-S

**CLICK HERE TO SEE
THE FULL RANGE**





Unique to Adande, the insulated drawers rather than the cabinets, ensures that the cold air surrounding the food is retained each time a unit is opened. Low-velocity cooling improves Adande's temperature stability and guarantees humidity control at all times.

**CLICK HERE TO SEE
THE FULL RANGE**



Electrolux Professional is one of the leading global providers of food service, beverage and laundry solutions, key products include refrigerated cabinets, chillers and machines (espresso and cold beverage and juice dispensers as well as frozen drink and ice cream dispensers, and related speciality accessories and systems. Focus on solutions where there is a need for high-performing, reliable equipment, with significant aftermarket requirements over the equipment lifecycle and where customers are focused on productivity and total cost of ownership.

**CLICK HERE TO SEE
THE FULL RANGE**



HOW-TO 
ID YOUR MODEL





The Refrigeration Experts

Europe's leading commercial refrigeration manufacturer. commercial fridges and freezers, are at the forefront of new technology, pioneering standards in temperature control, hygiene, efficiency and appearance.

**CLICK HERE TO SEE
THE FULL RANGE**



HOW-TO 
ID YOUR MODEL



MASTER DISTRIBUTOR

Frigoglass works as a strategic partner to the world's top beverage brands. The innovative Frigoglass coolers improve point-of-sale branding to drive impulse consumption, whilst achieving an environmentally-friendly and sustainable solution.

**CLICK HERE TO SEE
THE FULL RANGE**





**CLICK HERE TO SEE
THE FULL RANGE**



Hoshizaki is a leading manufacturer of commercial kitchen and food service equipment. And by merging with refrigeration specialist Gram Commercial, have brought together the brilliance of Japanese engineering and the intelligence of Danish design. Their range now features an extended line of kitchen and food service equipment including ice makers, dispensers, refrigerators, freezers, and sushi cases.

Placing reliability, durability and energy efficiency at the centre of design process, Hoshizaki engineers have helped us build an international reputation for high quality, well-designed products.



**CLICK HERE TO SEE
THE FULL RANGE**



And by merging with refrigeration specialist Gram Commercial, collaboration has created a connected, innovative and responsible manufacturer of cold solutions.





your visible value

MASTER DISTRIBUTOR

Its range includes promotional ice cream cabinets to frozen food display freezers, dairy display cabinets and commercial beverage coolers.

**CLICK HERE TO SEE
THE FULL RANGE**



MASTER DISTRIBUTOR

Manitowoc ice, part of the welbilt group, are dedicated to providing effortless workflow in the kitchen, harnessing thoughtful engineering and expertise for streamlined designs and functionality. Curating an extensive portfolio from modular systems to remotely controlled units, constantly innovating intuitive designs to help business realise it's full potential.

**CLICK HERE TO SEE
THE FULL RANGE**





MASTER DISTRIBUTOR

True Refrigeration manufactures and supplies market leading refrigeration, built with the environment and sustainability at its very core. Using the highest quality materials and innovative technology, True has built a global reputation for state-of-the-art equipment.

**CLICK HERE TO SEE
THE FULL RANGE**

HOW-TO
ID YOUR MODEL



One of the world's leading manufacturers and suppliers of professional refrigeration with a global reputation for performance, quality and value for money. All enquires are model and serial specific so finding a dataplate is essential.

**CLICK HERE TO SEE
THE FULL RANGE**

HOW-TO
ID YOUR MODEL



DOWNLOAD A COPY TO SEE OUR COMPLETE RANGE!



Download your copy at www.firstchoice-cs.co.uk/van-stock
Or request a printed copy at our website.

ADDITIONAL OEM BRANDED BROCHURES

AVAILABLE TO DOWNLOAD HERE



Category Sections

We have designed handy sub sections for quick and easy look ups by product type. Just look for the icons at the top of each page for reference.



Electrical

Our top recommended blend of electrical parts and products for the commercial cold sector in one handy sub section. Created by our years of industry technical expertise.



Van Stock

Every essential item you need to complete your service job and get your machines back up and running. From filters to fitters, solenoid's to sight glasses. It's all here.



Tools

In unison with our First Choice Technical Training Division we have complied this bespoke section of our best suited tools for the commercial catering cold sector. For you the customer to use, fix and stock up!



Cleaning & Maintenance

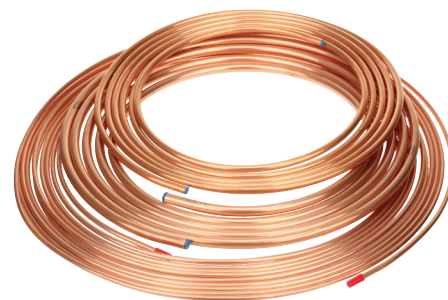
Never has hygiene and cleanliness been more vital for your onsite and in van needs. We've up stocked and updated our portfolios to comply with all the latest enhanced regulations. Find out more in this comprehensive section.



COPPER REFRIGERATION PIPE

Soft tempered copper coils to BS EN 12735-1. Other sizes available on request.

	6 METRE ROLL	15 METRE ROLL	30 METRE ROLL
Description	Part No.	Part No.	Part No.
1/4" COPPER PIPE	601001	601002	601003
3/8" COPPER PIPE	601005	601006	601007
1/2" COPPER PIPE	601008	601009	601010
5/8" COPPER PIPE	601015	601014	-



KAIFLEX ST INSULATED TUBE

Class EN-13501-1 which is the new European standard that replaces Class O. Supplied in 2m lengths. Individually bagged 15m coil to reduce waste and the number of butt joints are available on request.

	9MM THICK	13MM THICK	19MM THICK
Description	Part No.	Part No.	Part No.
KAIFLEX ST TUBE for 1/4" pipe	30030210	30030230	-
KAIFLEX ST TUBE for 3/8" pipe	30030211	30030231	-
KAIFLEX ST TUBE for 1/2" pipe	30030212	30030232	-
KAIFLEX ST TUBE for 5/8" pipe	30030213	30030233	30030252
KAIFLEX ST TUBE for 3/4" pipe	30030214	30030234	30030253
KAIFLEX ST TUBE for 7/8" pipe	30030215	30030235	30030254



KAIFLEX INSULATION ADHESIVE

Designed to cure quickly and create a water vapour tight bond between Kaiflex surfaces, pipe and ductwork.

Description	Part No.
PIPE INSULATION ADHESIVE 220G	30030331



KAIFLEX ST INSULATED TAPE

Class EN-13501-1 which is the new European standard that replaces Class O. Kaiflex ST insulation supplied in rolls of self adhesive tape 15m long.

Description	Sold in Multiples of	Part No.
KAIFLEX INSULATED TAPE 3mm x 50mm	1	607024
KAIFLEX INSULATED TAPE 3mm x 50mm	5	607024-5
KAIFLEX INSULATED TAPE 3mm x 50mm	12	607024-12



ALU TAPE

Alu-TEC coating provides a durable anti-static surface finish with a self adhesive backing to protect insulation from damage. Suitable for temperature of -25°C to +75°C.

Description	Part No.
ROLL OF ALU TAPE 50mm wide x 45m in length	607025

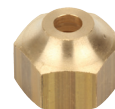


FLARE NUTS & FLARE GASKETS

Description	Part No.
1/4" FLARE NUT (short)	603001
5/16" FLARE NUT (short)	603002
3/8" FLARE NUT (short)	603003
1/2" FLARE NUT (short)	603004
5/8" FLARE NUT (short)	603005
3/4" FLARE NUT (short)	603006

Description	Part No.
1/4" TUBE TO 3/8" FLARE REDUCING NUT	603007
3/8" TUBE TO 1/2" FLARE REDUCING NUT	603008
1/2" TUBE TO 5/8" FLARE REDUCING NUT	603009
5/8" TUBE TO 3/4" FLARE REDUCING NUT	603010

Description	Part No.
1/4" FLARE GASKET	603011
3/8" FLARE GASKET	603012
1/2" FLARE GASKET	603013



FLARE CONNECTORS

Male to male.

Description	Part No.
1/4" EQUAL FLARE CONNECTOR	603014
3/8" EQUAL FLARE CONNECTOR	603015
1/2" EQUAL FLARE CONNECTOR	603016
5/8" EQUAL FLARE CONNECTOR	603017



COPPER CAPILLARY TUBE

	PER METRE	30.5 METRE ROLL
Description	Part No.	Part No.
CAPILLARY TUBE 0.026"/0.660mm	611001/1	611001
CAPILLARY TUBE 0.031"/0.790mm	611002/1	611002
CAPILLARY TUBE 0.036"/0.900mm	611003/1	611003
CAPILLARY TUBE 0.042"/1.066mm	611004/1	611004
CAPILLARY TUBE 0.047"/1.193mm	611005/1	611005
CAPILLARY TUBE 0.052"/1.320mm	611006/1	611006
CAPILLARY TUBE 0.060"/1.530mm	611010/1	611010



SCHRADER TYPE ACCESS VALVE

10cm tail for ease of bending and positioning, fitted with dust cap/tube end protector.

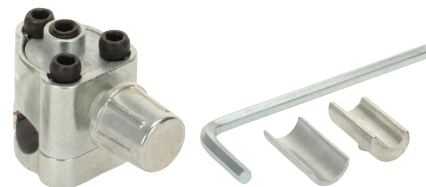
Description	Sold in Multiples of	Part No.
1/4" ACCESS VALVE	1	604001
1/4" ACCESS VALVE	10	604001-10
1/4" ACCESS VALVE	50	604001-50
1/4" ACCESS VALVE CORES - PACK OF 5	1	060749



SUPCO BPV31 BULLET PIERCING VALVE

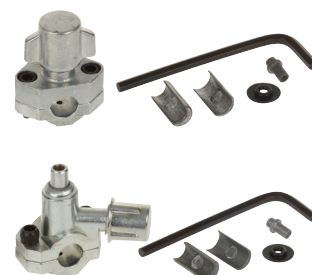
A sealing force of over 180 inch lbs, torque tested with 450 lbs. Pressure tested at 250°F. For OD size 1/4", 5/16" and 3/8".

Description	Part No.
BPV31 LINE TAP VALVE	BPV31



DIVERSITECH MAC ADJUSTABLE LINE TAP VALVE

Description	Sold in Multiples of	Part No.
1/4" to 3/8" LINE TAP VALVE - TOP ENTRY	1	QTM-1
1/4" to 3/8" LINE TAP VALVE - TOP ENTRY	5	QTM-1-5
1/2" to 5/8" LINE TAP VALVE - TOP ENTRY	1	QTM-2
1/4" to 3/8" LINE TAP VALVE - SIDE ENTRY	1	QT-1
1/2" to 5/8" LINE TAP VALVE - SIDE ENTRY	1	QT-2



DIVERSITECH DVC-1G ADAPTOR

Description	Sold in Multiples of	Part No.
DCV-1G VALVE ADAPTOR FOR DLT VALVES	1	6040024



DIVERSITECH DLT LINE TAP VALVE

Description	Sold in Multiples of	Part No.
DLT-4G LINE TAP VALVE	1	604002
DLT-4G LINE TAP VALVE	10	604002-10



ROTALOCK VALVES

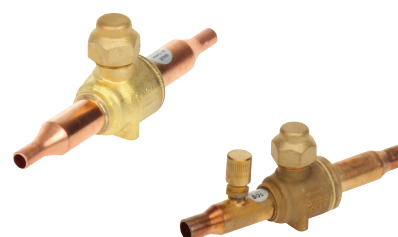
Description	Part No.
ROTALOCK VALVE 1" FOR 5/8" TUBE	013659
ROTALOCK VALVE 1.25" FOR 5/8" TUBE	013661



DANFOSS GBC BALL VALVES

Manually operated shut off valves suitable for bi-directional flow in liquid, suction and hot gas lines. Available with and without Schraeder access valve. Suitable for CFC, HCFC and HFC refrigerants. Max working pressure 45 bar.

Description	WITHOUT VALVE	WITH SCHRAEDER VALVE
	Part No.	Part No.
BALL VALVE 1/4" SOLDER	GBC6S	GBC6S-SCHRAEDER
BALL VALVE 3/8" SOLDER	GBC10S	GBC10S-SCHRAEDER
BALL VALVE 1/2" SOLDER	GBC12S	GBC12S-SCHRAEDER
BALL VALVE 5/8" SOLDER	GBC16S	GBC16S-SCHRAEDER
BALL VALVE 3/4" SOLDER	GBC18S	GBC18S-SCHRAEDER
BALL VALVE 7/8" SOLDER	GBC22S	-



DANFOSS EVR SOLENOID VALVES

EVR valves are servo-operated solenoid valves for liquid, suction and hot gas lines. Valves with solder connections are available on request.

Description	Connection	Max Pressure (bar)	Part No.
EVR-3 SOLENOID VALVE 1/4"	Flared	45.2	EVR-3-1/4
EVR-6 SOLENOID VALVE 3/8"	Flared	45.2	EVR-6-3/8
EVR-10 SOLENOID VALVE 1/2"	Flared	35	EVR-10-1/2

240V coils for Danfoss EVR solenoid valves. Other voltages available on request.

Description	Part No.
240V SOLENOID COIL WITH TERMINAL BOX	EV-240-TB
240V SOLENOID COIL WITH CABLE	EV-240-CABLE



SOLENOID VALVE OPERATING MAGNET

This solenoid magnet is the ideal tool for the service/maintenance engineer who requires the solenoid valve to be operated manually during installation, commissioning or when power is not available.

Description	Part No.
SOLENOID MAGNET (WHITE) TO FIT STEM SIZE OF 10.5mm	060540
SOLENOID MAGNET (ORANGE) TO FIT STEM SIZE OF 15.5mm	060541
SOLENOID MAGNET (RED) TO FIT STEM SIZE OF 18mm	060542



DANFOSS T2/TE2 THERMOSTATIC EXPANSION VALVES

Used for liquid injection into evaporators on both refrigeration and air conditioning systems using fluorinated refrigerants.

Description	Refrigerant	Inlet Connection	Outlet Connection	Equalisation Connection	Part No.
TEN2 EXT EQUALISED	R134a	Flare 3/8"	Solder 1/2"	Solder 1/4"	068Z3385
TES2 EXT EQUALISED	R404A/R507	Flare 3/8"	Solder 1/2"	Solder 1/4"	068Z3415
TEX2 EXT EQUALISED	R22	Flare 3/8"	Solder 1/2"	Solder 1/4"	068Z3284
TEZ2 EXT EQUALISED	R407C	Flare 3/8"	Solder 12mm	Solder 6mm	068Z3503
TEN2 EXT EQUALISED	R134a	Flare 3/8"	Flare 1/2"	Flare 1/4"	068Z3348
TES2 EXT EQUALISED	R404A/R507	Flare 3/8"	Flare 1/2"	Flare 1/4"	068Z3403
TEX2 EXT EQUALISED	R22	Flare 3/8"	Flare 1/2"	Flare 1/4"	068Z3209
TEZ2 EXT EQUALISED	R407C	Flare 3/8"	Flare 1/2"	Flare 1/4"	068Z3501
TN2 INT EQUALISED	R134a	Flare 3/8"	Solder 1/2"	-	068Z3383
TS2 INT EQUALISED	R404A/R507	Flare 3/8"	Solder 1/2"	-	068Z3414
TZ2 INT EQUALISED	R407C	Flare 3/8"	Flare 1/2"	-	068Z3496



ORIFICE FOR DANFOSS T2/TE2 THERMOSTATIC EXPANSION VALVES

Orifice assemblies with filter. Two different style for use with solder adapter or standard configuration.

Description					STANDARD DESIGN	SOLDER ONLY DESIGN
	Capacity R407C Range N	Capacity R134a Range N	Capacity R404A Range N	Capacity R404A Range B	Part No.	Part No.
0X ORIFICE	0.5	0.4	0.38	0.38	068-2002	-
00 ORIFICE	1.1	0.9	0.7	0.7	068-2003	068-2090
01 ORIFICE	2.7	1.8	1.6	1.6	068-2010	068-2091
02 ORIFICE	3.8	2.6	2.1	2.1	068-2015	068-2092
03 ORIFICE	5.6	4.6	6	4.9	068-2006	068-2093
04 ORIFICE	8.6	6.7	6	4.9	068-2007	068-2094
05 ORIFICE	11.3	8.6	7.7	6	068-2008	068-2095
06 ORIFICE	16.7	10.5	9.1	6.6	068-2009	068-2096



DANFOSS EXPANSION VALVE ADAPTOR

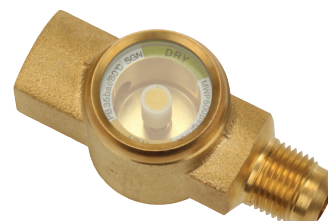


Description	Part No.
3/8" SOLDER TO 3/8" FLARE ADAPTOR	068-206066

DANFOSS SGN SIGHT GLASSES

Used to indicate the condition of the refrigerant in the liquid line, the moisture content in the refrigerant and the flow in the oil return line from the oil separator.

Description	Inlet Connection	Outlet Connection	Part No.
SGN SIGHT GLASS FLARED	1/4" External Flared	1/4" External Flared	SGN6
SGN SIGHT GLASS FLARED	3/8" External Flared	3/8" External Flared	SGN10
SGN SIGHT GLASS FLARED	1/2" External Flared	1/2" External Flared	SGN12
SGN SIGHT GLASS FLARED	5/8" External Flared	5/8" External Flared	SGN16
SGN SIGHT GLASS FLARED	1/4" Internal Flared	1/4" External Flared	SGN6MF
SGN SIGHT GLASS FLARED	3/8" Internal Flared	3/8" External Flared	SGN10MF
SGN SIGHT GLASS SOLDER	1/4" Internal Solder	1/4" Internal Solder	SGN6SFF
SGN SIGHT GLASS SOLDER	3/8" Internal Solder	3/8" Internal Solder	SGN10SFF



DANFOSS DCL SOLID CORE DRIERS

The DCL liquid line filter driers protect refrigeration and air conditioning systems from moisture, acids and solid particles thus eliminating harmful chemical reactions and abrasive impurities.

Description	Core Volume	Drying Capacity (at 24°C)			Part No.
		R134a	R404A/R507	R407A	
FLARED 1/4" DRIER	41cm ³	4.5kg	7kg	4kg	DCL032
FLARED 1/4" DRIER	67cm ³	6.5kg	10kg	6kg	DCL052
FLARED 3/8" DRIER	67cm ³	6.5kg	10kg	6kg	DCL053
FLARED 1/4" DRIER	104cm ³	10kg	16kg	9.5kg	DCL082
FLARED 3/8" DRIER	104cm ³	10kg	16kg	9.5kg	DCL083
FLARED 1/2" DRIER	104cm ³	10kg	16kg	9.5kg	DCL084
FLARED 1/4" DRIER	234cm ³	24kg	37kg	22kg	DCL162
FLARED 3/8" DRIER	234cm ³	24kg	37kg	22kg	DCL163
FLARED 1/2" DRIER	234cm ³	24kg	37kg	22kg	DCL164
FLARED 5/8" DRIER	234cm ³	24kg	37kg	22kg	DCL165
FLARED 3/8" DRIER	494cm ³	47kg	77kg	44kg	DCL303
FLARED 1/2" DRIER	494cm ³	47kg	77kg	44kg	DCL304
FLARED 5/8" DRIER	494cm ³	47kg	77kg	44kg	DCL305
FLARED 3/4" DRIER	494cm ³	47kg	77kg	44kg	DCL306
SOLDER 1/4" DRIER	41cm ³	4.5kg	7kg	4kg	DCL032S
SOLDER 1/4" DRIER	67cm ³	6.5kg	10kg	6kg	DCL052S
SOLDER 3/8" DRIER	67cm ³	6.5kg	10kg	6kg	DCL053S
SOLDER 1/4" DRIER	104cm ³	10kg	16kg	9.5kg	DCL082S
SOLDER 3/8" DRIER	104cm ³	10kg	16kg	9.5kg	DCL083S
SOLDER 1/2" DRIER	104cm ³	10kg	16kg	9.5kg	DCL084S
SOLDER 1/4" BIFLOW DRIER	234cm ³	24kg	37kg	22kg	DCL162S
SOLDER 3/8" BIFLOW DRIER	234cm ³	24kg	37kg	22kg	DCL163S
SOLDER 1/2" BIFLOW DRIER	234cm ³	24kg	37kg	22kg	DCL164S
SOLDER 5/8" BIFLOW DRIER	234cm ³	24kg	37kg	22kg	DCL165S
SOLDER 3/8" BIFLOW DRIER	494cm ³	47kg	77kg	44kg	DCL303S
SOLDER 1/2" BIFLOW DRIER	494cm ³	47kg	77kg	44kg	DCL304S
SOLDER 5/8" BIFLOW DRIER	494cm ³	47kg	77kg	44kg	DCL305S



SPORLAN CATCH ALL DRIERS

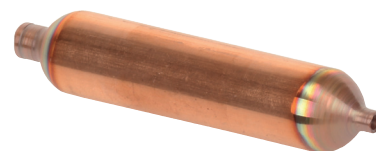
Molded porous core to remove moisture from the refrigerant and lubricant by adsorbing and retaining moisture deep within the desiccant granules.

Description	Core Volume	FLARE CONNECTION	SOLDER CONNECTION
		Part No.	Part No.
1/4" SPORLAN DRIER	49cm ³	C-032	C-032S
1/4" SPORLAN DRIER	82cm ³	C-052	C-052S
3/8" SPORLAN DRIER	82cm ³	C-053	C-053S
1/4" SPORLAN DRIER	147cm ³	C-082	C-082S
3/8" SPORLAN DRIER	147cm ³	C-083	C-083S
1/2" SPORLAN DRIER	147cm ³	C-084	C-084S
3/8" SPORLAN DRIER	262cm ³	C-163	C-163S
1/2" SPORLAN DRIER	262cm ³	C-164	C-164S



COPPER SPUN DRIERS

Description	SINGLE PART	10 PACK
	Part No.	Part No.
5.5G COPPER SPUN DRIER 3/16" x 0.092 Solder connection	604003	-
5.5G COPPER SPUN DRIER 1/4" x 0.092 Solder connection	604004	-
10G COPPER SPUN DRIER 1/4" x 0.092 Solder connection	604005	-
15G COPPER SPUN DRIER 1/4" x 0.092 Solder connection	604014	604014-10
20G COPPER SPUN DRIER 1/4" x 0.092 Solder connection	604006	604006-10
20G COPPER SPUN DRIER 1/4" x 1/4" Solder connection	604007	-
30G COPPER SPUN DRIER 1/4" x 0.092 Solder connection	604008	-
30G COPPER SPUN DRIER 1/4" x 1/4" Solder connection	604009	-



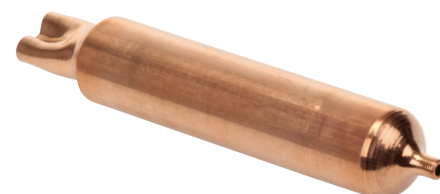
HERCULES DRIER

Description	Part No.
30G HERCULES DRIER 1/4" x 5/16" Solder connection	010871



DUAL OUTLET DRIERS

Description	Part No.
25G DUAL OUTLET DRIER 2x1/4" x 0.092 Solder connection	602001
40G DUAL OUTLET DRIER 2x1/4" x 1/4" Solder connection	6041096



DUAL INLET DRIER WITH SCHRADER VALVE

Description	Part No.
9G DUAL INLET DRIER 1/4" + SCHRADER VALVE TO 1/4"	DXA-5



COPPER SPUN ACCUMULATOR

Description	Part No.
SLAS30-5-6 ACCUMULATOR 3/8" Solder connection	011289



SUPCO PRESSURE SWITCHES

- + automatic reset
- + 1/4" female SAE mounting
- + 24V, 120V, 240Vac, 50/60Hz

Description	Opening Pressure	Closing Pressure	Opening Conditions	Part No.
SUPCO HIGH PRESSURE SWITCH	375 psi	265 psi	Pressure rise	SHP375265
SUPCO LOW PRESSURE SWITCH	5 psi	20 psi	Pressure fall	SLP0520



DANFOSS KP PRESSURE SWITCH

With flare connections (solder available on request). SPDT contact function (+SPST for 060-115466/060-539766).

Description	Range	Part No.
PRESSURE SWITCH KP-1 LP AUTO RE-SET	0.2 to 7.5 bar	060-110166
PRESSURE SWITCH KP-1 LP MANUAL	0.9 to 7.0 bar	060-110366
PRESSURE SWITCH KP-5 HP AUTO RE-SET	8.0 to 32 bar	060-117166
PRESSURE SWITCH KP-5 HP MANUAL	8.0 to 32 bar	060-117366
PRESSURE SWITCH KP-15 DUAL LP/HP AUTO/AUTO	-0.2 to 7.5/8.0 to 32 bar	060-124166
PRESSURE SWITCH KP-15 DUAL LP/HP CONVERTIBLE	-0.2 to 7.5/8.0 to 32 bar	060-115466
PRESSURE SWITCH KP-17WB DUAL LP/HP CONVERTIBLE	-0.2 to 7.5/8.0 to 32 bar	060-539766
ANGLE BRACKET FOR KP AND MP PRESSURE CONTROLS		060-105666



RANCO AUTOMATIC PRESSURE SWITCHES

- + With 1/4" male flare connections.
- + SPDT contact function
- + Manual versions available on request

Description	Range	Part No.
PRESSURE SWITCH H/P AUTO	7 to 27 bar	016-H6750
PRESSURE SWITCH DUAL LP/HP AUTO/AUTO	0.3 to 7/7 to 30 bar	017-H4701



PRESSURE COUPLERS

Description	Part No.
PRESSURE COUPLER 1/4" SAE 500mm	603050
PRESSURE COUPLER 1/4" SAE 1000mm	603051
PRESSURE COUPLER 1/4" SAE 1500mm	603052
PRESSURE COUPLER WITH VALVE RELEASE PIN 1/4" SAE 500mm	603053
PRESSURE COUPLER WITH VALVE RELEASE PIN 1/4" SAE 1000mm	603054
PRESSURE COUPLER WITH VALVE RELEASE PIN 1/4" SAE 1500mm	603055



DEFROST TIMER

Programmable 24h timer with central dial to set minimum switching times of 15 minutes. Defrost 1-12 times per 24 hours. Adjustable defrost time from 2-50 minutes. 16(8)A 250V contact rating. 230V 50Hz electrics.

Description	Part No.
DEFROST TIMER 230V	124020



SUPCO MINI DEFROST TIMERS

Energy efficient defrost timer with two dial adjustment configuration for the setting any defrost frequency from 4 to 12 hours and any defrost time from 10 to 35 minutes. 230V 50Hz electrics.

Description	Load Rating	Compressor Size	Part No.
EDT20 DEFROST TIMER	5A	1/3hp	EDT20
EDT21 DEFROST TIMER	20A	3/4hp	EDT21
UET240 DEFROST TIMER	5A	1/2hp	UET240



SUPCO DELAY TIMER

Adjustable delay on make timer for HVAC and Refrigeration compressor staging. Delay adjustable from 6 seconds to 8 minutes. Input voltage 19-250V AC/DC. 1/4" male quick connect terminals.

Description	Part No.
DELAY ON MAKE TIMER 6SEC TO 8MIN	TD-69



HIGH POWER RELAY

- + 30A switching capability for heavy loads up to 7500VA
- + 2.5kV dielectric strength
- + 230V AC coil

Description	Part No.
HF105F-4 MINIATURE HP RELAY	700-205



FINDER HIGH POWER RELAY

- + 30A switching capability for heavy loads up to 7500VA
- + 230V AC coil

Description	Part No.
FINDER 30A POWER RELAY DPST-NO	66.82.8.230.0300



AEG CONTACTORS

Coil 230V 50Hz.

Description	Contacts		Part No.
	Main	Auxiliary (AC3 at 400V 9A 4kW)	
AEG CONTACTOR 4kW	3 Normally Open	1 Normally Closed	LS0501-50
AEG CONTACTOR 4kW	3 Normally Open	1 Normally Open	LS0510-50
AEG CONTACTOR 4kW	3 Normally Open	1 Normally Closed 10A	LS4K01-50
AEG CONTACTOR 4kW	3 Normally Open	1 Normally Open 10A	LS4K10-50



DANFOSS CONTACTORS

Coil 220-240V 50Hz.

Description	Contacts (AC3 at 220-240V /380-690V)	Part No.
CONTACTOR 220-240V 9A	4 NO 9A	C19-4POLE
CONTACTOR 220-240V 12A	4 NO 12A	C112-4POLE
CONTACTOR 24V 16A	3 NO 16A	C116-3POLE
CONTACTOR 220-240V 16A	3 NO 20A	C120-3POLE
CONTACTOR 220-240V 25A	3 NO 25A	C125-3POLE
CONTACTOR 220-240V 32A	3 NO 32A	C132-3POLE



ISOLATOR SWITCHES

Rotary action switch in IP65 enclosure.

Description	Dimensions	Part No.
ROTARY ISOLATOR SWITCH 3 POLE 20A	H 175mm x W 114mm x D 135mm	IS-3P-20A
ROTARY ISOLATOR SWITCH 3 POLE 32A	H 175mm x W 114mm x D 135mm	IS-3P-32A
ROTARY ISOLATOR SWITCH 3 POLE 40A	H 175mm x W 114mm x D 135mm	IS-3P-40A
ROTARY ISOLATOR SWITCH 4 POLE 20A	H 175mm x W 114mm x D 135mm	IS-4P-20A
ROTARY ISOLATOR SWITCH 4 POLE 32A	H 175mm x W 114mm x D 135mm	IS-4P-32A
ROTARY ISOLATOR SWITCH 4 POLE 40A	H 175mm x W 114mm x D 135mm	IS-4P-40A
ROTARY ISOLATOR SWITCH 8 POLE 32A	H 120mm x W 85mm x D 135mm	121040



PANEL MOUNTED ISOLATOR SWITCHES

Rotary action switches for panel mounting. IP65 rated.

Description	Part No.
PANEL MOUNTED ISOLATOR SWITCH 3 POLE 20A	121050
PANEL MOUNTED ISOLATOR SWITCH 6 POLE 32A	121051



TWO POLE ROCKER SWITCHES

16(4)A 250V - maximum temperature 120°C. With indicator lamp and silk screen printing O - I. Mounting size 22x30 mm.

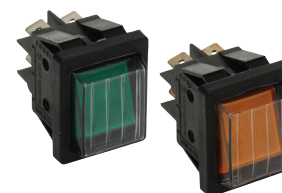
Description	Part No.
GREEN TWO POLE SWITCH	121010
AMBER TWO POLE SWITCH	121013
RED TWO POLE SWITCH	121012



TWO POLE ROCKER SWITCHES WITH PROTECTIVE COVER

16(4)A 250V - maximum temperature 120°C. Mounting size 22x30 mm.

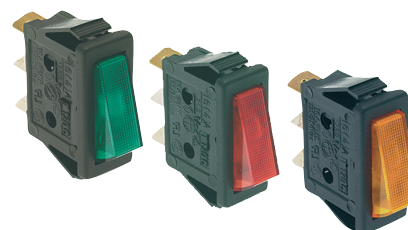
Description	Part No.
GREEN TWO POLE SWITCH WITH COVER	121008
AMBER TWO POLE SWITCH WITH COVER	121009



ONE POLE ROCKER SWITCHES

16(4)A 250V - maximum temperature 120°C. Mounting size 11x30 mm.

Description	Part No.
GREEN ONE POLE SWITCH	121017
RED ONE POLE SWITCH	121018
AMBER ONE POLE SWITCH	121019



COLDROOM LIGHT SWITCH

IP66 rated 10A switch.

Description	Part No.
COLDROOM LIGHT SWITCH 10A IP66	121045



HORIZONTAL PPS H FLOAT SWITCH

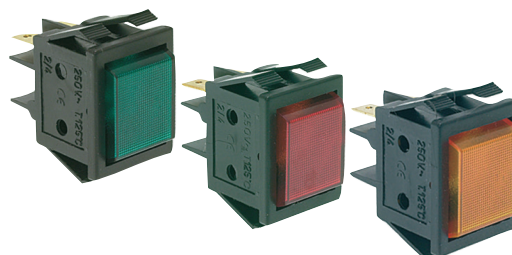
Suitable for signal switching and for use with transistorised input/low power, suppressed coil miniature relays (available on page 18). 250V 0.6A at temperatures up to +120°C. Internal mounting fitted in a 16.5mm dia hole in the tank from the inside, and secured by a nylon nut on the outside. Thread size M16x2x19. Supplied with 1000mm long lead.



Description	Part No.
HORIZONTAL FLOAT SWITCH 250V 0.6A	121032

RECTANGULAR INDICATING LAMPS

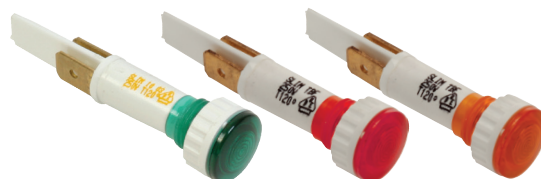
Maximum temperature 125°C. Mounting size 22x30 mm.



Description	Part No.
GREEN INDICATING LAMP	101201
RED INDICATING LAMP	101202
AMBER INDICATING LAMP	101203

ROUND INDICATING LAMPS

13.5mm diameter to fit 10mm diameter hole.



Description	Part No.
GREEN INDICATING LAMP	101211
RED INDICATING LAMP	101212
AMBER INDICATING LAMP	101213

LED COLDROOM LIGHT

- + IP65 rated LED Bulkhead Light
- + 640 Lumens
- + 8W 230Vac
- + Dimensions: 105 X 125 x 245mm



Description	Part No.
100W BULKHEAD LIGHT	101400

PYGMY LAMP

Description	Part No.
15W 240V PYGMY LAMP	101159



FLUORESCENT LIGHT STARTER/BALLAST

Description	Part No.
STANDARD 2 PIN STARTER 4-80W	101145
14W-24W T5 LIGHTING BALLAST	101166



PRODIGY F2000 THERMOSTAT

An electromechanical thermostat suitable for bottle coolers, coldrooms and air conditioning.

- + 400V
- + 16(4)A
- + SPDT

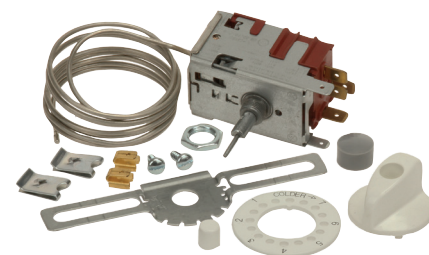


Description	Part No.
PRODIGY F2000 THERMOSTAT -35 - 35°C	123000

DANFOSS SERVICE THERMOSTAT KITS

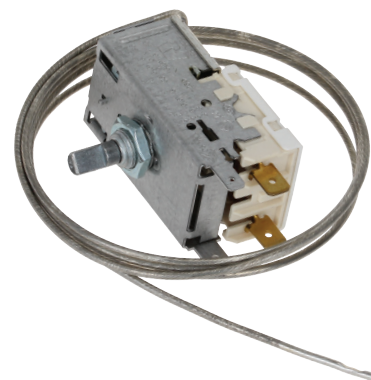
Electro mechanical service thermostats that have a wider regulating range than standard thermostats.

Description	Equipment Type	Cut-in	Cut-out	Capillary	Part No.
No1 THERMOSTAT KIT	Refrigerators	+2 to -13°C	-5.5 to -25°C	1.3m	077B-7001
No2 THERMOSTAT KIT (with push button defrost)	Refrigerators	0 to -11°C	-7.5 to -21°C	1.3m	077B-7002
No3 THERMOSTAT KIT (with auto defrost)	Refrigerators	+3.5°C	-11 to -27.5°C	1.6m	077B-7003
No4 THERMOSTAT KIT	Absorption Refrigerators	+3.5 to -5°C	-1 to -11°C	1.5m	077B-7004
No5 THERMOSTAT KIT (without signal)	Ice Cream Cabinets/ Freezers	-7.5 to -21°C	-15 to -32.5°C	2.3m	077B-7005
No6 THERMOSTAT KIT (with active signal)	Freezers	-10 to -24°C	-17 to -34.5°C	2.3m	077B-7006
No7 THERMOSTAT KIT (passive active signal)	Freezers	-10 to -24°C	-17 to -34.5°C	2.3m	077B-7007
No8 THERMOSTAT KIT	Bottle & liquid coolers	+11.5 to -1°C	+6 to -8.5°C	2m	077B-7008



RANCO VARIFIX THERMOSTAT KITS

Description	Equipment Type	Cut-in	Cut-out	Capillary	Part No.
VC-1 THERMOSTAT KIT	Compressor Refrigerator	+2 to -14.5°C	-23°C	1.2m	K50-P1110
VA-2 THERMOSTAT KIT	Absorption Refrigerator	+3.5 to -14.5°C	-18°C	2m	K50-P1174
VF-3 THERMOSTAT KIT	Ice Cream Cabinet/Freezer	-12°C	-16.5 to -34°C	2m	K50-P1117
VP-4 THERMOSTAT KIT with push button defrost	Refrigerator	-4°C	-10.4 to -25°C	1.2m	K60-P1013
VS-5 THERMOSTAT KIT with standard signal	Freezer	-12°C	-16.5 to -34°C	2m	K54-P1102
VR-6 THERMOSTAT KIT with reverse signal	Freezer	-12°C	-16.5 to -34°C	2m	K54-P3100
VB-7 THERMOSTAT KIT	Bottle & beverage coolers	+2 to +12.5°C	-3°C	1.2m	K50-P1118



CAREL EASYCOOL/EASYFREEZE

Fast and simple installation with all the parameters needed to start the unit pre-programmed and ready to be used. Fits mounting hole 71 x 29mm. 230V 50Hz electrical supply. IP65 rated.

Description	Pre-set Temp.	Relay Outputs	Probes supplied	SINGLE PART		5 PACK	
				Part No.		Part No.	
CAREL EASYCOOL	+3°C	1 x 16A	1 x NTC	EASYCOOL		EASYCOOL-5	
CAREL EASYFREEZE	-18°C	1 x 16A, 2 x 8A	2 x NTC	EASYFREEZE		EASYFREEZE-5	



CAREL MASTERCELLA CONTROLLERS

Integrated solution for static or ventilated coldrooms, freezer rooms, seasoning rooms, small refrigerated warehouses. Directly manages single-phase units with up to 2 Hp compressor relay. Also manages smart defrosts, consequently ensuring energy savings in the system as a whole. Alarm signals for high & low temperature, probe failure, external open door, antifreeze, HACCP, with all times recorded by the real time clock and guaranteed data storage for 10 years, even in the event of a power failure. Model available with safety door interlock already fixed in the box. IP65 rated for use in humid environments. 230V electrical supply.



Description	Relay Outputs	Probes (not supplied)	Part No.
CAREL MASTERCELLA	1 x 30A, 2 x 16A, 2 x 8A	up to 5 NTC/PTC	MD33D2EN00
CAREL MASTERCELLA WITH INTERLOCK	1 x 30A, 2 x 16A, 2 x 8A	up to 5 NTC/PTC	MD33D5FB00

ELIWELL COOL/CHILLNFREEZE

Simple solution controllers that work straight out of the box as each controller is pre-programmed for its application. Pre-set temperature is easily and quickly adjustable. Compatible with PTC and NTC controllers. Fits mounting hole 71 x 29mm. 230V 50Hz electrical supply.

Description	Pre-set Temp.	Relay Outputs	Probes supplied	SINGLE PART	10 PACK
				Part No.	Part No.
ID COOL CONTROLLER	+3°C (Range: +3 to +15°C)	Compressor (12A)	1 x NTC	IDCOOL	IDCOOL-10
ID CHILL N FREEZE CONTROLLER	-15°C (Range: -15 to +3°C)	Compressor (12A)/ Defrost (8A)/Fan (5A)	2 x NTC	IDCHILLNFREEZE	IDCHILLNFREEZE-10



ELIWELL ID PLUS CONTROLLERS

Supplied for use with PTC probes (not supplied) but parameters can be modified to work with NTC probes. Dimensions 74mm x 32mm for cut-out 71 x 29mm.

Description	Pre-set Temp.	Relay Outputs	Probes (not supplied)	12V	230V
				Part No.	Part No.
IDPLUS961 CONTROLLER	-50°C (Range: -50 to +99°C)	Compressor (2Hp)	1 x NTC/PTC/PT1000 (selectable)	IDPLUS961-12V	IDPLUS961-230V
IDPLUS971 CONTROLLER	-50°C (Range: -50 to +99°C)	Compressor (15A)/ Defrost (8A)	2 x NTC/PTC/PT1000 (selectable)	IDPLUS971-12V	IDPLUS971-230V
IDPLUS974 CONTROLLER	-50°C (Range: -50 to +99°C)	Compressor (12A)/ Defrost (8A)/Fan (5A)	2 x NTC/PTC/PT1000 (selectable)	IDPLUS974-12V	IDPLUS974-230V



ELIWELL EWRC 500 NT CONTROLLER

Complete management of static or ventilated positive and negative temperature cold rooms with 5 configurable outputs. Single-phase compressors up to 2HP. Capable of managing a double evaporator and condenser fans. Highly configurable, with internal DIN Rail to allow fitting of larger relays. Contained in a flame retardant, water resistant box with IP65 protection rating. 230V 11VA electrical supply. Dimensions: 213 x 318 x 102mm.

Description	Relay Outputs	Probes (not supplied)	Digital Input	Part No.
EWRC 500 NT CONTROLLER	12(12)A 2HP 250V~ SPST (compressor) 8(8)A 1HP 250V~ SPST (defrost) 8(4)A 1/2HP 250V~ SPST (fans) 8(8)A 1HP 250V~ SPST (light) 8(4)A 1/2HP 250V~ SPDT (alarm/auxiliary)	3 NTC/PTC	up to 2 voltage free configurables	PELX485



DIXELL X-COOL/X-FREEZE CONTROLLERS

Low cost 230V pre-programmed controllers from Dixell for refrigeration and freezer applications. Come complete with probes.

Description	Pre-set Temperature	Relay Outputs	Probes	Part No.
X-Cool Controller	+3°C (Range: -40°C to +99°C)	1 x 20A	1 x NTC	X-COOL
X-Freeze Controller	-18°C (Range: -40°C to +99°C)	1 x 20A	1 x NTC/PTC	X-FREEZE



DIXELL UNIVERSAL J CONTROLLER

Replaces all common 32 x 74mm controllers (Fits mounting hole 71 x 29mm) that operate as thermostats (cooling or heating) or as refrigeration controller with off-cycle defrost. Compatible with PTC and NTC probe and supplied with 1 NTC probe. 12V electrical supply.



Description	Temperature Range	Relay Outputs	Probes	Part No.
UNIVERSAL J CONTROLLER	-50°C to +150°C	1 x 20A	1 x NTC/PTC	UNIVERSAL-J

DIXELL UNIVERSAL R CONTROLLER

Replaces all common 32 x 74mm controllers (Fits mounting hole 71 x 29mm) that operate as thermostats (cooling or heating) or as refrigeration controller with off-cycle defrost, combined multi-function refrigeration & defrost controllers, dead-band controllers. Unique SMART parameters and hot key programming make it simple to program. Automatic recognition for PTC or NTC probes and supplied with 2 NTC probes. Configurable digital input, 4th relay and alarm buzzer. 230V electrical supply.



Description	Temperature Range	Relay Outputs	Probes	Part No.
UNIVERSAL R CONTROLLER	-50°C to +150°C	3 x 8A, 1 X 7A	2x NTC probes	UNIVERSAL-R

DIGITAL THERMOMETERS

LCD display digital thermometers for temperature measurement. Quick snap-fit panel mounting for 46 x 26.6mm cut-outs. Single input with probe on 1.5m lead supplied. Supplied with 1.5V LR44-type battery. Overall dimensions 48 x 28.6 x 16mm.



Description	Part No.
BLACK CASE LCD DIGITAL THERMOMETER -50 to +80°C	TPM-10F
WHITE CASE LCD DIGITAL THERMOMETER -50 to +80°C	EWTL300

CAREL TEMPERATURE PROBES

Range of accurate NTC and PT1000 probes in a choice of materials and in various lengths for temperature measurement duties in a range of different cold storage applications.



Description	Housing	Rating	Ohms	Temperature range	Part No.
NTC TEMPERATURE PROBE Ø6X15MM 1500MM	Polyolefin	IP67	10k @ 25°C	-50 to 105 °C	NTC015HP00
NTC TEMPERATURE PROBE Ø6X15MM 3000MM	Polyolefin	IP67	10k @ 25°C	-50 to 105 °C	NTC030HP00
NTC TEMPERATURE PROBE Ø6X15MM 6000MM	Polyolefin	IP67	10k @ 25°C	-50 to 105 °C	NTC060HP00
NTC TEMPERATURE PROBE Ø6X52MM 1500MM	stainless steel	IP68	10k @ 25°C	-50 to 105 °C	NTC015WP00
NTC TEMPERATURE PROBE Ø6X52MM 3000MM	stainless steel	IP68	10k @ 25°C	-50 to 105 °C	NTC030WP00
NTC TEMPERATURE PROBE Ø6X52MM 6000MM	stainless steel	IP68	10k @ 25°C	-50 to 105 °C	NTC060WP00
PT1000 TEMPERATURE PROBE Ø6X20MM 3000MM	rubber	IP67		-50 to 105 °C	PT1030HF01
PT1000 TEMPERATURE PROBE Ø6X15MM 6000MM	Polyolefin	IP67		-50 to 105 °C	PT1060HP01

PTC TEMPERATURE PROBES

PVC insulated 2-wire probes. Temperature range -30+80°C. Bulb ø 6 x 40mm.



Description	Housing	Temperature range	Part No.
PTC TEMPERATURE PROBE Ø6X40MM 1500MM	stainless steel	-30 to 80°C	3445070
PTC TEMPERATURE PROBE Ø6X40MM 3000MM	stainless steel	-30 to 80°C	3445107

CONTROL TRANSFORMERS

Room temperature 0-60°C. Screw terminal block. IMQ approved.

Description	Primary	Output	Part No.
TRANSFORMER 153/M	230Vac 50/60Hz	12V 3VA	114001
TRANSFORMER 157/M TF1111112	220Vac 50/60Hz	12V 5VA	114002
TRANSFORMER 153/M TF111115	24Vac 50/60Hz	12V 3.5VA	114003



START CAPACITORS

Description	Part No.
START CAPACITOR 51-68MF 275V/50HZ	040330
START CAPACITOR 64-78MF 275V/50HZ	040331
START CAPACITOR 80-100MF 275V/50HZ	040332
START CAPACITOR 100-130MF 275V/50HZ	040339
START CAPACITOR 130-156MF 275V/50HZ	040334



RUN CAPACITORS

Description	Part No.
RUN CAPACITOR 1.5MF 440V/50HZ	040326
RUN CAPACITOR 2MF 440V/50HZ	040327
RUN CAPACITOR 3MF 440V/50HZ	040328
RUN CAPACITOR 5MF 440V/50HZ	040335
RUN CAPACITOR 10MF 440V/50HZ	040336
RUN CAPACITOR 15MF 440V/50HZ	040337
RUN CAPACITOR 25MF 440V/50HZ	040342
RUN CAPACITOR 35MF 440V/50HZ	040344
RUN CAPACITOR 40MF 440V/50HZ	040345



CAPACITORS WITH LEADS

Description	Part No.
CAPACITOR 2MF 420/470V	107050
CAPACITOR 3MF 420/470V	107051
CAPACITOR 4MF 420/470V	107052
CAPACITOR 5MF 420/470V	107053
CAPACITOR 6MF 420/470V	107054
CAPACITOR 8MF 420/470V	107055



UNIVERSAL RING FAN

Pre-assembled assembly of fan motor and fan fitted to a mounting ring.

Description	Part No.
UNIVERSAL RING FAN 5W 230V 50HZ 154MM	EMFR-4-5-154-34
UNIVERSAL RING FAN 5W 230V 50HZ 172MM	EMFR-4-5-172-34
UNIVERSAL RING FAN 10W 230V 50HZ 200MM	EMFR-4-10-200-34
UNIVERSAL RING FAN 10W 230V 50HZ 230MM	EMFR-4-10-230-34
UNIVERSAL RING FAN 18W 230V 50HZ 254MM	EMFR-4-18-254-28
UNIVERSAL RING FAN 25W 230V 50HZ 300MM	EMFR-4-25-300-28



PHF MULTIFIT FAN MOTORS

The PHF universal, multi-fit fan motors are ideal for replacement in nearly all industrial and commercial refrigeration and ventilation equipment. The motor has a short drive shaft which may be advantageous when mounting on cages and ring mounting. Fitted with 1 metre power cord for greater flexibility of installation and 3 mounting options - 3 tapped holes for front / rear mounting, adjustable bolt-plate for base / top mounting on brackets and 4 corner bolts for ring mounting. CE certified / ROHS compliant

Description	Part No.
PHF 5 WATT MULTIFIT FAN MOTOR	FM-5W
PHF 7 WATT MULTIFIT FAN MOTOR	FM-7W
PHF 10 WATT MULTIFIT FAN MOTOR	FM-10W
PHF 16 WATT MULTIFIT FAN MOTOR	FM-16W
PHF 25 WATT MULTIFIT FAN MOTOR	FM-25W
PHF 34 WATT MULTIFIT FAN MOTOR	FM-34W



MULTIFIT TYPE N FAN MOTORS

Shaded pole motors with insulation class B and up to IP44 protection. Self lubricating and self aligning bearings. Suitable for horizontal or vertical mounting - motors can be fixed using the protruding screws for ring or grid, by the 3 threaded holes on back shield, or using the bottom screws. For use in ambient temperatures between -40°C to +40°C and fitted with a 500mm lead. Drive shaft fitted with white four pin fan hub suitable for standard fan blades.

Description	SINGLE PART		10 PACK	
	Part No.		Part No.	
ELCO 5 WATT MULTIFIT FAN MOTOR	5WMULTIFIT		5WMULTIFIT-10	
ELCO 7 WATT MULTIFIT FAN MOTOR	7WMULTIFIT		-	
ELCO 10 WATT MULTIFIT FAN MOTOR	10WMULTIFIT		10WMULTIFIT-10	
ELCO 16 WATT MULTIFIT FAN MOTOR	16WMULTIFIT		16WMULTIFIT-10	
ELCO 18 WATT MULTIFIT FAN MOTOR	18WMULTIFIT		18WMULTIFIT-10	
ELCO 25 WATT MULTIFIT FAN MOTOR	25WMULTIFIT		25WMULTIFIT-10	
ELCO 34 WATT MULTIFIT FAN MOTOR	34WMULTIFIT		-	



ECM HIGH EFFICIENCY FAN MOTORS

Energy efficient ECM electronically commuted motors are far more efficient than the conventional shaded pole motor and provide the same output performance with input power reductions of up to 70%. This saves energy and reduces CO² emissions. These plastic housing motors have ball bearing sleeve to extend the life and provide quiet operation. Motor has over current, over and under voltage protection. They run cool, are IP65 rated and will directly replace a standard multi-fit refrigeration motor. Fitted with white four pin fan hub suitable for fan blades ranging from 154mm up to 300mm diameter (see chart below).

Description	Cable length	Part No.
ECM HIGH EFFICIENCY FAN MOTOR 2.5-7.5W 230V 50/60HZ	450mm	FM-ECM-7108
ECM HIGH EFFICIENCY FAN MOTOR 2.5-23.5W 230V 50/60HZ	450mm	FM-ECM-7112



ELCO ECM HIGH EFFICIENCY FAN MOTORS

The Elco IP65 Standard ECM motors come with an O-ring to seal the rear plastic end-shield to the motor housing and a moulded cable grommet. They have a special, permanent lubrication system that gives motors a life expectancy of approximately 30,000 hours. The thermoplastic motor housing reduces radiated heat to generate further energy savings. 4 mounting studs allow these motors to directly replace multifit motors on mounting rings. An adaptor is available for mounting the motor on brackets.

Description	Part No.
ELCO ECM FAN MOTOR 14WIN 230V 50/60HZ CONNECTION PLUG	EBA12150NC0030
ELCO ECM FAN MOTOR 14WIN 230V 50/60HZ CRIMPED CABLE ENDS	EBA12150VN0085



MOTOR MOUNTING BRACKETS

Description	Slot Centres	Part No.
MOTOR MOUNTING BRACKET H 39MM	81mm	111048
MOTOR MOUNTING BRACKET H 52MM	81mm	111049
MOTOR MOUNTING BRACKET H 72MM	81mm	111050
MOTOR MOUNTING BRACKET H 84MM	81mm	111051
MOTOR MOUNTING BRACKET H 109MM	78mm	111052



ALUMINIUM FAN BLADES

Description	Part No.
PRESSURE FAN BLADE 154MM (6") 28°	111060
PRESSURE FAN BLADE 172MM (7") 28°	111061
PRESSURE FAN BLADE 200MM (8") 28°	111062
PRESSURE FAN BLADE 230MM (9") 28°	111063
PRESSURE FAN BLADE 254MM (10") 28°	111064
PRESSURE FAN BLADE 300MM (12") 28°	111065
SUCTION FAN BLADE 154MM (6") 28°	111066
SUCTION FAN BLADE 172MM (7") 28°	111067
SUCTION FAN BLADE 200MM (8") 28°	111068
SUCTION FAN BLADE 230MM (9") 28°	111069
SUCTION FAN BLADE 254MM (10") 28°	111070
SUCTION FAN BLADE 300MM (12") 28°	111071



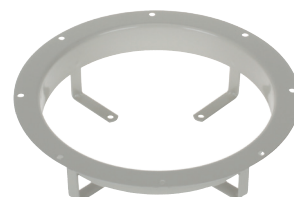
ELCO FAN BLADES

Description	Part No.
SUCTION FAN BLADE 154MM (6") 22°	4012004
SUCTION FAN BLADE 200MM (8") 31°	4012011
SUCTION FAN BLADE 254MM (10") 31°	4012016



FAN MOUNTING RINGS

Description	Part No.
FAN MOUNTING RING 154MM	3240408
FAN MOUNTING RING 172MM	3240969
FAN MOUNTING RING 200MM	3240970
FAN MOUNTING RING 230MM	3240409



TANGENTIAL FANS

Description	Part No.
120X60MM TANGENTIAL FAN 25W 230V 50HZ RH MOTOR	111040
120X60MM TANGENTIAL FAN 25W 230V 50HZ LH MOTOR	111041
240X60MM TANGENTIAL FAN 25W 230V 50HZ RH MOTOR	111042
240X60MM TANGENTIAL FAN 25W 230V 50HZ LH MOTOR	111043
300X60MM TANGENTIAL FAN 26W 230V 50HZ RH MOTOR	111044
300X60MM TANGENTIAL FAN 26W 230V 50HZ LH MOTOR	111045



UNIVERSAL AXIAL FANS

Axial mini shaded fan motors manufactured in reinforced plastic so are light weight and low noise. Suitable for use at ambient operating temperature of -20°C to +60°C on refrigeration equipment, bottle coolers, vending machines and other ventilating and cooling equipment. Three models are fitted with a trailing lead, but model FM-A-12038-T has a terminal block.

Description	Air flow	Part No.
80X80X38MM AXIAL FAN (WITH CABLE) 15W	40m³/h	FM-A-8038-L
120X120X25MM AXIAL FAN (WITH CABLE) 13W	71m³/h	FM-A-12025-L
120X120X38MM AXIAL FAN (WITH CABLE) 20W	132m³/h	FM-A-12038-L
120X120X38MM AXIAL FAN (TERMINAL) 20W	132m³/h	FM-A-12038-T



CABLE FOR AXIAL FANS

600mm cable with plug for axial fans with terminals.

Description	Part No.
600M CABLE FOR AXIAL FANS	LZ120



CONDENSATE/EVAPORATOR TRAYS

Fitted with 450mm power cord and supplied with spring feet which must be used for heat to dissipate adequately.

Description	Capacity	Rate	Dimensions	Part No.
CONDENSATE/EVAPORATOR TRAY 160W	1.5l	118ml/hour	120x317x70mm	606001
CONDENSATE/EVAPORATOR TRAY 225W	1.5l	157ml/hour	120x317x70mm	606002
CONDENSATE/EVAPORATOR TRAY 300W	1.5l	280ml/hour	120x317x70mm	606003



CONDENSATE/EVAPORATOR TRAYS

Description	Capacity	Rate	Dimensions	Part No.
CONDENSATE EVAPORATOR PAN 800W	2.36l	1.14l/hour	330x178x63.5mm	CP802-240
CONDENSATE EVAPORATOR PAN 1000W	4.26l	1.89l/hour	330x178x102mm	CP804-240
CONDENSATE EVAPORATOR PAN 1000W	7.1l	1.52l/hour	330x178x102mm	CP807-240
CONDENSATE EVAPORATOR PAN 1500W	14.2l	2.27l/hour	533x330x102mm	CP815-240



ASPEN MAX HI FLOW PUMP

Replacement to the Hi Flow Pump. Designed to collect condensate water from refrigeration and air-conditioning units. Proven reliability and performance. Easy to install and maintain. Automatic operation with a float system and level safety switch. Plug in 2 metre cable.

- + Tank capacity: 1.7L
- + Pump rating: 75W, 0.8A, 230VAC, 50Hz
- + Maximum flow 550l/h @ 0 head
- + Maximum recommended head 5m (flow rate 10l/h)
- + Maximum water temperature 40°C
- + Suitable for units up to 733kW/2.5m Btu/h
- + Safety switch 3.0A normally close
- + 4 x 21-27mm inlet and 6mm & 10mm outlets
- + Built-in spirit level
- + Dimensions - h 134mm x w 144mm x d 285mm

Description	Part No.
MAX HI FLOW PUMP	FP3349



ASPEN SILENT+ MINI LIME PUMP

The Silent+ Mini Lime pump includes a high performance motor as well as an acoustic damper and anti-vibration tubing. The pump is clipped directly onto the reservoir so there is minimal suction lift.

- + Pump rating: 16W, 0.1A, 230VAC, 50/60Hz
- + Maximum flow: 12l/h @ 0m head
- + Maximum recommended head: 10m
- + Maximum water temperature: 40°C
- + Noise level: 21dB(A) @ 1 metre
- + 3A volt-free alarm wires, NO NC contacts rated at 5A inductive load at 230V
- + Hall effect semi conductor level sensors with high safety level
- + Outlet size: 6mm
- + Dimensions: h 79mm x w 99mm x d 44mm

Description	Part No.
SILENT+ MINI LIME PUMP	FP3322



ASPEN MINI ORANGE PUMP

The Mini Orange pump is designed to be installed above a false ceiling, behind wall mounted evaporators or in plastic conduit. Within the Orange kit there are two reservoirs to choose from, which must sit flat and horizontal. One allows you to connect directly to the drain hose of the evaporator and the second reservoir can be placed directly into a condensate tray.

- + Pump rating: 16W, 0.11A, 230V, 50/60Hz
- + Maximum flow: 12L/h @ 0m head
- + Maximum recommended head: 10m
- + Maximum water temperature: 40°C
- + 3A volt-free alarm wires, NO NC contacts rated at 5A inductive load at 230V
- + Hall effect semi conductor level sensors with high safety level
- + Dimensions: h 51mm x w 107mm x d 39mm

Description	Part No.
ASPEN MINI ORANGE PUMP	FP2212

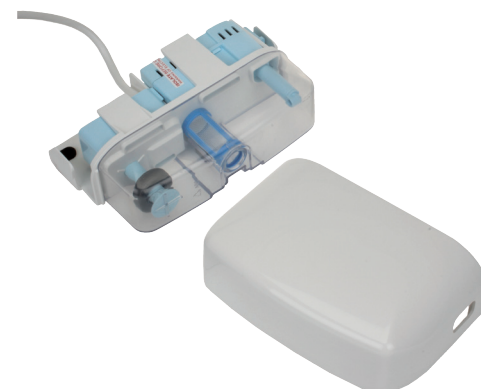


ASPEN MINI BLANC PUMP

An extremely easy to install mini pump for all wall and ceiling suspended indoor units. Ultra quiet in operation and with a slim profile of 55mm from the wall.

- + Tank capacity: 0.24L
- + Pump rating: 19W, 0.1A, 230V AC, 50Hz
- + Maximum flow: 12l/h @ 0 head
- + Maximum recommended head: 10m (flow rate 4l/h)
- + Maximum water temperature: 40°C
- + 3A volt-free alarm wires, NO, NC contacts rated @ 5A 230V
- + Noise level: 21dB(A) @ 1m
- + Hall effect semi conductor level sensors, with high level safety
- + 20mm inlet and 6mm outlets
- + Dimensions: h 115mm x w 182mm x d 55mm

Description	Part No.
ASPEN MINI BLANC PUMP	FP1080/2



ASPEN HI-LIFT PUMPS

Peristaltic tank pump with high head.

- + Thermally protected 230V motor and high level safety switch with 3A volt-free wires and normally closed contacts
- + Pump rating: 230 Vac, 0.4A, 50/60Hz
- + Maximum water temperature: 40°C
- + Noise level: 51dB(A) @ 1m
- + x3 25mm inlet and 6mm outlets

Description	Capacity	Max Lift	Rate	Dimensions	Part No
HI-LIFT 1L PUMP	1l	12m	11l/h	132x244x148mm	FP2099/2
HI-LIFT 2L PUMP	2l	12m	11l/h	164x244x148mm	FP2071/2



ASPEN ERRP RETAIL PUMP

Low height means they can be easily installed underneath a retail/supermarket refrigeration unit, where direct drainage is not available and water needs to be pumped up above the ceiling and away to a suitable drain. High capacity pumps permit the draining of several units together.

- + Thermally protected 230V motor and high level safety switch
- + Strainer to catch debris
- + 50mm inlet hole to lid or 50mm side inlet hole and 10mm outlet hose connection
- + Water temp: 0°C to 40°C

Description	Capacity	Max Lift	Rate	Dimensions	Part No
TOP INLET RETAIL PUMP	11l	35m	225l/h	100x590x405mm	FP2318
SIDE INLET RETAIL PUMP	11l	35m	225l/h	100x590x405mm	FP2320



ASPEN LOW PROFILE ERRP RETAIL PUMP

Lower profile and smaller foot print makes this pump ideal for installation under retail/supermarket refrigeration units where space is at a premium.

- + Thermally protected 230V motor and high level safety switch
- + Strainer to catch debris
- + 50mm inlet hole to lid or 50mm side inlet hole and 10mm outlet hose connection
- + Water temp: 0°C to 40°C

Description	Capacity	Max Lift	Rate	Dimensions	Part No
TOP INLET LOW PROFILE RETAIL PUMP	3.5l	21m	190l/h	75x530x240mm	FP2597
SIDE INLET LOW PROFILE RETAIL PUMP	3.5l	21m	190l/h	75x530x240mm	FP2805



ASPEN PERISTALTIC PUMP

A quiet and reliable solution for condensate removal. Suitable for remote install which can minimise future maintenance disruption. Pumps water, fibrously contaminated water and air with no siphoning back.

- + Pump rating: 0.2A, 230V, 50/60Hz
- + Maximum flow: 6.5l/h @ 12m head
- + Maximum recommended head: 12m
- + Maximum water temperature: 40°C
- + Inlet/outlet size: 6mm
- + Dimensions: h 115mm x w 135mm x d 77mm

Description	Operation Method	Part No.
ASPEN PERISTALTIC STANDARD PUMP	AC cooling signal	FP2081/2
ASPEN PERISTALTIC UNIVERSAL PUMP	Air temperature sensor	FP2082/2



LITTLE GIANT CENTRIFUGAL TANK PUMP

1 litre centrifugal tank pump. Supplied with both 3/8" & 1/4" check valves. Ideal for cassette and ducted air conditioners.

- + Pump rating: 75W, 0.6A, 230V, 50Hz
- + Maximum flow: 300L/h @ 0m head
- + Maximum recommended head: 4.3m
- + Maximum water temperature: 49°C
- + 1" and 1-1/8" inlets and 3/8" outlet (1/4" adapter included)
- + Dimensions: h 127mm x w 300mm x d 125mm

Description	Part No.
LITTLE GIANT 1 LITRE PUMP	VCC-20S



2L CONDENSATE PUMP

Centrifugal pump designed to remove condensate from air conditioners, refrigeration equipment and de-humidifiers. 1.9 litre tank capacity. 1/4" and 3/8" non-return valve outlet. 230V 60W 50Hz.

- + Pump rating: 60W, 0.6A, 230V, 50Hz
- + Maximum flow: 300L/h @ 0m head
- + Maximum recommended head: 4.8m
- + Dimensions: h 172mm x w 269mm x d 126mm

Description	Part No.
2 LITRE CONDENSATE PUMP	PH-2L



ECONOMY 2L CONDENSATE PUMP

High value, low cost centrifugal pump designed to remove condensate from air conditioners, refrigeration equipment and de-humidifiers. 1.9 litre tank capacity. Volt free high level alarm. 3/8" discharge size with check valve to prevent backflow.

- + Pump rating: 60W, 0.6A, 230V, 50Hz
- + Maximum flow: 275L/h @ 0m head
- + Maximum recommended head: 3.8m
- + Dimensions: h 172mm x w 269mm x d 126mm

Description	Part No.
ECONOMY CONDENSATE PUMP	PH-2LE



REINFORCED VINYL TUBE

Reinforced PVC hose is suitable for condensate drains and comes packaged in clear shrink wrap for protection and easy storage.

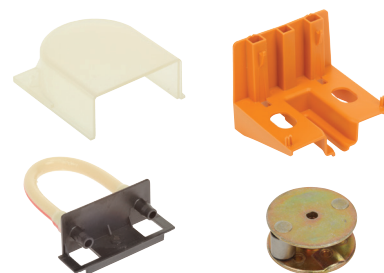
- + Min Temperature: -15°C
- + Max Temperature: +60°C
- + Min bend radius: 30°

Description	ID	OD	Working Pressure	Burst Pressure	Part No.
1/4" X 30M CLEAR TUBE	6mm	10mm	max 7 bar	21 bar	RVT-1/4
3/8" X 30M CLEAR TUBE	10mm	14mm	max 8 bar	24 bar	RVT-3/8
1/2" X 30M CLEAR TUBE	12mm	16mm	max 6 bar	18 bar	RVT-1/2



ASPEN PERISTALTIC PUMP SPARES

Description	Part No.
ASPEN PERISTALTIC FRONT HOUSING	1159
ASPEN PERISTALTIC ROTOR ASSEMBLY	SA1382
ASPEN PERISTALTIC PUMP BRACKET	1553/1
ASPEN PERISTALTIC PUMP TUBE	FP1282



DRAIN LINE HEATER CABLE

Supplied with 1000 mm cold leads.

Description	Part No.
DRAIN LINE HEATER CABLE 1000MM 40W	122003
DRAIN LINE HEATER CABLE 1500MM 60W	122004
DRAIN LINE HEATER CABLE 2000MM 80W	122005
DRAIN LINE HEATER CABLE 3000MM 120W	122006
DRAIN LINE HEATER CABLE 4000MM 160W	122007
DRAIN LINE HEATER CABLE 5000MM 200W	122008
DRAIN LINE HEATER CABLE 6000MM 240W	122011
DRAIN LINE HEATER CABLE 8000MM 320W	122014



HEATING TAPE & DRAIN LINE CABLE

Heater tapes are used widely for both drain lines and freezer doors. Self Limiting Tape is supplied per metre and is available as a base cable or with a braided outer cover for earth protection. Minimum bend radius 10 mm. Use of a 30mA residual current device is recommended to provide maximum safety.

Description	Part No.
SELF LIMITING HEATER TAPE 16W/M 230V	122009
SELF LIMITING HEATER TAPE 24W/M 230V	122010
SELF LIMITING BRAIDED HEATER TAPE 16W/M 230V	122012
HEATER TAPE TERMINATION KIT	122013



90° SOLENOID VALVES 230V 50HZ

Budget range of solenoid valves.

Description	Part No.
90° SINGLE SOLENOID VALVE 3/4" BSP X 10MM	117011
90° SINGLE SOLENOID VALVE 3/4" BSP X 14MM	117012
90° DOUBLE SOLENOID VALVE 3/4" BSP X 10MM	117013
90° DOUBLE SOLENOID VALVE 3/4" BSP X 14MM	117014
90° TRIPLE SOLENOID VALVE 3/4" BSP X 10MM	117015
90° TRIPLE SOLENOID VALVE 3/4" BSP X 13.5MM	117016



180° SOLENOID VALVES 230V 50HZ

Budget range of solenoid valves.

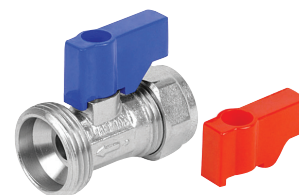
Description	Part No.
180° SINGLE SOLENOID VALVE 3/4" BSP X 10MM	117017
180° SINGLE SOLENOID VALVE 3/4" BSP X 14MM	117018
180° DOUBLE SOLENOID VALVE 3/4" BSP X 10MM	117019
180° DOUBLE SOLENOID VALVE 3/4" BSP X 14MM	117020
180° TRIPLE SOLENOID VALVE 3/4" BSP X 10MM	117021



WATER INLET TAP

Tap is supplied with a red and a blue lever for hot or cold water supplies.

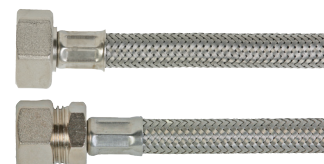
Description	Part No.
WATER INLET TAP 15MM X 3/4" BSP	403151



PEX TAP CONNECTION HOSES

WRAS approved hoses and stainless steel braiding for a water pressure up to 15 bar.

Description	Connection 1	Connection 2	Length	Bore	Part No
PEX S/S BRAIDED TAP CONNECTION HOSE	1/2" Female Straight	15mm Compression	300mm	13mm	402014
PEX S/S BRAIDED TAP CONNECTION HOSE	1/2" Female Straight	15mm Compression	500mm	13mm	402015



Industry Expertise



**Our friendly team are on hand
to help your parts identification needs**

 +44 (0) 1543 577 778  Live Chat

EVERPURE INSURICE WATER FILTER

Specifically designed for use with ice making machines the InsurIce System reduces chlorine, which is a major cause of bin and evaporator corrosion and has a scale inhibitor to reduce scale build-up. Pre-coat sub-micron technology reduces dirt and particles as small as 1/2 micron in size and reduces possible health contaminants such as cysts. Micro-Pure II media inhibits the growth of bacteria. The head incorporates an adjustable bypass and a pressure gauge to help determine when to replace filter cartridges.

- + Complete system comes with a filter head and i2000² filter cartridge/s
- + Choice of heads to hold one or two filter cartridges for increased flow rate and capacity
- + Single filter system with i2000² cartridge is suitable for ice cube makers up to 225 kg/day and flakers up to 775 kg/day
- + Twin filter system with i2000² cartridge is suitable for ice cube makers up to 658 kg/day and flakers up to 998 kg/day
- + Reduces water-related ice machine problems caused by scale build-up from dirt and dissolved minerals
- + 3/8" inlet/outlet water connections on single system
- + 3/4" inlet/outlet water connections on twin system
- + Maximum pressure 0.7-8.6 bar
- + Flow rate, single system 6.3 litres/min, twin system 12.6 litres/min
- + Water temperature 2 to 38°C
- + NSF/ANSI Standard 53 certified

Description	Rating	Capacity	Dimensions	Part No.
SINGLE I2000 ² SYSTEM COMPLETE	0.5 micron	34000l	610mm x 210mm x 133mm	9324-01
TWIN I2000 ² SYSTEM COMPLETE	0.5 micron	68137l	641mm x 421mm x 139mm	9324-02
REPLACEMENT EVERPURE I2000 ² FILTER	0.5 micron	34000l	530mm x Ø 80mm	9612-27
REPLACEMENT EVERPURE I4000 ² FILTER	0.5 micron	45000l	640mm x Ø 80mm	9612-37



EVERPURE 4C COLD WATER FILTER

Simple to use system of fixed head and disposable filter cartridges. The QL3B Filter Head is fitted with a shut-off valve for easy filter change and is supplied with a wall mounting bracket. 4C filter does not reduce scale so is suitable for soft water areas or cold water drinks machines only.

- + Complete system comes with a QL3B filter head and a filter cartridge
- + Activated carbon filter reduces chlorine taste and odour and other contaminants for improved taste of cold beverages
- + Reduces possible health contaminants such as asbestos fibres, Cryptosporidium and Giardia cysts but does not remove fluoride
- + 3/8" NPT inlet/outlet water connections
- + Maximum pressure 0.7-8.6 bar
- + Flow rate 1.91 litres/min
- + Maximum water temperature 35°C
- + NSF Certified under NSF/ANSI Standards 42 and 53

Description	Rating	Capacity	Dimensions	Part No.
EVERPURE 4C FILTER SYSTEM COMPLETE	0.5 micron	11355l	320mm x Ø 80mm	4260-31
REPLACEMENT EVERPURE 4C FILTER	0.5 micron	11355l	320mm x Ø 80mm	9601-00



MONARCH INLINE WATER FILTER

Compact inline water filter for the prevention of scale and the removal of chlorine, bad tastes and odours. Suitable for use with water coolers and ice machines.

- + 3/4" male bsp inlet/outlet water connections
- + Maximum pressure 100 psi
- + Recommended maximum flow rate 3 litres/min
- + Maximum water temperature 35°C

Description	Rating	Capacity	Dimensions	Part No.
CTO-S INLINE WATER FILTER	20 micron	6000l	300mm x Ø 55mm	CTO-S



3M WATER FILTER

Fixed head and replaceable filter cartridge system provides consistent high quality water for commercial ice, coffee, Beverage & vending machines

Description	Part No.
HF20-SE Filter Cartridge 656556	7100017185
AP2-C401-SG Filter Cartridge 47-915403	7000051326
AP3-C765-S-E Filter Cartridge 657772	7100017170
HF25-S Filter Cartridge 5615203	7000050414
AP2-C405-SG Filter Cartridge 47-915401	7000051324
HF60-S Filter Cartridge 5613405	7000001752
HF40-S Filter Cartridge 5613305	7100008238
P195BN-E Filter Cartridge 656251	7100016374
HF45-S Filter Cartridge 5613309	7000050884
P124BN-E Filter Cartridge 657777	7100017165
CFS9812X-S Filter Cartridge 5631609	7100048172
HF25-MS Filter Cartridge 5615209	7000001677
P195BH Filter Cartridge 657798	7100017178
Water Filter Cartridge Reverse Osmosis SGLP2 Dual	7100054813
AP055T Filtration System 5597514 (Whole House)	7100176006
SF18-S Filtration System 5607708	7100051040
CFS9812-X Filter Cartridge 5631608	7100046482
CS-24 Filter Cartridge 5631510	7100049843
HF90-CL Filter Cartridge 5613501	7000050411
HF DP290 Filter Cartpak 5613802	7000050525
HF DP390 Filter Cartpak 5613803	7000125646
HF65 Filter Cartridge 5613407	7100006231
P145BH Filter Cartridge 657800	7100017179



3M WATER FILTER HEAD

Fixed head and replaceable filter cartridge system provides consistent high quality water for commercial ice, coffee, Beverage & vending machines

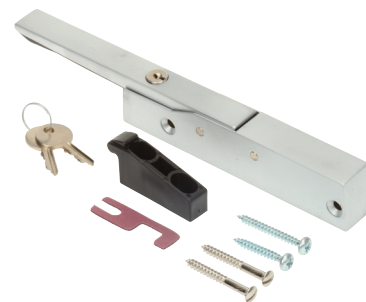
Description	Part No.
VH3-BSP Filter Head 6213013 (With Gauge)	4000012687
VH3-JG Filter Head 52-180016 (3/8" John Guest - A3 Key)	7000001815
BH3-BSP Filter Head 6240801 (3/8" John Guest)	7100075200
BH3-M-BSP Filter Head 6240815 (3/8" BSPT - A3 Key)	7100075184
Blend Range Filter Head BH3-BSP 6240813 (3/8" BSPT - A3 Key)	7100075188
560 Series Filter Head 6856704	7000001632



FERMOD 560/570/571 AUTOMATIC LATCH

Automatic latches for small doors and interchangeable for left or right hand doors. Chromium plated body.

Description	Handle Finish	Part No.
560 AUTOMATIC LATCH FOR SMALL DOORS	Black Rilsan	355001
570 AUTOMATIC LATCH FOR SMALL DOORS	Chromium Plated	355002
571 LOCKABLE AUTOMATIC FOR SMALL DOORS	Chromium Plated	355003



FERMOD 880/885 AUTOMATIC LATCH

Chromium plated body and handle. Interchangeable for left or right hand overlapping doors. 4 fixing holes for 5mm phillips screws. Dimensions 205 x 28 x 39mm. Weight 392g. CNERPAC hygiene certificate.

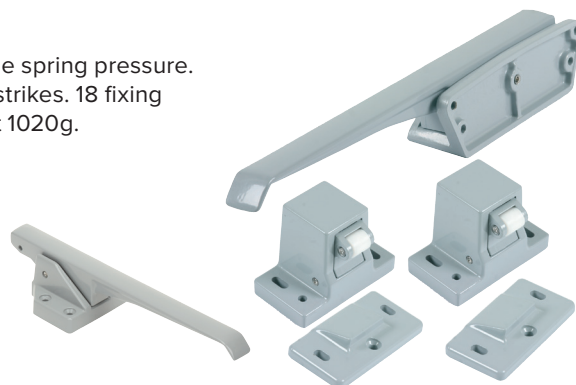
Description	Finish	Part No.
880 AUTO LATCH OVERLAPPING DOORS	Chromium Plated	010250
885 LOCKABLE AUTO LATCH OVERLAPPING DOORS	Chromium Plated	010269



FERMOD 1220/1221 AUTOMATIC FASTENERS

For overlapping doors up to 40kg. With 2 external fastening points. Adjustable spring pressure. Kit of grey enamelled finish handle (black also available) with 2 blocks and 2 strikes. 18 fixing holes for 6mm (12) and 5mm (6) screws. Dimensions 316 x 45 x 48mm. Weight 1020g.

Description	Finish	Part No.
1220/E FASTENER KIT - LH	Enamelled	355090
1220/E FASTENER KIT - RH	Enamelled	355091
1221/E LOCKABLE FASTENER KIT - RH	Enamelled	180181
217 BLOCK FOR 1220/1221 FASTENERS	Enamelled	180009
STRIKE FOR 1220/1221 FASTENERS	Enamelled	180114
2171 INTERNAL RELEASE FOR 1220/1221	Enamelled	030090



RAHRBACH JUMBO 6000 HANDLE

Self-closing handle for hinged doors. A zinc die-cast construction with chrome plated finish.

Description	Part No.
CHROME JUMBO 6000 HANDLE WITH LOCK	6000-020893
GREY ENAMELL JUMBO 6000 HANDLE WITH LOCK	6000-020894
STRIKE FOR JUMBO 6000 HANDLE WITH 26-35MM OFFSET	6000-020902
GREY ENAMELL STRIKE FOR JUMBO 6000 HANDLE WITH 26-35MM OFFSET	6000-020732



KASON 56 HD WALK-IN LATCH

For heavy duty commercial use. High pressure die-cast zinc body and strike housing, malleable iron handle with polished chromium plated finish and 316 grade stainless steel handle. Reliable, self-closing action with adjustable strike that provides positive air-tight closure.

Description	SPRING	Part No.
56 RADIAL WALK-IN LATCH CYLINDER LOCK	HEAVY	0056CH5020
56 RADIAL WALK-IN LATCH CYLINDER LOCK	LIGHT	0056CL5020
56 RADIAL WALK-IN LATCH PADLOCK	LIGHT	0056L05020

Description	Offset	Part No.
STD STRIKE WITH TONGUE	-3.2mm to 6.4mm	0056005002
STD STRIKE WITH TONGUE	19.0mm to 38.1mm	0056005003
STD STRIKE WITH TONGUE	44.5mm to 63.5mm	0056005005
STD STRIKE WITH TONGUE	76.2mm to 101.6mm	0056005008



KASON 58 RADIAL WALK-IN LATCH

For medium to heavy duty commercial use. High pressure die-cast zinc body and strike housing, malleable iron handle with polished chromium plated finish. Cylinder locking body and suitable for padlock. Reliable, self-closing action with adjustable strike that provides positive air-tight closure.

Description	SPRING	Part No.
58 RADIAL WALK-IN LATCH	LIGHT	0058CL5020
58 RADIAL WALK-IN LATCH	HEAVY	0058CH5020

Description	Offset	Part No
STD STRIKE WITH TONGUE	-3.2mm to 6.4mm	0058005001
STD STRIKE WITH TONGUE	19.0mm to 38.1mm	0058005002
STD STRIKE WITH TONGUE	44.5mm to 63.5mm	0058005003
ROLLER STRIKE	-3.2mm to 6.4mm	0059005001
ROLLER STRIKE	19.0mm to 38.1mm	0059005002
ROLLER STRIKE	44.5mm to 63.5mm	0059005003



FERMOD INTERNAL RELEASE

Punch action internal safety device for Fermo fasteners 620, 621, 920, 920HP, 921 and 921HP. Replacement part only - supplied with complete fastener.

Description	Part No.
620/920 SERIES INTERNAL RELEASE	355050
MUSHROOM HEAD PUSH ONLY	189942



KASON INNER SAFETY DOOR RELEASE

Steel rod and flange with safety-glow plastic knob. Kasonized finish.

Description	Part No.
481 INNER DOOR RELEASE FOR TYPE 56 DOOR LATCH	0481A00600
481 INNER DOOR RELEASE FOR TYPE 58 DOOR LATCH	0481C00600

Safety push handle with low conduction fiberglass rod for low temp applications.

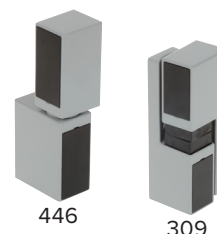
Description	Part No.
487 FROST FREE INSIDE DOOR RELEASE HANDLE	0487C00600



FERMOD 309/446 DOOR HINGES

Enamel finished hinges for overlapping coldroom doors. Interchangeable for left or right hand doors.

Description	Rising	Max Door Weight	Part No.
309E HINGE	Yes	50kg	360017
446E HINGE	No	60kg	360019



FERMOD 480/481 DOOR HINGES

Composite constructed hinges for overlapping coldroom doors. Interchangeable for left or right hand doors.

Description	Rising	Pin Material	Max Door Weight	Part No.
480 HINGE	No	Bichromated Steel	40kg	360023
480 HP HINGE	No	Stainless Steel	40kg	360024
481 HINGE	Yes	Bichromated Steel	40kg	360025
481 HP HINGE	Yes	Stainless Steel	40kg	360026



FERMOD PIVOT SPRING HINGE

Chromium plated finish hinge for light overlapping doors. Minimum door thickness: 40mm. Interchangeable for left or right hand doors with or without door stop. Fixed pivots are not supplied. Available for TORX or SQUARE fitting.

Description	Finish	Part No.
PIVOT SPRING HINGE - TORX	Chromium Plated	175
PIVOT SPRING HINGE - SQUARE	Chromium Plated	176



KASON EDGEMOUNT HINGE

Zamak chromium plated finish hinge suitable for left or right handed operation. Offset 1 1/8" (28mm) and serrated adjusting plate allows for 3/16" adjustment. Built in overclose assures constant door pressure and full gasket seal. Dimensions 127 x 30mm.

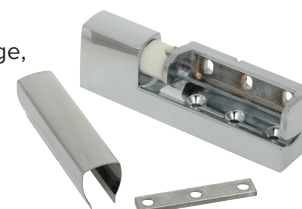
Description	Part No.
EDGEMOUNT HINGE OFFSET 28MM (1-1/8")	405422842



KASON 1267 CAM RISE HINGE

Suitable for 600mm wide doors up to 70kg or 900mm doors up to 45kg. High pressure, die-cast zinc flange, strap and adjustment plate; brass cover with polished chrome finish. Self lubricating Zytel cam allows door to close automatically or to stay open at 120° angle. Reversible cam for use on right or left opening door and lift off feature for easy door removal. Offset of 41.3 to 60.3mm with adjustment range of 4.8mm.

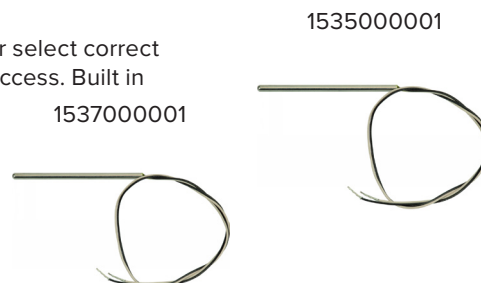
Description	Part No.
1267 CAM RISE HINGE CHROMIUM PLATED	1267000014



KASON PIVOT HINGE

Chromium plated finish hinge with field adjustable die-cast zinc spring cartridge lets user select correct tension for smoother door operation. Cam dwell keeps door open beyond 90° for easy access. Built in overclose assures constant door pressure and full gasket seal.

Description	Part No.
1535 PIVOT SPRING HINGE	1535000001
1537 PIVOT SPRING HINGE	1537000001



KASON 1092 DOOR CLOSER

Brakes movement, shuts door noiselessly and keeps it closed. Re-closes door opened as result of temperature-pressure build up. Kasonized steel finish.

Description	Part No.
1092 DOOR CLOSER HOOK FLUSH	1092000004
1092 DOOR CLOSER HOOK OFFSET 28.6MM	1092000008



FERMOD PRESSURE RELIEF VALVE

Made from composite material resistant to cleaning products. Suitable for temperatures down to -30°C. Fitted with 8W 230V heating element. For wall and ceiling mount. 80mm diameter bore x 125mm diameter flange.

Description	Wall Thickness	Part No.
PRESSURE RELIEF VALVE	60-120mm	2220TN
PRESSURE RELIEF VALVE	120-200mm	2220TN-L200



CAREL COLDWATCH PERSONNEL ALARM

Safety system for low temperature cold rooms. Complies with European standard UNI EN 378-1:2008, Annex D "Protection for people who are inside cold rooms", point 3 "Emergency switch or signal". The control unit, which is fixed outside the cold room, combines a siren and flashing light with back up battery in the event of blackouts. Emergency button inside the cold room has an LED on the push button that is on at all times.

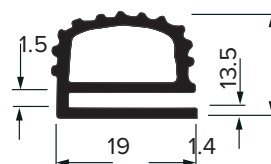


Description	Part No.
COLDWATCH COLD ROOM ALARM	CM00005953

FERMOD REF 27 DOOR GASKET

For use at temperatures to -30°C.

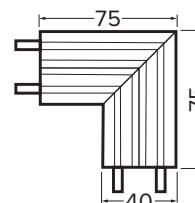
Description	Part No.
REF 27 WHITE TPE GASKET PER METRE	365003/1
REF 27 WHITE TPE GASKET PER 25 METRE ROLL	365003



FERMOD REF 67 DOOR GASKET

For use at temperatures from -45°C to +50°C. 25m roll is supplied complete with a 5m plastic insert/fixing strip.

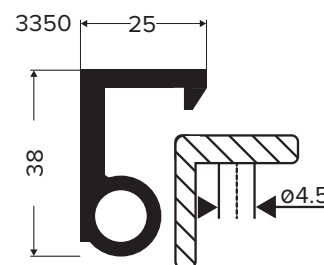
Description	Part No.
REF 67 BLACK EPDM GASKET PER METRE	365008/1
REF 67 BLACK EPDM GASKET PER 25 METRE ROLL	365008
ANGLE PIECE FOR GASKET REF 67	00067CN



FERMOD FLOOR GASKET

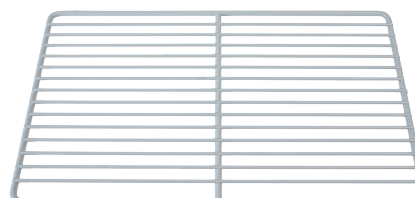
For use at temperatures down to -45°C. Gasket supplied in 2.1m and 3.4m lengths.

Description	Part No.
SOFT RUBBER FLOOR GASKET 2.1M LENGTH	33502.1M
SOFT RUBBER FLOOR GASKET 3.4M LENGTH	33503.4M
FIXING STRIP 2.1M LENGTH	3362



PLASTIC COATED SHELVES

Description	Dimensions	Part No.
GREY COATED GRID GN 1/1	530 x 325 mm	307211
GREY COATED GRID GN 2/1	650 x 530 mm	307212



SHELF CLIPS

Description	Part No.
K SHAPED SHELF CLIP	G350.08
SHELF CLIP	3.01.12.0002



G350.08



3.01.12.0002



HOSE CLAMPS

Description	Part No.
HOSE CLAMP 10-16MM	409081
HOSE CLAMP 15-25MM	409082
HOSE CLAMP 25-40MM	409083
HOSE CLAMP 32-50MM	409084
HOSE CLAMP 60-80MM	409085



O-RING SETS

Each pack contains an assortment of sizes.

Description	Sizes	Part No.
425 PIECE O-RING SET	9.5x1.9 up to 27x3.6	322090
880 PIECE O-RING SET	8.7x1.9 up to 30.2x3.6	322091



13A FUSED PLUG TOPS

Description	Part No.
BLACK MOULDED 13AMP PLUG WITH 2M STRAIGHT LEAD	102049
BLACK MOULDED 13AMP PLUG WITH 1.5M COILED LEAD	102048
WHITE PLUG FITTED WITH 13A FUSE	105056
BLACK PLUG FITTED WITH 13A FUSE	105057
BLACK RUBBER PLUG FITTED WITH 13A FUSE	105058



6.3X25MM QUICK ACTING FUSES

Description	Part No.
QUICK ACTING CARTRIDGE FUSE 3A 6.3 X 25MM	105061
QUICK ACTING CARTRIDGE FUSE 5A 6.3 X 25MM	105062
QUICK ACTING CARTRIDGE FUSE 10A 6.3 X 25MM	105063
QUICK ACTING CARTRIDGE FUSE 13A 6.3 X 25MM	105064



6.3X32MM FUSES

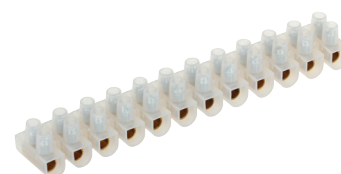
Description	DELAY	FAST
	Part No.	Part No.
FUSE 6.3X32 250V 5A PACK OF 10	105070	105073
FUSE 6.3X32 250V 10A PACK OF 10	105071	105074
FUSE 6.3X32 250V 16A PACK OF 10	105072	105075



TERMINAL STRIPS

Made of Polyethylene with a maximum operating temperature of up to 80°C.

Description	Part No.
5AMP TERMINAL STRIP	102200
15AMP TERMINAL STRIP	102201
30AMP TERMINAL STRIP	102202



INSULATED CRIMP TERMINALS

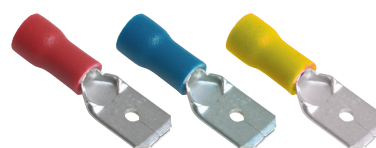
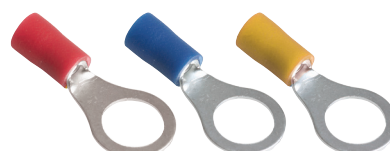
Supplied in packs of 100.

Description	Size	Cable	Part No.
RED 18A FORK TERMINALS	4mm	0.5-1.5mm ²	102007
RED 18A FORK TERMINALS	5mm	0.5-1.5mm ²	102008
RED 18A FORK TERMINALS	6mm	0.5-1.5mm ²	102009
BLUE 24A FORK TERMINALS	4mm	1.5-2.5mm ²	102010
BLUE 24A FORK TERMINALS	5mm	1.5-2.5mm ²	102011
BLUE 24A FORK TERMINALS	6mm	1.5-2.5mm ²	102012
YELLOW 36A FORK TERMINALS	4mm	2.5-6mm ²	102013
YELLOW 36A FORK TERMINALS	5mm	2.5-6mm ²	102014
YELLOW 36A FORK TERMINALS	6mm	2.5-6mm ²	102015

Description	Size	Cable	Part No.
RED 19A RING TERMINALS	3.5mm	0.5-1.5mm ²	102038
RED 19A RING TERMINALS	4mm	0.5-1.5mm ²	102039
RED 19A RING TERMINALS	5mm	0.5-1.5mm ²	102040
RED 19A RING TERMINALS	6mm	0.5-1.5mm ²	102041
BLUE 27A RING TERMINALS	4mm	1.5-2.5mm ²	102042
BLUE 27A RING TERMINALS	5mm	1.5-2.5mm ²	102043
BLUE 27A RING TERMINALS	6mm	1.5-2.5mm ²	102044
YELLOW 48A RING TERMINALS	4mm	2.5-6mm ²	102045
YELLOW 48A RING TERMINALS	5mm	2.5-6mm ²	102046
YELLOW 48A RING TERMINALS	6mm	2.5-6mm ²	102047

Description	Size	Cable	Part No.
RED 12A F SPADE TERMINALS	2.8mm	0.5-1.5mm ²	102025
RED 12A F SPADE TERMINALS	4.8mm	0.5-1.5mm ²	102026
RED 12A F SPADE TERMINALS	6.3mm	0.5-1.5mm ²	102027
BLUE 16A F SPADE TERMINALS	6.3mm	1.5-2.5mm ²	102028
YELLOW 20A F SPADE TERMINALS	6.3mm	2.5-6mm ²	102029
RED 12A M SPADE TERMINALS	6.3mm	0.5-1.5mm ²	102032
BLUE 16A M SPADE TERMINALS	6.3mm	1.5-2.5mm ²	102033
YELLOW 20A M SPADE TERMINALS	6.3mm	2.5-6mm ²	102034
RED 10A PIGGYBACK TERMINALS	6.3mm	0.5-1.5mm ²	102030
BLUE 15A PIGGYBACK TERMINALS	6.3mm	1.5-2.5mm ²	102031

Description	Size	Cable	Part No.
RED BUTT SPLICE	1.7mm	0.5-1.5mm ²	102035
BLUE BUTT SPLICE	2.3mm	1.5-2.5mm ²	102036
YELLOW BUTT SPLICE	3.4mm	2.5-6mm ²	102037



CRIMPING TERMINAL ASSORTMENT

Contents 150 terminals (approx):

- + 10 each of RV1.25-4, RF2-5, RV1.25-5, SV1.25-35, SV1.25-5, BV1.25, RV2-3.5, RV2-4, RV2-5, SV2-4 and BV2
- + 7 each of SV2-5, FDD1.25-7A, MDD1.25-250, FDD2-250A and MDD1.25-250
- + 5 each of RV5.5-5, RV5.5-6 and BV5.5

Description	Part No.
150 PIECE CRIMPING TERMINAL KIT	18160



100 PIECE CRIMPING TOOL/TERMINAL KIT

Crimping/wire stripping tool supplied with an assortment of approx 60 insulated and 40 non insulated crimp terminals:

- + Insulated terminals size: 0.5-1.0mm² (red), 1.5-2.5mm² (blue) and 4.0-6.0mm² (yellow)
- + Non-insulated terminals size: 1.5mm², 2.5mm², 4.0mm² and 6.0mm²



Description	Part No.
100 PIECE CRIMPING TOOL/TERMINAL KIT	13658

590 PIECE CRIMPING TOOL/TERMINAL KIT

Ratchet Crimping tool supplied with a wide assortment of approx 590 insulated crimp terminals:

- + Insulated terminals size: 0.5-1.0mm² (red), 1.5-2.5mm² (blue) and 4.0-6.0mm² (yellow)



Description	Part No.
590 PIECE CRIMPING TOOL/TERMINAL KIT	56383

QUICK CHANGE RATCHET ACTION CRIMPING TOOL

Ratcheting crimpers. Fitted with ergonomic handles, which accommodate either single or double handed operation. The incorporated ratchet mechanism is designed to reduce the amount of pressure required for completing a crimp, which increases comfort and reduces the risk of repetitive strain injuries.

Manufactured from carbon steel and supplied with two sets of swappable jaws, suitable for crimping the following insulated terminals:- red channel: 0.5-1.00mm², blue channel: 1.5-2.5mm² and yellow channel: 4.0-6.0mm², and non-insulated crimps 1.5, 2.5, 6 and 10mm.



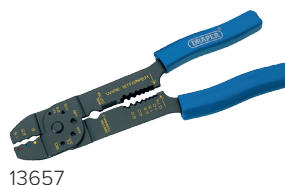
Description	Part No.
RATCHET ACTION CRIMPING TOOL (220MM)	64336

DRAPER 4 WAY CRIMPING TOOLS

Manufactured from steel hardened with moulded grip handles. Can crimp terminals, shear small bolts, cut and strip wires.

- + Crimping insulated terminals size: 1.5mm² (red), 2.5mm² (blue) and 6.0mm² (yellow)
- + Crimping ignition terminals
- + Wire stripping: 0.75, 1.0, 1.5, 2.5, 4.0 and 6.0mm²
- + Shears bolts size: 2.6, 3.0, 3.5, 4.0 and 5.0mm.

Description	Part No.
DRAPER 215MM 4 WAY CRIMPING TOOL	13657
DRAPER REDLINE 200MM 4 WAY CRIMPING TOOL	67652



DRAPER INSULATING TAPE

Description	Sale Quantity	Part No.
10M X 19MM MIXED COLOURS INSULATION TAPE	8	68157
20M ROLL YELLOW/GREEN INSULATION TAPE	1	65348
20M ROLL BLACK INSULATION TAPE EACH	1	11909
10M ROLL BLACK INSULATION TAPE EACH	1	11910-1
10M ROLL BLACK INSULATION TAPE	8	11910
10M ROLL RED INSULATION TAPE EACH	1	11912/1
10M ROLL RED INSULATION TAPE	8	11912
10M ROLL BLUE INSULATION TAPE EACH	1	11915/1
10M ROLL BLUE INSULATION TAPE	8	11915



DRAPER CABLE TIES

Description	Part No.
ASSORTED NYLON CABLE TIE PACK (200 PIECE)	90725
ASSORTED NYLON CABLE TIE PACK (650 PIECE)	90734
ASSORTED COLOURED NYLON CABLE TIE PACK (650 PIECE)	90737



TESTO 760 DIGITAL MULTIMETER

The Testo 760 digital multimeter family includes three models suitable for all important electrical measuring tasks. Function keys replace the traditional dial on all three instruments, which means easier operation and greater reliability. Measurement parameters are detected automatically via the assignment of the measuring sockets and also shown by the illumination of the appropriate function keys.

Description	Part No.
TESTO 760-1 MULTIMETER	05907601
TESTO 760-2 TRMS MULTIMETER	05907602
TESTO 760-3 TRMS MULTIMETER	05907603



TESTO 770 CLAMP METER

The Testo 770 clamp meter features automatic measurement parameter detection which ensures fast and reliable work. In the current and voltage area, all three versions of the clamp meter detect direct and alternating current and automatically select other parameters such as resistance, diode, capacitance, and continuity where applicable.

Description	Part No.
TESTO 770-1 CABLE-GRAB CLAMP METER	05907701
TESTO 770-2 CABLE-GRAB CLAMP METER	05907702
TESTO 770-3 CABLE-GRAB CLAMP METER	05907703



TESTO 750 VOLTAGE TESTER

The Testo 750 Voltage Tester have an all-round LED display. This means the display can be seen from all angles and guarantees an ideal voltage indication.

Description	Part No.
TESTO 750-1 VOLTAGE TESTER	05907501
TESTO 750-2 VOLTAGE TESTER	05907502
TESTO 750-3 VOLTAGE TESTER	05907503



TESTO 755 CURRENT & VOLTAGE TESTER

The Testo 755 Current & Voltage Testers automatically select the correct setting for the application, minimising dangers associated with using the incorrect settings. Both versions have all the important functions for determining voltage / de-energisation, for measuring current and resistance, as well as for continuity tests.

Description	Part No.
TESTO 755-1 CURRENT-VOLTAGE TESTER	05907551
TESTO 755-2 CURRENT-VOLTAGE TESTER	05907552



TESTO 745 NON-CONTACT VOLTAGE TESTER

The Testo 745 Non-Contact Voltage Tester has a voltage range of up to 1,000 V AC. It is ideal for fast initial checking of any suspected fault sources. The Voltage Tester will flash red and makes a corresponding warning sound if an alternating current is present. It also has a filter for high-frequency interference signals therefore increasing its reliability. IP67 rated.



Description	Part No.
TESTO 745 NON-CONTACT VOLTAGE TESTER	05907450

TPI 133 DIGITAL MULTIMETER

A hand-held autoranging DMM that features extra large numerals on the LCD and data hold for all functions and ranges.

- + Large LCD that is easy to read at all angles and the majority of lighting levels
- + Rubber Boot for added protection if the instrument is dropped
- + Multi-function to measure all electrical characteristics with one meter
- + 0.5% DCV basic accuracy
- + 0 to 750 ACV with maximum resolution of 1mV
- + 0 to 1,000 DCV; with maximum resolution of 0.1mV
- + 0 to 20MΩ with maximum resolution of 0.1Ω
- + 0 to 10 amps AC/DC with resolution of 0.1uA
- + AT II – 1000V, CAT III – 600V, cULus 61010-1
- + Meets CE and IEC 1010 requirements



Description	Part No.
TPI 133 DIGITAL MULTIMETER (Includes rubber boot, test lead set, 2A fuse, 10A fuse and 9V battery)	133

TPI 265 DIGITAL CLAMPMETER

A hand-held, autoranging clamp-on DMM. Ideal for cramped work areas and crowded electrical panels with its slim jaw and body. Extra large numerals, capacitance, frequency and data hold are just a few of the features.

- + Capacitance up to 4,000 micro-farads
- + Up to 400 AC amps with 0.01 resolution
- + Diode, resistance and audible continuity
- + Test start and run capacitors
- + Measure heat anticipator current
- + Determine thermocouple voltage
- + Test line and control voltages
- + Measure heating element resistance
- + Measure and adjust variable frequency drives
- + CAT III 600V rated; cULus 61010



Description	Part No.
TPI 265 DIGITAL CLAMP METER Includes carrying pouch, test lead set, battery	265

TPI 50 NON CONTACT VOLTAGE DETECTOR

Tip glows red when voltage is detected and a buzzer is activated. Non-contact AC voltage detection from 50 to 1000V.

Description	Part No.
TPI 50 NON-CONTACT VOLTAGE DETECTOR	50



MARTINDALE VOLTAGE INDICATOR, PROVING DEVICE & LOCK OUT KIT

The complete solution for safe isolation, the Martindale VIPDLOK138 Lock Out Kit contains the VI13800 voltage indicator, PD440 proving device, along with a complete lock out kit, supplied in soft carry cases. The kit simplifies compliance with Health & Safety recommendations for safe working practices when maintaining or installing electrical plant and equipment.



Description	Part No.
MARTINDALE VIPDLOK138 VOLTAGE INDICATOR, PROVING DEVICE & LOCK OUT KIT	VIPDLOK138

MARTINDALE VOLTAGE INDICATOR & PROVING DEVICE KIT

The Martindale VIPD138 kit includes the VI13800 voltage indicator and matching PD440 proving unit. Kits are supplied in the TC69 combination carry cases to ensure that proving devices are always at hand and provide the simplest solution for implementing safe isolation practices on-site in accordance the Electricity at Work Regulations. For convenience and to save time, the proving unit can be used without having to remove it from the case.



Description	Part No.
MARTINDALE VIPD138 VOLTAGE INDICATOR VI13800 & PD440 PROVING DEVICE KIT	VIPD138

MARTINDALE VOLTAGE INDICATOR

The VI13800 is an essential tool for proving electrical circuits are dead before carrying out maintenance and installation work in accordance with safe isolation procedures. The VI13800 ensures safety through simplicity, with no ranges, switches or batteries, reducing the risk of an incorrect reading.

The VI13800 provides instant visual AC and DC voltage indication in four stages from 50V to 400V. The bright long life LED indicators give clear and immediate display of the voltage level range. It has retractable probes, heavy duty finger guards and a two layer double insulated cable with a white inner core to give clear indication of damage that might compromise the user's safety.



Description	Part No.
MARTINDALE VI13800 VOLTAGE INDICATOR	VI13800

MARTINDALE 440V AC PROVING UNIT

The Martindale PD440 is a 440V AC proving device, designed to enable voltage indicators to be fully checked, in compliance with Health & Safety recommendations. Using a voltage indicator without first proving it is working correctly could prove fatal.

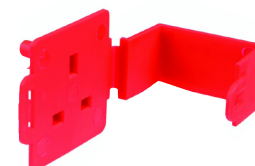
The PD440 is compatible with the new Martindale VI13800 & the Martindale VI13700.



Description	Part No.
MARTINDALE PD440 440V AC PROVING UNIT	PD440

MARTINDALE APPLIANCE LOCK OUT

The PL13 is a universal lock out device for UK BS1363 13A mains plugs. Simple and compact, the PL13 prevents appliances and electrical equipment from being plugged in during maintenance and can be used to restrict the use of hazardous or faulty equipment.



Description	Part No.
MARTINDALE PL13 APPLIANCE LOCK OUT	PL13

MARTINDALE INDUSTRIAL PLUG LOCKOUT

Completely encloses plugs to prevent accidental reconnection. Once the plug is inserted, the lock out device should be locked with a secure padlock and completed with a warning tag. Suitable for use with most plugs up to and including 32A. Inner dimensions – 80mm diameter and 150mm length.



Description	Part No.
MARTINDALE PL8 INDUSTRIAL PLUG LOCKOUT	PL8



MARTINDALE RED SAFETY PADLOCK

38mm safety padlock supplied with one key.

Description	Part No.
MARTINDALE RED SAFETY PADLOCK 38MM	PAD10R



MARTINDALE COMPREHENSIVE LOCK OUT KIT

Electrical safety is paramount when performing 17th Edition and Part P installation testing. Every year people suffer electric shock and burn injuries, some of which are fatal. Implementing the correct safe isolation procedures will ensure the safety of the electrician and avoid these accidents.

The Martindale universal lock out kit is compatible with most circuit breakers. It is supplied with a padlock that has its own unique key, and a safety hasp that enables multiple users to lock off with space for up to 6 padlocks.

The full 16 piece kit includes:

- + 1 x Padlock with unique key
- + 1 x Steel safety hasp, with space for up to 6 padlocks
- + 1 x Green mini MCB lock
- + 1 x Yellow mini MCB lock
- + 1 x Blue medium MCB lock
- + 1 x Large red MCB lock
- + 1 x Small red MCB lock
- + 1 x Red fuse lockout breaker
- + 1 x Yellow fuse lockout breaker
- + 5 x Danger tags which can be overwritten
- + 1 x Black marker for writing on Danger tags
- + 1 x TC55 soft carry case



Description	Part No.
MARTINDALE LOKKIT1 COMPREHENSIVE LOCK OUT KIT	LOKKIT1

TESTO 552 DIGITAL VACUUM GAUGE

For the evacuation of refrigeration, air conditioning and heat pump systems. Utilizes a sensor that requires no cleaning and is not affected by contamination.

- + 2400 hours of battery life with measuring cycle of 0.5 seconds
- + Vacuum range 1100-0 mbar/825080-0 micron at resolution of 0.01hPa / 10 micron
- + Parameter: mmHg, Torr, mbar, hPa, micron, inH₂O, inHg, Pa
- + Connections: 2 x 7/16" UNF

Description	Part No.
TESTO 552 DIGITAL VACUUM GAUGE	05605520



TESTO THERMAL PROBES

Clamp probes are used to measure Evaporator and Condenser temperatures using a Testo Digital Manifold. Also enables the manifold to calculate SuperHeat and SubCool values.

- + Clamp Probe suitable for pipes from 1/4" to 1 1/3"
- + For Models 550, 557, 570
- + Measuring Range -40 to +125 °C
- + Accurate ±1 °C (-20 to +85 °C)

Description	Part No.
NTC CLAMP PROBE	06135505



TESTO REFRIGERATION MANIFOLDS

A range of high-performance digital manifolds that accurately perform temperature and pressure measurements in seconds. They can automatically calculate superheat and subcooling for a wide range of different refrigerants quickly and easily. They can be used to service, maintain and commission all types of air conditioning, refrigeration and heat pump systems, perform timed pressure drop tests as well as standing pressure tests.

TESTO 549
Pressure & temperature measurement for servicing tasks.



TESTO 557 SET
With integrated vacuum measurement and 4-way valve block for commissioning/service work.



TESTO 570-1
For all demanding tasks such as error analysis.



Part No	05600550	05631558	05635701
Integrated temperature measurement	up to 2 NTC probes	up to 2 NTC probes	up to 3 NTC probes
Probes includes	no probes supplied	2 clamp probes	1 clamp probe
Bluetooth (connect to Testo Refrigeration App)	✗	✓	✗
Internal memory, optional Easycool software	✗	✗	✓
Site Glass	no	no	yes
2/4-way valve block	2	4	4
Refrigerants in Instrument	60	40	40
Refrigerant data can be updated	no	yes	yes
Pressure measuring range	-1 to +60 bar	up to 50bar	up to 50 bar
Pressure measurement accuracy	0.5 %fs	0.5 %fs	0.5 %fs
Pressure measurement resolution	0.01 bar	0.01 bar	0.01 bar
Pressure overload	65 bar	65 bar	65 bar
Connections	3x1/4" SAE	3x7/16" UNF & 1x5/8" UNF	3x7/16" UNF & 1x5/8" UNF
Temperature measurement/resolution	-50 to +150 °C ±0.5 °C	-50 to +150 °C ±0.5 °C	-50 to +150 °C ±0.5 °C
Dimensions	200 x 100 x 50mm	280 x 135 x 75mm	280 x 135 x 75mm
Weight	1049g	1200g (without batteries)	1200g (without batteries)

JAVAC MANIFOLD GAUGE KIT

4 valve manifold for R410A and R32 gases with ¼ turn control valves for fast operation and increased refrigerant flow. Forged aluminium body – durable and lightweight - with sight glass.

Kit Contents -

- + 4 valve R410/R32 manifold
- + 3 x 72" 1/4"-5/16" hoses
- + Carry case

Description	Part No.
JAVAC 4 WAY MANIFOLD GAUGE KIT	EL75172



MASTERCool MANIFOLD GAUGE SET

Manifold set with three 1500 mm ball valve hoses and one black 3/8" hose. Manifold has full 3/8" bore all the way through the block increases flow considerably for time saving faster charging. Ball valve rotates 90 degrees between two Teflon washers requiring little effort to turn, even under pressure marked in bar/° and opens and closes quickly with only a quarter turn

- + For R22, R134a, R404a, R407C, R507A
- + Gauge class 1.6 - diameter 80mm marked in bar/°C
- + Knob position shows whether valves are open or closed
- + All fittings 1/4" SAE, tee with branch 3/8"

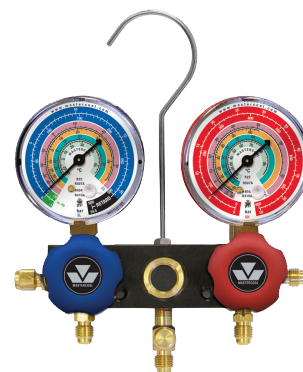
Description	Part No.
4 WAY MANIFOLD GAUGE SET	96261-MB-E



MASTERCOOL 2-WAY MANIFOLD GAUGE

- + Manifold with gauges, 1/4" fittings and 1/4" central tee
- + M/MB gauges for R22, R134a, R404a, R407C, R507A
- + RB gauge for R1270, R290, R600A
- + Gauge class 1.6 - diameter 63mm or 80mm marked in bar/°C
- + Free floating piston valve for reduced wear and tear
- + Double O ring for improved seal

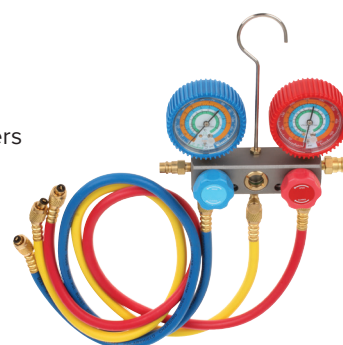
Description	Part No.
2-WAY ALUMINIUM MANIFOLD – 63MM	93103-M
2-WAY ALUMINIUM MANIFOLD – 80MM	93103-MB
2-WAY ALUMINIUM ISOBUTANE MANIFOLD – 80MM	93103-RB



NSR REFRIGERATION MANIFOLD & HOSE SET

- + Suitable for R12, R22, R502, R134a refrigerants
- + With sight glass aluminium alloy testing manifold body
- + Supplied with set of 3 (red, yellow & blue) charging hoses 36" (900mm) long and quick couplers
- + 65mm dia pressure gauges, with rubber protection on PN SHM30336A
- + Working pressure 600psi - burst pressure 3000psi
- + Connections 1/4" SAE

Description	Part No.
REFRIGERATION MANIFOLD	SHM30336
REFRIGERATION MANIFOLD & DIAL PROTECTOR	SHM30336A



YELLOW JACKET TITAN 4-WAY MANIFOLD

- + Manifold with gauges, 1/4" fittings and 1/4" central tee
- + For R134a, R404a, R407F gases
- + Lightweight forged aluminium body
- + Gauge class 1 - diameter 80mm marked in bar/psi/°C
- + Free floating piston valve for reduced wear and tear
- + Double O ring for improved seal

Description	Part No.
TITAN 4-WAY MANIFOLD GAUGE	49931



JAVAC NITROGEN PRESSURE REGULATOR

Designed for testing refrigeration systems that use R410A refrigerant gas.

- + 300 bar maximum inlet pressure
- + 0 – 50 bar (0 – 750 psi) outlet pressure range
- + 1/4" SAE flare outlet connection to allow for rapid connection to industry standard hoses
- + Large pressure adjustment knob to allow for easy pressure adjustment
- + 0-70 bar (0-1000 psi) working pressure gauge scale to allow for accurate delivery pressure setting

Description	Part No.
JAVAC NITROGEN PRESSURE REGULATOR	RS-750



MASTERCOOL NITROGEN PRESSURE REGULATOR

Single stage nitrogen regulator used to test systems for leaks when they do not contain refrigerant.

- + 1/4" SAE flare outlet port, with control valve, to keep pressure on the regulator at all times
- + T-handle for ease of pressure adjustment
- + 63mm gauges with guards
- + High pressure gauge 4400 psig (300 bar)/low pressure gauge 1000 psig (70 bar)



Description	Part No.
NITROGEN PRESSURE REGULATOR	53003

MASTERCOOL NITROGEN REGULATOR KIT

Single stage nitrogen regulator used to test systems for leaks when they do not contain refrigerant.

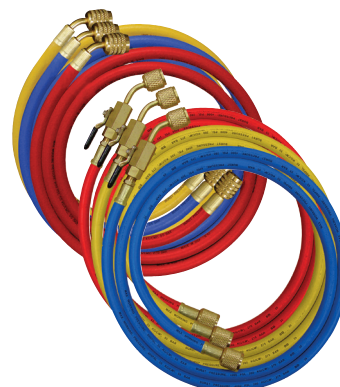
- + 53003 nitrogen pressure regulator
- + 48" yellow charging hose
- + Leak testing adapter
- + R410a straight adapter 1/4" FL-M x 5/16" swivel-F
- + Blow moulded case



Description	Part No.
NITROGEN PRESSURE REGULATOR KIT	53030

MASTERCOOL STANDARD 1/4" HOSE SETS

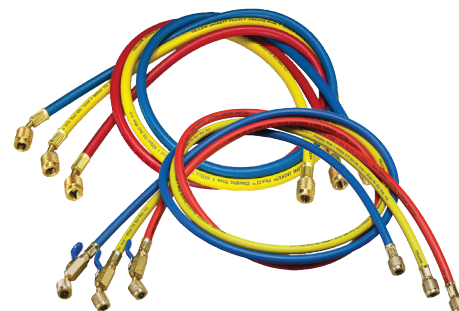
- + Set includes one blue, one red and one yellow hose with 1/4" SAE fittings
- + Working pressure 52 bar - burst 210 bar
- + Crimped with 8 segment dies for secure fit and maximum durability
- + Knurled brass nuts make finger tightening easy



Description	Part No.
SET STANDARD 1/4" HOSES 150CM	40360
SET STANDARD 1/4" HOSES C/W VALVE 90CM	90262-36
SET STANDARD 1/4" HOSES C/W VALVE 150CM	90262-60-E

YELLOW JACKET PLUS II™ 1/4" HOSE SETS

- + Set includes one blue, one red and one yellow hose with 1/4" flare fittings
- + Working pressure 55 bar (800 psi) - burst 276 bar (4000 psi)
- + Crimped with 8 segment dies for secure fit and maximum durability
- + Knurled brass nuts make finger tightening easy

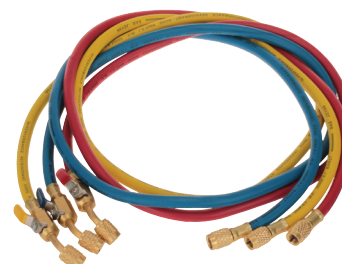


Description	Part No.
SET STANDARD 1/4" HOSES 72"	21986
SET STANDARD 1/4" HOSES C/W VALVE 72"	29986

NSR CHARGING HOSE SET WITH BALL VALVE

- + 36" (900mm) long set of 3 (red, yellow & blue) charging hoses
- + Working pressure 600psi - burst pressure 3000psi
- + Connections 1/4" SAE

Description	Part No.
CHARGE HOSE WITH BALL VALVE	CT60



HOSE ACCESSORIES

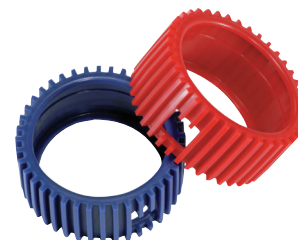
Description	Part No.
1/4" SAE TEFLON GASKET	42010-T
1/4" SAE DEPRESSOR (PACK OF 10)	42014-10



MASTERCOOL GAUGE PROTECTORS

Mastercool gauge protectors are built to cushion shock due to rough handling. The unique ribbing deadens bumps and deflects shocks. Snug fitting. Colour coded.

Description	Part No.
63MM BLUE GAUGE PROTECTOR	93253-E
63MM RED GAUGE PROTECTOR	93503-E
63MM SET OF BLUE/RED GAUGE PROTECTORS	93553-E
80MM BLUE GAUGE PROTECTOR	91253-EE
80MM RED GAUGE PROTECTOR	91503-EE
80MM SET OF BLUE/RED GAUGE PROTECTORS	91553-EE



YELLOW JACKET GAUGE PROTECTORS

Rubber boots slip easily around gauges to cushion and protect them from impact. Snug fitting. Colour coded.

Description	Part No.
SET OF 80MM GAUGE PROTECTORS	41910



NSR CS-02 REFRIGERANT FILLING STATION

Compact unit with electronic charging scales.

- + 4-valve manifold with 68mm diameter vacuum gauge
- + 1/3hp two stage vacuum pump with ultimate vacuum of 5 x 10Pa
- + High /low pressure gauge 68mm diameter
- + Set of four 60" charging hoses
- + 100kg electronic scales with built-in solenoid valve and 100 charge/recovery programs
- + Select measurement units kg/oz/lbs
- + Automatic shut-off and warning when charge complete
- + Suitable for fluorocarbon refrigerants

Description	Part No.
REFRIGERANT FILLING STATION	CS02

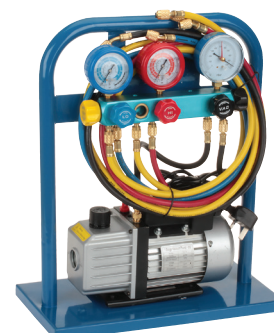


NSR CS-04 REFRIGERANT FILLING STATION

Compact unit supplied without the charging scales.

- + 5-valve manifold gauge with quick couplers and 80mm diameter vacuum gauge
- + 1/4hp single stage vacuum pump with ultimate vacuum of 10Pa
- + High/low pressure gauge 68mm diameter
- + Set of five 60" charging hoses
- + Suitable for fluorocarbon refrigerants

Description	Part No.
REFRIGERANT FILLING STATION	CS04



JAVAC CC-141 2 STAGE VACUUM PUMP

Comes with a tri-connector suitable for 1/4" SAE, 3/8" SAE and 1/2" ACME.

- + 1/3hp rotary vacuum pump
- + Flowrate of 5.3 CFM (150 litres/min)
- + Ultimate vacuum 15 Microns
- + Oil capacity 450ml
- + 110/240V/50Hz 1/3hp motor
- + Dimensions (l) 350mm x (w) 143mm x (h) 265mm
- + Weight 12kg



Description	Part No.
2 STAGE VACUUM PUMP 140L/M	CC-141

NSR TW-1A SINGLE STAGE VACUUM PUMP

- + 1/4hp rotary vacuum pump
- + Flowrate of 2 CFM (60 litres/min)
- + Ultimate vacuum 10Pa/75Microns
- + Inlet port 1/4" SAE
- + Oil capacity 250ml
- + 220-240V/50Hz
- + Dimensions 275 x 105 x 230mm
- + Weight 7.2kg



Description	Part No.
SINGLE STAGE VACUUM PUMP	TW-1A

NSR TW-1C DUAL STAGE VACUUM PUMP

- + 1/3hp rotary vacuum pump
- + Flowrate of 2 CFM (60 litres/min)
- + Ultimate vacuum 5x10Pa/25Microns
- + Inlet port 1/4" SAE
- + Oil capacity 250ml
- + 230V/50-60Hz with 1/3hp motor
- + Dimensions 315 x 125 x 240mm
- + Weight 9kg



Description	Part No.
DUAL STAGE VACUUM PUMP	TW-1C

YELLOW JACKET SUPEREVAC™ VACUUM PUMP

- + 1/2hp rotary vacuum pump
- + Flowrate of 142 litres/min
- + Inlet port 1/4" and 3/8" male flare
- + Oil capacity 34oz
- + 230V/50Hz
- + Thermal Overload Protection
- + Dimensions 406 x 152 x 292mm
- + Weight 15.4kg



Description	Part No.
SUPEREVAC™ VACUUM PUMP	93567

Vacuum pump oil available on page 60

JAVAC XTR PRO DUAL VOLTAGE RECOVERY MACHINE 240V

The XTR Pro features a quiet, heavy duty, 1/2 HP, high torque AC compressor that reduces noise by 50% and has a high recovery capacity. With built in manifold analyser that puts you in control of vapour, liquid and combined recovery.

Recoverable Gases:

- + Category III: R12, R134a, R401c, R406a, R500
- + Category IV: R22, R401a, R401b, R402b, R407c, R407d, R408a, R409a, R411a, R411b, R412a, R502, R509
- + Category V: R402a, R404a, R407a, R407b, R410a
- + Recovery rates: Combined 30kg/hr, Push Pull 300kg/hr, Vapour 15kg/hr, Liquid 90kg/hr

Other Features:

- + 240/110V/ 50-60Hz/ 7A with 0.3kW motor
- + Dimensions: (l) 420mm x (w) 290mm x (h) 420mm
- + Weight 13kg
- + Integrated self purge
- + Ceramic Bearings
- + Oil Free Compressor



Description	Part No.
XTR PRO DUAL VOLTAGE RECOVERY MACHINE	XTR-PRO-DV

MASTERCool DUAL VOLTAGE TWIN TURBO REFRIGERANT RECOVERY SYSTEM

- + Revolutionary double piston oil-less compressor
- + Safety high pressure switch
- + Simple internal structure for field service
- + Largest volume recovery rate in market
- + Compatible Refrigerants: All CFC, HCFC, and HFC's
- + Injection molded high density polyethylene case for maximum durability
- + Front cover has bumper guards built in to reduce damage to the control knobs
- + Dual Voltage 110/220 V – 50/60 Hz
- + 1/2 HP Oil Less Compressor
- + Operating Temperature: 32 to 122°F
- + Dimensions: 18" (l) x 10" (w) x 14" (h)
- + Weight: 28.3 lbs



Description	Part No.
DUAL VOLTAGE RECOVERY UNIT	69300-2V-UK

NSR TR260A REFRIGERANT RECOVERY UNIT

Oil-free, air cooled single piston style compressor with 1/2hp motor, capable of handling various refrigerants, including:

- + Category III: R12,R134A,R401C,R406A,R500 (recovery rate 1.57 kg/min liquid)
- + Category IV: R22, R401A, R401B, R402B, R407C, R407D, R408A, R409A, R411A, R411B, R412A, R502, R509 (recovery rate 1.81 kg/min liquid)
- + Category V: R402A, R404A, R407A, R407B, R410A, R507 (recovery rate 1.85 kg/min liquid)
- + Multi-function valve design and automatic clearance of remaining refrigerants.
- + One-off rotary technology with high intensity and concussion resistance.
- + Automatic safety shut-off 38.5bar/3850kPa(558psi)
- + 230V/50-60Hz/4A with 1/2hp motor
- + Dimensions 500 x 220 x 340mm
- + Weight 16kg



Description	Part No.
REFRIGERANT RECOVERY CHARGING UNIT	TR260A

Vacuum pump oil available on page 60

JAVAC HYDROCARBON RECOVERY UNIT 240V

Refrigerant Recovery unit designed especially to handle Hydrocarbon gases as well as standard refrigerant gases. It has high electrical specification with encapsulated components and 5m hard wired mains lead with moulded plug.

Recoverable Gases:

+ R12, R22, R134A, R404A, R407C, R410A, R413A, R417A, R502, R600A, R290, R134yf, R32

Other Features:

- + Recovery rate 32kg/hr
- + Onboard Storage Capacity of 250g
- + Inlet port 1/4" SAE
- + 230V/50Hz 1.3A 145W
- + Dimensions: (l) 470mm x (w) 235mm x (h) 335mm
- + Weight 21kg



Description	Part No.
HYDROCARBON RECOVERY UNIT 240V	CARESAVER-240V

MASTERCOOL VACUUM PUMP OIL

Description	Part No.
10OZ VACUUM PUMP OIL - INDIVIDUAL BOTTLE	90010-1
18OZ VACUUM PUMP OIL - INDIVIDUAL BOTTLE	90018-1
24OZ VACUUM PUMP OIL - INDIVIDUAL BOTTLE	90024-1
32OZ VACUUM PUMP OIL - INDIVIDUAL BOTTLE	90032-1



YELLOW JACKET VACUUM PUMP OIL

Description	Part No.
QUART VACUUM PUMP OIL - INDIVIDUAL BOTTLE	93192



MASTERCOOL REFRIGERANT RECOVERY CYLINDER

Designed for transportation and storage of refrigeration gases. Tank conforms to PED and ADR regulations, CE and TUV approved. Available with a single valve for vapour or Y-valve for liquid/vapour.

- + Connection 1/4" FL-M (7/16-20)
- + Service pressure 32bar, test pressure 48bar, burst pressure >108bar

Description	Part No.
6 LITRE DOUBLE VALVE GREEN TANK	61010-EUGRN
12.5 LITRE DOUBLE VALVE GREEN TANK	62010-EUGRN
27.2 LITRE SINGLE 1/4" VALVE GREEN TANK	63009-EUGRN-1/4
BOTTLE ADAPTOR INCLUDING WASHER	M012



MASTERCOOL 1/4" SAE CAN TAP VALVE

Screw on model to European Standard. Gasket assures leak proof operation. Built-in safety check. For R290 & R600 330g can.

Description	Part No.
1/4" SAE CAN TAP VALVE	85510-E



MASTERCool ACCU CHARGE II SCALES

- + Program desired quantities and an alarm alerts to turn off refrigerant
- + Displays amount of refrigerant left in the tank
- + Capacity: 110kg (240lbs) with accuracy of $\pm 0.01\text{kg}/0.16\text{oz}/0.01\text{lb}$
- + 3hrs auto off function
- + Operating temperature: 0 to 49°C (32 to 120°F)
- + Battery life approximately 40 hrs or use optional transformer
- + 22 x 22cm (9 x 9") platform
- + Optional remote solenoid for automatic operation



Description	Part No.
ACCU CHARGE II SCALES	98210-A

MASTERCool WIRELESS DIGITAL SCALES

- + Program desired quantities and an alarm alerts to turn off refrigerant
- + Displays amount of refrigerant left in the tank
- + Keypad provides synchronization and zeroing
- + Magnet on remote allows easy placement on fixtures
- + Battery life and wireless signal strength indication
- + Capacity: 110 kg
- + Accuracy: $\pm 0.01\text{lb}/0.005\text{kg}$ or 0.1% of reading if above with resolution 0.02 lb/0.01 kg
- + Automatic shut-off after 3 hours
- + Battery life approximately 20 hours
- + 310mm platform accepts all US & EU standard cylinders



Description	Part No.
WIRELESS ELECTRONIC SCALES	98310

MASTERCool ELECTRONIC CHARGING SCALES

- + Two keys for easy operation and one touch tare weighing function
- + Select units from grams & ounces
- + Auto zero and auto off if not used for 2 minutes
- + Capacity: 5000g/176oz at sensitivity of 1g/ 0.035oz
- + Dimension: (w) 140 x (l) 185 x (h) 35 mm with platform 120 mm
- + Power source: 2 x AAA 1.5v battery



Description	Part No.
ELECTRONIC CHARGING SCALES	98209

NSR CHARGING SCALES



RCS-7010



RCS-9020

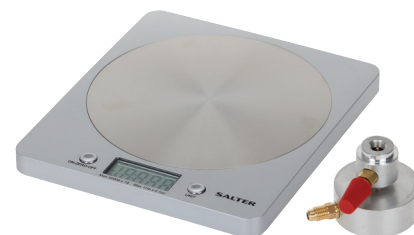
Description	Features	Capacity	Power supply	Battery Life	Platform size	Weight	Part No.
ELECTRONIC PROGRAMMABLE CHARGING SCALES	programmable, with built in alarm	70kg	9Vdc battery	30h	223x223mm	2.485kg	RCS-7010
ELECTRONIC AUTOMATIC CHARGING SCALES supplied with 950mm long 600psi charging hose	programmable, with built in alarm and solenoid valve for charging pre-set weights of refrigerant	90kg	5x1.5Vdc battery	60h	223x223mm	2.74kg	RCS-9020

HYDROCARBON BOTTLE CONNECTOR & SCALES KIT

Kit comprises digital scales and R600 cylinder connector with control valve that acts as stand to keep the gas cylinder stable on the scales.

Scales details:

- + Select units from grams & ounces
- + Auto zero and auto off if not used for 3 minutes
- + Capacity: 5000g/176oz at sensitivity of 1g/ 0.1oz
- + Dimension: (w) 160 x (l) 180 x (h) 21mm with platform 120 mm
- + Power source: 2 x CR2032 3V battery



Description	Part No.	Trade Price
HYDROCARBON BOTTLE CONNECTOR AND SCALES KIT	603056	£51.50

TESTO 316-3 REFRIGERANT LEAK DETECTOR

Optimal sensitivity to all CFC, HCFC, and HFC refrigerants, detecting leaks as small as 4g/a. Conforming with F-gas regulations.

- + Electrochemical heated diode sensor with high/low sensitivity adjustment
- + Progressive LEDs to indicate leak size and audible alarm
- + Detectable refrigerants R-22, R32, R134a, R-404A, R410A, R-507, R438A and all CFCs, HFCs and PFCs
- + Conforms: SAE J1627, EN 14624, EG 2004/108/EG
- + Power: 2 D batteries for 16 hours continuous use



Description	Part No.
TESTO 316-3 REFRIGERANT LEAK DETECTOR	05633163

MASTERCool RAPTOR REFRIGERANT LEAK DETECTOR

Accurate and reliable electronic leak detection.

- + Detects refrigerants CFCs, HCFCs, HFCs
- + Flexible 430mm probe
- + 3 levels of sensitivity with 5 levels of detection
- + Keypad Control
- + Visual leak level indicator and variable frequency audible alarm
- + Detects leaks as small as 3gr (1/10oz) per year
- + Meets and exceeds SAE J1627 and CE conformity



Description	Part No.
RAPTOR REFRIGERANT LEAK DETECTOR	56100

MASTERCool INTELLASENSE III COMBUSTIBLE GAS LEAK DETECTOR

- + Heated tin oxide sensing element
- + 2000 hour sensor life
- + Flexible 381mm probe with length with environment sensing element to eliminate the potential of false alarms
- + 50 – 1000 ppm ultimate sensitivity
- + Audible leak alarm & visual leak size indicator
- + Six vertical LED display with enabled selectively (red, yellow or green) to display information to the user



Description	Part No.
INTELLASENSE III COMBUSTIBLE GAS LEAK DETECTOR	55975



MASTERCOOL UV DETECTION COMPACT TORCH

- + 17 LED Bulb UV Illumination
- + Battery Life: 4 hours continuous leak detection
- + Includes safety glasses
- + Aluminum body with Type III anodized finish
- + Easy grip texture
- + 25,000 hour bulb life
- + 3 AAA batteries

**Description****Part No.**

17 LED UV DETECTION COMPACT TORCH

53517-UV

MASTERCOOL UV LEAK DETECTOR DYE

Description**No of applications****Part No.**

MINI CARTRIDGE TYPE DYE INJECTOR

10

53809

CONCENTRATED DYE CARTRIDGE

10

53810

CONCENTRATED DYE 60ML BOTTLE

25

53625

UNIVERSAL DYE - 6 X 1/4OZ PACKS

6

92699

MASTERCOOL INFRARED THERMOMETERS

52224-A INFRARED THERMOMETER WITH LASER**52224-D INFRARED THERMOMETER WITH MULTI LASER****52225-A DUAL TEMP PLUS INFRARED THERMOMETER****52225-B INFRARED THERMOMETER WITH DUAL LASER**

Part No	52224-A	52224-D	52225-A	52225-B
Non-Contact Temperature Range	-50 to 500°C	-60 to 760°C	-60 to 760°C	-60 to 1000°C
Thermocouple Temperature Range			-64 to 1400°C	-64 to 1400°C
Field of View	12:01	12:01	30:01:00	30:01:00
Display Illumination	Backlit LCD Display	Backlit LCD Display	Backlit LCD Display	Backlit LCD Display
IR Target Indicator	Single Laser Spot	Eight Laser Spot	Single Laser Spot	Dual Laser Spot
Emissivity	0.95	Adjustable 0.10 to 1.0	Adjustable 0.10 to 1.0	0.95
Resolution	0.5°C	0.1°C	0.1°C	0.1°C
Modes		E, MIN, MAX, DIFF, AVG	MIN, MAX, DIFF, AVG	MIN, MAX, DIFF, AVG
Accuracy	±2°C or ±2% of reading	±2% of reading or 2°C	±2% of reading	±2% of reading
Response Time	0.5 seconds	1 second	1 second	1 second
Auto Power Off	15 seconds	15 seconds	15 seconds	15 seconds
Battery Life	14 hours approx	14 hours approx	14 hours approx	14 hours approx
Included Accessories	instruction manual moulded carrying case 2 AAA batteries	instruction manual moulded carrying case 2 AAA batteries"	instruction manual moulded carrying case 2 AAA batteries 1m thermocouple probe	instruction manual moulded carrying case 2 AAA batteries
Optional Probes			3m wire/penetration surface/air probes	1 & 3m wire/penetration surface/air probes
Dimensions	200 x 100 x 50mm	200 x 113 x 62mm	280 x 135 x 75mm	280 x 135 x 75mm
Weight	1049g	1060g	1200g (without batteries)	1200g (without batteries)

TESTO INFRARED THERMOMETERS

**830-T1 INFRARED THERMOMETER
WITH LASER**



**830-T2 INFRARED THERMOMETER
WITH TWO POINT LASER**



**830-T4 INFRARED THERMOMETER WITH
TWO POINT LASER**



Model	05608311	05608312	05608314
Non-Contact Temperature Range	-30 to +400 °C	-30 to +400 °C	-30 to +400 °C
Accuracy	±1.5 °C or ±1.5 % of mv (+0.1 to +400 °C) ±2 °C or ±2 % of mv (-30 to 0 °C) (the higher value applies)	±1.5 °C or ±1.5 % of mv (+0.1 to +400 °C) ±2 °C or ±2 % of mv (-30 to 0 °C) (the higher value applies)	±1.5 °C (-20 to 0 °C) ±2 °C (-30 to -20.1 °C) ±1 °C or ±1 % of mv (Remaining Range)
Optics	10:1	12:1	30:1
Optional Probes	No	Yes (not supplied)	Yes (not supplied)
Measuring rate	0.5 s	0.5 s	0.5 s
Infrared resolution	0.1°C	0.1°C	0.1°C
Dimensions	190 x 75 x 38 mm	190 x 75 x 38 mm	190 x 75 x 38 mm
Operating temperature	-20 to +50 °C	-20 to +50 °C	-20 to +50 °C
Housing	ABS	ABS	ABS
Battery type	9V block battery	9V block battery	9V block battery
Battery life	15 h	15 h	15 h
Storage temperature	-40 to +70 °C	-40 to +70 °C	-40 to +70 °C
Weight	200g	200g	200g

TESTO INFRARED THERMOMETER SETS

Testo infrared thermometer sets can be used for carrying out non-contact and contact temperature measurements. The kit includes a cross-strip/surface temperature sensor for carrying out control measurements or for measuring materials with low degrees of emission and a protective leather case.

Description	Part No.
830-T2 INFRARED THERMOMETER SET	05638312
830-T4 INFRARED THERMOMETER SET	05638314



MASTERCOOL HANDHELD WATERPROOF DIGITAL THERMOMETER

- + Measuring Range: -58 to 572°F / -50 to 300°C
- + Maximum/Minimum temperature memory
- + Data hold function
- + High/Low temperature alarm setting
- + Key tone for operation confirmation
- + Stainless steel probe
- + Foldaway stand

Description	Part No.
MASTERCOOL HANDHELD WATERPROOF DIGITAL THERMOMETER	52229



MARTINDALE DT175 DIGITAL THERMOMETER

The DT175 is a high performance dual input K Type digital thermometer enabling the measurement of both input and output temperatures of systems and equipment simultaneously. The DT175 has a wide measuring range from -200°C to 1372°C. The compact thermometer has large digits and a back light for easy viewing in all environments. There is a fold away built in stand for optimum viewing angle. The DT175 is supplied with two bead thermocouples and is compatible with a wide range of optional Martindale K Type probes including air probes, penetration probes and clamp and surface probes.



Description	Part No.
MARTINDALE DT175 DUAL INPUT K TYPE DIGITAL THERMOMETER	DT175
MARTINDALE THERMOMETRY KIT comes complete with the DT175 thermometer, 2 x bead type probes, 2 x pipe clamp probes, 1 x air probe and 1 x surface probe	THERMOKIT

ETI MINI RAYTEMP INFRARED THERMOMETER

Compact, lightweight and low cost infrared thermometer. Simply aim and pull the trigger to display the temperature of the item being measured. Suitable for a wide range of food and industrial applications where contact with the item to be measured is an issue.

- + Temperature range: -50 to 330°C with a 0.1°C resolution
- + Accuracy: $\pm 2^\circ\text{C}$ over the range of 0 to 330°C, $\pm 4^\circ\text{C}$ from -50 to 0°C
- + Easy to read LCD display with low battery, and backlight indication
- + Auto power off facility that turns the instrument off after 10 seconds to preserve battery life
- + Laser assisted alignment to assist in pin-pointing the area of measurement
- + 12:1 optic ratio (target distance/diameter ratio) and a fixed emissivity of 0.95



Description	Part No.
MULTI FUNCTION THERMOMETER	814-080

ETI IR-POCKET INFRARED THERMOMETER

Non-contact infrared thermometer.

- + Temperature range: -49.9 to 349.9°C with a resolution of 0.1°C/°F (switchable)
- + $\pm 2\%$ of reading or $\pm 2^\circ\text{C}$ whichever is greater
- + Maximum and minimum temperature functions
- + Auto power off facility that turns the instrument off after 15 seconds to preserve battery life
- + Target ratio 1:1 and emissivity of 0.95 (default) - adjustable 0.1 to 1



Description	Part No.
IR-POCKET INFRARED THERMOMETER	814-060

ETI MULTI FUNCTION THERMOMETER

Compact digital multi-function thermometer with an easy to read LCD that displays both temperature & the alarm set temperatures.

- + Temperature range: -49.9 to +199.9°C with a 0.1°C resolution
- + Accuracy: $\pm 1^\circ\text{C}$ (-20 to +150°C)
- + Display hold facility and max/min memory function
- + Adjustable audible high/low temperature alarm
- + Supplied with stainless steel probe $\varnothing 3.3 \times 125\text{mm}$ with a 1m PVC lead



Description	Part No.
MULTI FUNCTION THERMOMETER	810-961

ETI ECOTEMP MAX /MIN THERMOMETER

Features a large, easy to read, LCD display with display hold and max/min memory functions. Both open circuit and low battery indication are displayed, when applicable.

- + Temperature range: -49.9 to 199.9°C with a 0.1°C/°F resolution
- + Accuracy: $\pm 1^\circ\text{C}$ (-49.9 to 149.9°C)
- + Display: custom 22mm LCD
- + Dimensions: 20 x 58 x 165mm
- + Supplied with stainless steel probe $\varnothing 3.3 \times 125\text{mm}$ with a 700mm silicone lead



Description	Part No.
ECOTEMP MAX/MIN THERMOMETER	810-950
REPLACEMENT PENETRATION TEMPERATURE PROBE	810-951

ETI FIBREGLASS TEMPERATURE PROBE

This fibreglass exposed junction wire probe is ideal for measuring the air temperature of ovens, hot cupboards and similar appliances.

- + Temperature range: -60 to 350°C
- + Response time less than 0.5 seconds
- + Dimensions: $\varnothing 1.5 \times 1000\text{mm}$ long fitted with type K miniature plug



Description	Part No.
FIBREGLASS WIRE PROBE TYPE K	133-382

ETI PENETRATION TEMPERATURE PROBE

Stainless steel hand held penetration probe $\varnothing 3.3 \times 130\text{mm}$ with 1000mm straight lead and type K miniature plug connector. Suitable for measuring temperature in a wide variety of applications including meat, liquids and semi-solids.

- + Temperature range: -60 to 250°C
- + Dimensions: $\varnothing 3.3 \times 130\text{mm} \times 1000\text{mm}$ lead



Description	Part No.
STAINLESS STEEL PENETRATION PROBE TYPE K	123-160

ETI HORIZONTAL SPIRIT THERMOMETER

Horizontal spirit-filled thermometer ideal for fridge or freezer. Measures 20 x 30 x 122mm and has stainless steel end trim incorporating hooks for hanging from a shelf and fixing holes for wall mounting.

- + Temperature range: -40 to 20°C (-40 to 80°F)
- + Easy to read colour coded zones
- + Clear ABS plastic



Description	Part No.
ECOTEMP MAX/MIN THERMOMETER	803-925

BUDGET SPIRIT THERMOMETER

Vertical spirit-filled thermometer ideal for fridge or freezer.

- + Temperature range: -50 to 50°C
- + Dimensions $\varnothing 20 \times 210\text{mm}$
- + Plastic case with hook for hanging from shelf



Description	Part No.	Trade Price
THERMOMETER WITH HOOK -50 TO +50°C	704050	£1.50

PORTAPACK PRO HD WELDING/BRAZING KIT

Comprises:

- + Portapack trolley
- + Oxygen & acetylene regulators with flash arrestors
- + 5 metre hose set with check valves
- + Industrial heavy duty shank & mixer torch
- + 4 welding/brazing nozzles (No 1, 3, 5 & 7)
- + Igniter and a pair of goggles

Does not include gas cylinders



Description	Part No.
PORTAPAK PRO WELDING/BRAZING KIT	GK06

OXY TURBOSET 110 WELDING/BRAZING KIT

Small lightweight system in a compact metal carrier complete with disposable gas cylinders. Kit includes:

- + 1 x Oxygen Cylinder
- + 1 x Mapp Gas Cylinder
- + Flint Lighter
- + Protective Goggles
- + Star with 4 Nozzles
- + Multipurpose Spanner
- + Filler Metal and Flux



Description	Part No.
OXY TURBOSET 110 WELDING KIT	OXY-131090.02M

REPLACEMENT GAS CYLINDERS

MAPP Gas and Oxygen cylinders suitable for the Oxy TurboSet system and similar gas brazing torches.

Description	Part No.	Trade Price
MAPP-PLUS GAS CYLINDER 453G	902014	£9.50
OXY TURBO OXYGEN CYLINDER	OXY-480300	£20.90



ROTHERNBERGER SUPER FIRE 2 BRAZING TORCH

For soldering and brazing copper, brass and steel using propane or MAPP cylinder. The Super Fire 2 is the market leader in brazing torches. The Super Fire 2 has a concentrated high heat, anti-flare, adjustable flame. With a powerful turbine flame pattern is fast and effective for most soldering and brazing applications and the instant piezo ignition ensures the torch lights safely and quickly. It fits all cylinders with a 1" US thread and other cylinders with an adaptor.

Description	Part No.
ROTHERNBERGER SUPER FIRE 2 BRAZING TORCH	35644



TURBO TX504 EXTREME BRAZING TORCH

For soldering and brazing copper, brass and steel using map gas cylinder. TurboTorch swirl combustion generates more heat than other hand torches for faster brazing times and less gas consumption. Durable piezo ignition, stainless steel nozzle and quick disconnect couplings between handle and tips. Four way control lock.

Description	Part No.
TX504 TURBO TORCH EXTREME	061146



NSR S3 SERIES BRAZING TORCH

For soldering and brazing copper, brass and steel using propane or MAPP gas cylinder. Quick, self lighting, with variable flame control and brass tip that swivels 360 degrees. Four way control lock.



Description	Part No.
S3 SERIES BRAZING TORCH	030

NSR SNAKE BRAZING TORCH

For soldering and brazing with MAPP gas or Propane.



Description	Part No.
SNAKE BRAZING TORCH	IS660T

SKI TYPE BRAZING/WELDING GOGGLES

One piece goggle with soft moulded body and spatter resistant acetate lens. Wide vision and shade 5 lens. Meets requirements of EN166 and EN169.



Description	Part No.
SKI TYPE BRAZING/WELDING GOGGLES	P3310

FLIP-UP BRAZING/WELDING GOGGLES

One piece goggle with soft moulded body and flip lens design. Indirect vent PVC housing. Rectangular 108 x 50mm flip up screen. Clear and shade 5 lens. Meets requirements of EN166, EN169 and EN175.



Description	Part No.
FLIP-UP BRAZING/WELDING GOGGLES	P3390

OXY BRAZEFLUX FLUX

Description	Part No.
BRAZING FLUX MINI-POT 100G	OXY-BRAZFLUX



TA-1 POWDER/PASTE FLUX

Description	Part No.
TA-1 POWDER FLUX 250G	060201
TA-1 POWDER FLUX 500G	060197



JOMA COPPER-FLO™ ALLOY BRAZING RODS

For joining of copper pipes and tubes in refrigeration applications. 2.4mm square x 600mm long. Supplied in pack of 10 rods.



Description	Part No.
JOMA COPPERFLO RODS	701001

COPPER PHOSPHOROUS BRAZING RODS

For braze-welding of copper-copper and copper-brass with melting temperature of 660°C. Weight of filler metal 75g. Supplied in blister pack of 10 rods.



Description	Part No.
COPPER PHOSPHOROUS RODS	OXY-101510

SILVER ALLOY FLUX COATED BRAZING RODS

For braze-welding of iron-iron, iron-copper, iron-brass and brass-brass. Melting temperature of 640°C. Weight of filler metal 35g. Supplied in blister pack of 5 rods.



Description	Part No.
SILVER ALLOY FLUX COATED RODS	OXY-101550

SILVER BRAZING RODS

For brazing copper, brass and steel in refrigeration applications.

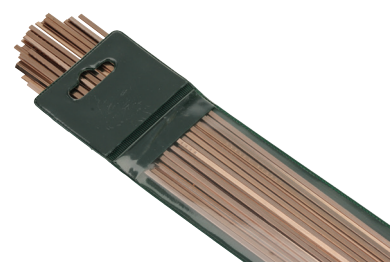
Description	Part No.
2% SILVER S2 ROLOT RODS 1KG 2 X 2 X 500MM	060183
30% SILVER CAD FREE RODS 1.5 X 500MM	060195
55% SILVER BRAZING RODS 1.5 X 500MM	060190



PHOSON/PHOSBOND BRAZING RODS

For brazing copper to copper or copper to brass. Self fluxing for copper to copper joints.

Description	Part No.
PHOSON 0.5% SILVER RODS 1LB 1 X 5 X 500MM	060200
PHOSBOND 0% SILVER RODS 3 X 500MM	060192



DRAPER VDE HAND TOOLS

Expert Quality, special steel hardened and tempered with cutting edges separately induction hardened. Ergonomic handle provides improved performance while each plier is individually tested to 10,000V for safe 1000Vac or 1500Vdc live line working.

Description	Part No.
VDE COMBINATION PLIERS 160MM	69170
VDE COMBINATION PLIERS 180MM	69171
VDE COMBINATION PLIERS 200MM	69172

Description	Part No.
VDE LONG NOSE PLIERS 160MM	69174
VDE LONG NOSE PLIERS 200MM	69176

Description	Part No.
VDE DIAGONAL SIDE CUTTERS 180MM	69180
VDE DIAGONAL SIDE CUTTERS 200MM	69181

Description	Part No.
VDE WIRE STRIPPERS 160MM	50256

Description	Part No.
VDE WATERPUMP PLIERS 250MM	50293



DRAPER VDE 10 PIECE INTERCHANGABLE SCREWDRIVER SET

Contents:

- + 4 plain slot sizes: 3.0 x 100, 4.0 x 100, 5.5 x 100 and 6.5 x 100mm
- + 2 cross slot sizes: No.1 and 2
- + 2 PZ TYPE: No.1 and 2
- + Fully insulated high torque screwdriver handle
- + Fully insulated precision screwdriver handle

Description	Part No.
VDE 10 PIECE INTERCHANGABLE SCREWDRIVER SET	05721



DRAPER EXPERT VDE SCREWDRIVER SET

For working on live circuits of 1kV AC and 1.5kV DC, tested to 10kV. Chemically blacked Chrome Vanadium steel blades with fully insulated soft grip handle with deep set blade sheath for safety.

Description	Part No.
VDE APPROVED 4 PIECE SCREWDRIVER SET	69233
VDE APPROVED 11 PIECE SCREWDRIVER SET	69234



DRAPER EXPERT 250MM HEAVY DUTY WATERPUMP PLIERS

Expert Quality, chrome vanadium steel hardened and tempered with chemically blacked finish, featuring multi position adjustments and 'no-nip' PVC dipped handles, which prevent the handles from locking together at their largest capacity and nipping the users hands.

Description	Part No.
EXPERT 250MM HEAVY DUTY WATERPUMP PLIERS	84445



DRAPER CIRCLIP PLIER SET 5PC

Combination circlip plier set for inside or outside circlips.

Contents:

- + Two straight heads
- + One 90° head
- + One 45° head
- + Pair of handles



Description	Part No.
CIRCLIP PLIER SET 5PC	19735

DRAPER CIRCLIP PLIERS

Industrial quality, chrome nickel steel hardened and tempered with a polished finish, chemically blacked tips and special non slip cushion-grip handles.

Description	Part No.
180MM STRAIGHT TIP EXTERNAL CIRCLIP PLIERS	38997
180MM STRAIGHT TIP INTERNAL CIRCLIP PLIERS	38995
170MM 90° DEGREE TIP EXTERNAL CIRCLIP PLIERS	38998
170MM 90° TIP INTERNAL CIRCLIP PLIERS	38996



DRAPER 7 PIECE REVERSIBLE RATCHETING SPANNER SET

Convenient to use reversible ratcheting spanners, is especially suited for use in confined spaces as only 5° movement is required. Manufactured from chrome vanadium steel with 15° offset head.

- + Sizes - 8, 10, 12, 13, 14, 17 and 19mm

Description	Part No.
DRAPER 7 PIECE REVERSIBLE RATCHETING SPANNER SET	51179



DRAPER SOFT GRIP ADJUSTABLE WRENCHES

Expert Quality, crescent-type wrenches manufactured from chrome vanadium steel hardened and tempered with a black oxide finish. Fitted with soft grip handles for comfort and with metric scale on the fixed jaw.

Description	Length	Capacity	Part No.
SOFT GRIP ADJUSTABLE WRENCHES	150mm	19mm	24893
SOFT GRIP ADJUSTABLE WRENCHES	200mm	24mm	24894
SOFT GRIP ADJUSTABLE WRENCHES	250mm	30mm	24896
SOFT GRIP ADJUSTABLE WRENCHES	300mm	38mm	24897



DRAPER ADJUSTABLE WRENCHES

Expert Quality, crescent-type wrenches manufactured from chrome vanadium steel hardened and tempered with black phosphate finish, polished profile and jaws. Jaws offset at 22°. The 150, 200, 250 and 300mm sizes have a graduated scale on the fixed jaws. Suitable for use in areas where chemicals and chrome plate can give off poisonous fumes.

Description	Length	Capacity	Part No.
ADJUSTABLE WRENCHES	150mm	24mm	52679
ADJUSTABLE WRENCHES	200mm	29mm	52680
ADJUSTABLE WRENCHES	250mm	33mm	52681
ADJUSTABLE WRENCHES	300mm	38mm	52682
ADJUSTABLE WRENCHES	375mm	45mm	52683
ADJUSTABLE WRENCHES	450mm	57mm	52684



DRAPER AUTOMATIC RETRACTABLE KNIFE

Retractable pattern complete with a two notch blade which retracts automatically when released. Diecast zinc alloy with enamelled finish.



Description	Part No.
AUTOMATIC RETRACTABLE TRIMMING KNIFE	66274

NSR 7" PINCH OFF PLIERS

For up to 5/16" OD tube.

Description	Part No.
7" PINCH OFF PLIERS	CT-201



NSR CAPILLARY CUTTER

For 3mm OD tube.

Description	Part No.
CAPILLARY CUTTER	RCT-01



NSR COMPACT AND HEAVY DUTY PIPE CUTTERS

Description	Part No.
COMPACT PIPE CUTTER	CT-127
HEAVY DUTY PIPE CUTTER	CT-274



MASTERCOOL SPRING STYLE TUBE BENDING SET

Set of 5 spring benders for 1/4", 5/16", 3/8", 1/2" and 5/8" O.D. tubing.

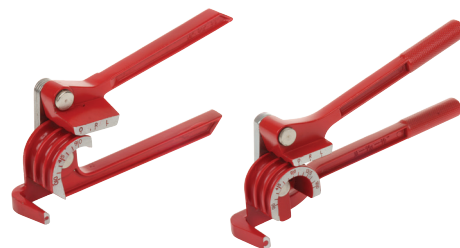
Description	Part No.
SPRING STYLE BENDING SET	70076



NSR LEVER STYLE TUBE BENDERS

For 1/4" - 5/16" - 3/8" tube.

Description	Part No.
90° LEVER STYLE TUBE BENDER	CT-368-90
180° LEVER STYLE TUBE BENDER	CT-368-180



NSR SWAGE PUNCHES

For pipe sizes 1/4" - 5/16" - 3/8" - 1/2" - 5/8".

Description	Part No.
MULTI HEAD SWAGE PUNCH TOOL	CT-95
SWAGING PUNCH SET	CT-193



MASTERCOOL SWAGE PUNCHES

For pipe sizes 1/4" - 5/16" - 3/8" - 1/2" - 5/8".

Description	Part No.
ALL-IN-ONE SWAGING PUNCH - NICKEL-CHROME FINISH	70040
5 PIECE SWAGING PUNCH SET	70048



NSR STANDARD FLARING/SWAGING KIT

Includes:

- + Flaring sizes 1/8", 3/16", 1/4", 5/16", 3/8", 7/16", 1/2", 5/8" & 3/4" OD tubing
- + Swage sizes 3/16", 1/4", 5/16", 3/8", 1/2", 5/8" and 3/4" OD tubing

Description	Part No.
STD FLARING/SWAGING KIT	CT-275L



NSR DELUXE FLARING/SWAGING KIT

Includes:

- + Square ratchet wrench: 3/16", 1/4", 5/16", 3/8"
- + Tube cutter for 1/8" to 1-1/8" dia tube
- + Flaring sizes 1/8", 3/16", 1/4", 5/16", 3/8", 7/16", 1/2", 5/8" and 3/4" OD tubing
- + Swage sizes 3/16", 1/4", 5/16", 3/8", 1/2", 5/8" and 3/4" OD tubing

Description	Part No.
DELUXE FLARING/SWAGING KIT	CT-278L



NSR MULTI HEADED FIN COMB

Designed to straighten deformed condenser or evaporator fins.

Description	Part No.
MULTI HEADED FIN COMB	CT-351



NSR SQUARE DRIVE RATCHET

3/16" - 1/4" - 5/16" - 3/8".

Description	Part No.
SQUARE DRIVE RATCHET	CT-122



MASTERCool RATCHET WRENCH

Steel forged wrench with reversible ratchet. 9/16", 1/2" hex, 1/4" and 3/16" square.

Description	Part No.
SQUARE AND HEX RATCHET WRENCH	70081



DRAPER HAND RIVETER KIT

Hand Riveter Kit for aluminium rivets. Cast aluminium body and carbon steel moving handle with moulded grips. With four interchangeable nozzles for 2.4, 3.2, 4.0 and 4.8mm rivets. Supplied with approximately 100 rivets.

Description	Part No.
HAND RIVETER KIT	27843



DRAPER WIRE/NYLON BRUSH SET

Set of three brushes each with a different fill (brass, nylon and stainless steel). Overall length of each brush 230mm.

Description	Part No.
WIRE/NYLON BRUSH SET	26928



DRAPER TECHNICIANS LAPTOP & TOOL BAG

Manufactured from water repellent polyester with adjustable carrying handle and detachable shoulder strap. Multiple internal and external pockets for storing tools, equipment and computers etc.



Description	Part No.
DRAPER TECHNICIANS LAPTOP & TOOL BAG	89209

DRAPER COMPARTMENT ORGANISERS

Plastic organisers with adjustable lift out compartments. Case incorporates carrying handle, 'snap fit' closures and a clear plastic lid.



Description	Part No.
15 COMPARTMENT ORGANISER	25922
22 COMPARTMENT ORGANISER	25924

RECTORSEAL ACID AWAY

A safe and easy to use acid neutralizer for POE oils that helps prevent compressor burnouts. It effectively removes the acid build-up that occurs in Polyol Ester refrigeration oils used in refrigeration and air conditioning systems. Can be used in hermetic and semi-hermetic compressors.



Description	Part No.
RECTORSEAL ACID AWAY 118 ML (4 FL. OZ.)	ACA2

CHARLES GALLO GUN & CARTRIDGE

Designed to clear condensate drain lines instantly. Insert a cartridge into the Gallo Gun and press the trigger to release 800 psi of oil free food grade CO₂ which clears the line. Environmentally friendly and stops the mess caused by water back-flushing. Suitable for use on drain lines 3/4" or smaller, or other industrial cleaning applications.

Gun is supplied with a single CO₂ cartridge and additional cartridges are sold separately in a pack of six.



Description	Part No.
GALLO GUN WITH 1 CO ₂ CARTRIDGE	GG-1
PACK OF 6 SWOOSH CO ₂ CARTRIDGES	GGC-6
ADAPTER KIT FOR GALLO GUN	GG-1A

MASTERCool FLUSHING KIT

Includes flush gun, hose, canister and canister adapter. Designed to work with any light weight flushing agent which can be mixed with pressurized air. Excellent for quickly and effectively removing refrigerant oil debris during retrofitting or compressor replacement.



Description	Part No.
MASTERCool FLUSHING KIT	91046-A

MASTERCool FLUSHING SOLVENT

Effectively removes debris and sludge from A/C components. Solvent-based, evaporates quickly and leaves no residue, O-ring safe, non-flammable and non-corrosive.



Description	Part No.
MASTERCool FLUSHING SOLVENT 32OZ	91049-32
MASTERCool FLUSHING SOLVENT 1 GALLON	91049-128



DIVERSI-FLUSH HVAC FLUSHING SOLVENT

For internal system cleaning system for dealing with compressor burn-outs, R22 retrofits and upgrades. The solvent is non-VOC, residue free and complies with EPA SNAP standards.

Description	Part No.
16OZ FLUSHING KIT REFILL	PF-16-GB



SUPER SEAL TOTAL

Provides a faster and compressor-friendly method of permanently sealing leaks in A/C and refrigeration systems. DRY R™ eliminates moisture, boosts sealant performance, and increases drier efficiency, while preventing waxing and acid formation. FLASH™ UV dye instantly distributes to detect all system leaks. SUPER SEAL TOTAL™ is engineered to HVACR industry standards and is easily installed into a fully-charged system, with no pump down or recovery. Recommended for systems that are not losing more than 15% of the entire charge over a four-week period. Supplied with connecting hose.

Description	Part No.
SUPER SEAL TOTAL 30ML (1OZ) for small systems up to 5kW/1.5 tons	AC2947A
SUPER SEAL TOTAL 89ML (3OZ) for medium systems of 5-17kW/1.5-5 tons	AC2944A



COOLSEAL EZ-JECT LEAK SEALER

Cool Seal™ will repair leaks in compressors, condensers, evaporators, o-rings and hoses – quickly and permanently. A non-polymer, oil soluble formula which is safe for air conditioning and refrigeration system components and recovery equipment. Also ideal for preventative maintenance. Each 15ml cartridge treats systems up 7kW size.

Description	Part No.
CS100CS EZ-JECT COOLSEAL LEAK SEALKIT	S020258
CS1CS COOLSEAL EZ-JECT 0.5OZ CARTRIDGE	S020259



DIVERSITECH MANUAL PUMP-UP WAND SPRAYER

The manual pump-up wand sprayer has a reinforced hose with a lock-on feature for continuous spraying. It comes with a 2 piece nozzle which can be detached for easy cleaning.

- + Acid impervious design to maximise service life.
- + Capacity 2 gallon (7.4 Litres).

Description	Part No.
WAND PUMP-UP SPRAYER	2602



ADVANCED ENGINEERING HYDROSPRAYER

Heavy duty 8 litre manual compression sprayer. Provides enough pressure to clean delicate coils but not to damage. Suitable for use with all Advanced coil cleaner concentrates.

Description	Part No.
HYDROSPRAYER 8L	S010107



RTU EVAPORATOR CLEANER

Ready to use evaporator coil cleaner that removes all common types of dirt and debris. Available 'Ready to Use' in a 1 litre spray bottle and a 5 litre bottle.

Description	Single Bottle Part No.	Box Quantity	Box Part No.
RTU EVAPORATOR CLEANER 1 LITRE	S010176GB-1	8	S010176GB
RTU EVAPORATOR CLEANER 5 LITRE	S010193GB-1	4	S010193GB



RTU EVAPORATOR CLEANER & DISINFECTANT

Ready to use evaporator coil cleaner with QX-60 which kills 99% bacteria and fungi in 60 seconds. Removes all common types of dirt and debris. Available 'Ready to Use' in a 1 litre spray bottle and a 5 litre bottle.

Description	Single Bottle Part No.	Box Quantity	Box Part No.
RTU EVAPORATOR CLEANER/DISINFECTANT 1 LITRE	S010196GB-1	8	S010196GB
RTU EVAPORATOR CLEANER/DISINFECTANT 5 LITRE	S010192GB-1	4	S010192GB



RTU CONDENSER CLEANER

Ready to use condenser coil cleaner that removes all common types of dirt and debris. Available 'Ready to Use' in a 1 litre spray bottle and a 5 litre bottle.

Description	Single Bottle Part No.	Box Quantity	Box Part No.
RTU CONDENSER CLEANER 1 LITRE	S010195GB-1	8	S010195GB
RTU CONDENSER CLEANER 5 LITRE	S010191GB-1	4	S010191GB



RTU BUBBLE UP LEAK DETECTOR

Ready to use bubble-up leak detector that's specifically designed for refrigerant leaks. Produces long-lasting bubbles and clings to all surfaces.

Description	Single Bottle Part No.	Box Quantity	Box Part No.
RTU BUBBLE UP LEAK DETECTOR 1 LITRE	S010173GB-1	8	S010173GB



CONCENTRATED COIL CLEANERS

Description	Makes	Single Bottle Part No.	Box Quantity	Box Part No.
VERTEX NEUTRAL PH 7.6 COIL CLEANER 5 LITRE - A non corrosive, neutral pH 7.6 cleaner for Condensers and Evaporators which will clean any type of dirt. Quickly removes grease, fats and organic matter and also removes rust, scales and inorganic salts and neutralises all unpleasant malodour. Ideal for micro channel and coils with protective coatings.	45 litre	S010389GB-1	4	S010389GB
HYDROCOIL EVAPORATOR CLEANER 5 LITRE - Alkaline evaporator cleaner for cleaning off tough dirt from evaporator coils and slime from condensate trays.	35 litre	S010181GB-1	4	S010181GB
SUPERCLEAN COIL CLEANER 5 LITRE - Heavy duty condenser cleaner that is as powerful as acid based cleaner, but safer to use. Highly concentrated and effective, it will safely remove the wide range of contaminants commonly found in condensers – without damaging the coil.	20 litre	S010171GB-1	4	S010171GB





3 STEP REFRIGERATOR LIFE SUPPORT

To help prevent condensate drain blockages Advanced Engineering developed a 3 Step Protection process for cleaning and maintaining condensate drains.

Step 1: Clean DrainSafe

Dissolves the slime build up that block up condensate drains

Step 2: Kill CoolSafe

A safe biocide and surfactant that removes microbes and food residue from the cooling coil

Step 3: Protect Jally Strips

Prevents the regrowth of microbes in the condensate tray for up to 12 months

DRAINSafe CONDENSATE DRAIN TREATMENT

Designed to quickly dissolve slime and biofilm buildups in condensate drain lines. Suitable for use on drains in and around food processing areas.

Description	Quantity	Part No.
DRAINSafe 500ML	1	S010257GB-1
DRAINSafe 500ML	8	S010257GB
DRAINSafe 5L	1	S010264GB-1
DRAINSafe 5L	4	S010264GB



COOLSafe CONDENSER CLEANER

Coil cleaner, with a mild formula, designed for use on food display cabinets, walk-in refrigerators and freezers. Will remove all common contaminants left by organic materials and foodstuffs on cooling coils. Available in a 'Ready to Use' 1 litre spray bottle and a 5 litre concentrate bottle that makes 30 litres.

Description	Quantity	Part No.
COOLSafe RTU 1L	1	S010234GB-1
COOLSafe RTU 1L	8	S010234GB
COOLSafe CONCENTRATE 5L	1	S010232GB-1
COOLSafe CONCENTRATE 5L	4	S010232GB



JALLY STRIPS CONDENSATE TRAY MICROBIAL CONTROL

Jally Strips provide up to twelve months protection from slime build up in condensate trays. Designed for use in large cooling systems and are safe for use in food preparation and storage areas.

Description	Part No.
JALLYSTRIP 1 X 6 STRIPS	S010371GB
JALLYSTRIP 1 X 50 STRIPS	S010370GB



ICE 'N' CLEAN ICE MACHINE CLEANER

Ice 'n' Clean is a new formulation of the HB30 ice machine cleaner. The new formula is odourless and has a colour indicator to ensure it has flushed out. It effectively and safely removes slime and limescale whilst disinfecting all surfaces. Suitable for use with all types of ice machines. The single shot bottle makes 10 litres of cleaner - enough for one machine - and means no measuring and will allow engineers to easily charge its use to a particular job.

Description	Quantity	Part No.
ICE 'N' CLEAN ONE SHOT BOTTLE 250ML	1	S010148GB-1
ICE 'N' CLEAN ONE SHOT BOTTLE 250ML	12	S010148GB
ICE 'N' CLEAN 1L	1	S010209GB-1
ICE 'N' CLEAN 1L	12	S010209GB
ICE 'N' CLEAN 5L	1	S010169GB-1
ICE 'N' CLEAN 5L	4	S010169GB



EASYFINISH FASCIA & CASE CLEANER

Suitable for most refrigeration and air conditioning units. Easily removes stubborn nicotine, grease and general grime.

Description	Quantity	Part No.
EASYFINISH FASCIA & CASE CLEANER 600ML	1	S010131GB-1
EASYFINISH FASCIA & CASE CLEANER 600ML	12	S010131GB



EASYCLEAN UNIVERSAL COIL CLEANER

Suitable for both evaporators and condensers. It's safe to use formula only attacks the dirt and not the coil. It provides effective cleaning as part of regular maintenance.

Description	Quantity	Part No.
EASYCLEAN UNIVERSAL COIL CLEANER 600ML	1	S010128GB-1
EASYCLEAN UNIVERSAL COIL CLEANER 600ML	12	S010128GB



EASYFOAM CONDENSER COIL CLEANER

A heavy duty, ready mixed for immediate use cleaner for use on air conditioning condenser coils. Its foaming formulation and powerful aerosol jet make it ideal for removing stubborn dirt from deep within problem coils.

Description	Quantity	Part No.
EASYFOAM CONDENSER COIL CLEANER 600ML	1	S010132GB-1
EASYFOAM CONDENSER COIL CLEANER 600ML	12	S010132GB



EASYCOAT COIL PROTECTOR

EasyCoat™ is an acrylic coating designed to guard coils against corrosive environmental factors such as acid rain, saline atmospheres and airborne ammonia. Its rapid-drying, waterproof, oil-resistant formulation ensures long-term protection for your air conditioning and refrigeration systems.

Description	Quantity	Part No.
EASYCOAT COIL PROTECTOR 600ML	1	S010129GB-1
EASYCOAT COIL PROTECTOR 600ML	12	S010129GB



GREASE GOBBLER SPRAY

Solvent based condenser cleaner that dissolves grease on contact and is quick drying. Double action of high-pressure blast from the powerful aerosol and solvent cleaning power quickly and easily restores system efficiency without the need to rinse. Non-conductive and non-flammable.

Description	Quantity	Part No.
GREASE GOBBLER CLEAN UP SPRAY 400ML	1	S010133GB-1
GREASE GOBBLER CLEAN UP SPRAY 400ML	12	S010133GB



PYROCOOL HEAT DISSIPATING & FLAME RETARDANT SPRAY

PyroCool is a heat-dissipating, flame-retardant gel, developed to dramatically reduce heat transfer during soldering, brazing and welding. It protects all surfaces and parts close to brazing, soldering and welding. Reduces risk of fire by protecting surfaces and dissipating heat. Sticks to all surfaces for maximum protection and is suitable for copper, steel and aluminium pipework.

Description	Quantity	Part No.
PYROCOOL SPRAY 1 LITRE	1	S050004GB-1
PYROCOOL SPRAY 1 LITRE	8	S050004GB





DIVERSITECH UNIVERSAL COIL CLEANER

A coil cleaner that is a food safe product that can be used in and around food processing areas. Non-foaming formula removes the dirt but does not attack aluminium, maximising heat transfer and extending equipment life. Removes contamination which cause build up of slime and sludge in the drain pan. Leaves a mono-molecular coating on the coil to protect it and make subsequent cleaning easier. Available in a Pro 5 litre container of concentrate or ready to use as G2G in a 1 litre spray bottle.

Description	Part No.
G2G-UNIVERSAL COIL CLEANER 1LT	G2G-UNIV-GB
PRO-UNIVERSAL COIL CLEANER 5LT	PRO-UNIV-GB



DIVERSITECH GREEN COIL CLEANER

A coil cleaner that is non-toxic, non-corrosive and readily biodegradable making it friendlier on the environment. Effective on indoor and outdoor coils. Non-toxic, non-corrosive and will not damage coils. Available in a Pro 5 litre container of concentrate or ready to use as G2G in a 1 litre spray bottle.

Description	Part No.
G2G-GREEN COIL CLEANER 1LT	G2G-GREEN+-GB
PRO-GREEN COIL CLEANER 5LT	PRO-GREEN+-GB



DIVERSITECH PRO COOL ICE MAKER CLEANER

Liquid ice machine cleaner that quickly removes soil and minerals. Nickel and metal safe with no noxious odour. Available in a Pro-5 litre container of concentrate or ready to use in a 500ml twin shot pack.

Description	Part No.
PRO-COOL CLEANER 500ML	SPRO-COOL
PRO-COOL CLEANER 5LT	PRO-COOL-GB



DIVERSITECH BUBBLE+ LEAK DETECTOR

- + High bubbling leak detector
- + Excellent viscosity – clings to surfaces
- + Easy to use with minimum residue which is easy clean up with water
- + Ready to use in a 1 litre spray bottle.

Description	Part No.
G2G BUBBLE+ LEAK DETECTOR 1LT	G2G-BUBBLE-GB



DIVERSITECH G2G SMELL BUSTER

A unique ready to use odour elimination spray that is not a perfume or cover up but actually removes unpleasant smells from the air. Available in a 1 litre trigger spray bottle or in tablet form.

Description	Part No.
G2G SMELL BUSTER SPRAY 1LT	G2G-SMELL-BUSTER
SMELL BUSTER TABLETS 2X60G	SMELL-BUSTER



RECTORSEAL CLEAN-N-SAFE

A non-acid, non-caustic coil cleaner that is safe to use and environmentally friendly. It effectively removes soil from air conditioning and refrigeration coils but is biodegradable and will not attack or corrode coils or other HVAC equipment.

Description	Part No.
CLEAN-N-SAFE AEROSOL 568G	902011
CLEAN-N-SAFE 5LT	902006



ROCOL LEAK DETECTOR, CLEANING PENETRATING SPRAYS

Description	Size	Part No.
LEAK DETECTOR SPRAY	300ml	32030
HEAVY DUTY CLEANER SPRAY	300ml	34011
PENETRATING SPRAY	300ml	14021
FOODLUBE DISMANTLING SPRAY	300ml	15720
FOODLUBE MULTI PASTE	85g	15750



WD40 LUBRICANT AEROSOL 300ML

A multi-purpose aerosol product which actively displaces water leaving a protective film of lubricant that is an electrically non-conductive barrier. Penetrates rust and corrosion by capillary action, loosening rusted parts. Cleans away grease and grime and protects metal against rust and corrosion.

Description	Part No.
WD40 LUBRICANT AEROSOL 300ml	501061



DRAPER SILICONE SPRAY

Anti-static lubricant for metal, plastic, vinyl, rubber and wood etc. Colourless, non-toxic and CFC free.

Description	Part No.
DRAPER 400ML SILICONE SPRAY	41923



MASTERCool ALUMBOND

Alumbond is aluminium filled epoxy specially formulated for repairing condenser coils, tanks, valves, pumps, castings, water jackets, radiators, etc., where non-rusting, non-magnetic aluminium finish is desired. A two-component epoxy formula highly concentrated with carefully selected pure aluminium particles, modified curing agents and special high quality additives to provide maximum strength, durability and ease of application. Each repair kit comprises a 94g tube of Hardener and Resin.

Description	Part No.
ALUMBOND SINGLE REPAIR KIT	90935



ACC SGM494 SILICONE GREASE

SGM494 is a general purpose silicone grease for use with hot and cold potable water. It can be used to lubricate plastic to plastic and metal to plastic parts. WRAS approved.

Description	Part No.
SGM494 TRANSLUCENT POTABLE SILICONE GREASE -50 TO +200°C	SGM494



ACC SPECIALIST SEALANTS

Working Temperature range: -60 to +225°C.

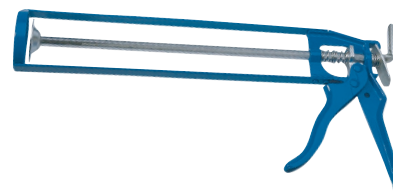
Description	75ML	300ML
	Part No.	Part No.
SILCOSET 153 TRANSLUCENT SILICONE SEALANT	501002	501005
SILCOSET 152 WHITE SILICONE SEALANT	501001	501004



DRAPER CAULKING GUN

For 310mm cartridges.

Description	Part No.
CAULKING GUN	16238





FERNOX LS-X SEALANT

Fast acting silicone paste suitable for use as a external sealing or joining compound. WRAS Approved.



Description	Part No.
LS-X LEAK SEALER EXTERNAL 50G	603022

PTFE TAPE

Description	Part No.
PTFE TAPE 12M BS7786 WRAS approved product	501080



ROCOL SCRUBS HAND CLEANING WIPES

Hand cleaning wipes with a citrus-based formula. Dual-textured for heavy duty cleaning that quickly loosens, dissolves and absorbs dirt, grease and grime.



Description	Part No.
SCRUBS HAND CLEANING WIPES TUB OF 72	042272

GENERAL PURPOSE BLUE ROLL

Blue paper roll for multipurpose wiping and cleaning tasks.

Description	Part No.
2 PLY BLUE ROLL 500 380X235MM SHEETS	176-5831



PROTECTIVE GLOVES

All-purpose glove ideal for use as a barrier layer.

Description	Size	Part No.
BOX OF 100 POWDER FREE WHITE LATEX GLOVES	Large	901001
BOX OF 100 POWDERED WHITE LATEX GLOVES	Large	901002
BOX OF 100 POWDER FREE BLUE VINYL GLOVES	Medium	901005
BOX OF 100 POWDER FREE BLUE VINYL GLOVES	Large	901003
BOX OF 100 POWDER FREE BLUE VINYL GLOVES	X Large	901006
BOX OF 100 POWDERED BLUE VINYL GLOVES	Large	901004



DRAPER PROTECTIVE GLOVES

All-purpose glove ideal for use as a barrier layer. Nitrile gloves are free from allergenic latex proteins and 3 times the puncture resistance One large size to fit all.

Description	Part No.
BOX OF 100 POWDER FREE BLUE NITRILE GLOVES	63758
BOX OF 100 POWDER FREE BLACK NITRILE GLOVES	63760



DRAPER HI-SENSITIVITY (SCREEN TOUCH) GLOVES

13 gauge polyester gloves with polyurethane coated palms and elasticated wristbands, allowing wearers to operate touch-screen devices without removal of gloves. Available in 3 sizes (M/L/XL).

Description	Part No.
HI-SENSITIVITY (SCREEN TOUCH) GLOVES - MEDIUM	65813
HI-SENSITIVITY (SCREEN TOUCH) GLOVES - LARGE	65816
HI-SENSITIVITY (SCREEN TOUCH) GLOVES - EXTRA LARGE	65822



TRAFFIGLOVE EXTRA DEXTERITY GLOVES

TG5220 range of lightweight gloves with level C cut protection compliant to EN388:2016. Three of the finger tips are exposed to improve dexterity and allows the wearer to use touchscreen devices. A PU coating offers excellent grip in dry conditions. Close fit and high tear and abrasion resistance makes this glove a good choice for general handling tasks with a cut risk.

- + EN 388:2016: 4 X 4 3 C
- + Liner: Nylon/HPPE/Glass
- + Coating: X-Dura PU

Description	Part No.
TRAFFIGLOVE EXTRA DEXTERITY GLOVES SIZE 9 (L) X-DURA PU C	901020
TRAFFIGLOVE EXTRA DEXTERITY GLOVES SIZE 8 (M) X-DURA PU C	901021
TRAFFIGLOVE EXTRA DEXTERITY GLOVES SIZE 10 (XL) X-DURA PU C	901022



DRAPER PVC GAUNTLETS

Manufactured to BS EN420 and EN388 Specifications 4.1.2.1. PVC dipped with open cuff for protection against acid, alkali and grease. Ideal for use during cleaning and washing.

Description	Part No.
PVC GAUNTLETS - 400MM	16229



DRAPER SAFETY GLASSES

- + Manufactured from impact resistant polycarbonate
- + Usable over conventional glasses
- + Conforms to EN166.1.F specifications

Description	Part No.
DRAPER SAFETY GLASSES	51132



DRAPER SAFETY GOGGLES

Safety glasses manufactured from impact resistant polycarbonate. Protective wraparound design with clear lens and distortion free viewing. Can be worn over spectacles.

Description	Part No.
DRAPER SAFETY GLASSES	51132



ESSENTIAL PPE KITS



To help keep your team and customers safe, First Choice Group has put together a critical list of Personal Protective Equipment (PPE).

From face masks to disposable gloves, check out our full range of PPE Essentials, here

For more information on First Choice Group, please visit

www.firstchoice-cs.co.uk

or follow us on social media




Also check out the **[First Choice Blog Page](#)** for our latest updates



First Choice
Group

 **First Choice**
Group

Welcome

 **Refrigeration Spares**



01543 577 778



enquiries@firstchoice-cs.co.uk



www.firstchoice-cs.co.uk