



For all your cooling requirements

0845 094 2644
info@galxc.co.uk
galxc.co.uk

Leading the Delivery of Integrated Solutions

Contents

2	Introduction
3	GalxC Group
4	Chillers & Heat Pump Range
6	High Capacity Water Chillers & Heat Pumps Range
8	Multi-Function Systems
10	Computer Rooms & Data Centres Innovative Cooling Solutions - GalxC Innovation Now -
16	GalxC - The Complete Service Solution



Since inception (2006), GalxC Cooling Services Ltd (or GalxC the Company) has made every effort towards improving its practices and procedures, essentially to create the finest customer services set-up, thus providing a professional and healthy communication with our customers Nationwide.

GalxC has evolved to become one of the UK's leading independent specialists in the field; the Company has developed an impressive portfolio of loyal customer base, operating in a diverse range of sectors.

GalxC pride itself on professional conduct, practical expertise and ability to select the most energy effective solution for each application and budget, from using reliable traditional methods or alternatively by introducing the latest technology available. GalxC has long recognised its greatest asset, their own valued staff, we are taking pride in providing the opportunity for our individual employees to shine and make the most of their potential, with their effort GalxC has now progressed and developed into an energetic business.

GalxC has continued to invest internally, creating a diverse infrastructure designed to maximise product range and services on offer whilst maintaining VFM at every level.

GalxC[®] Group

GalxC Cooling Services Ltd Sales & Hire

Water Chillers
Heat Pumps / Multi-Function Units
Design and Application
Installation

Services

Preventative Maintenance
Service Breakdown
24 Hour Response

GalxC Climate Control Ltd

Data Cooling
Telecommunication
Close Control

GalxC Air Conditioning & Refrigeration Ltd

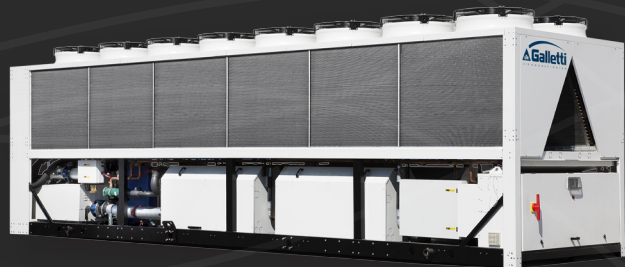
Air Con Split Systems
VRV - Multi-system
Design & Installations
Project Management

GalxC Facilities Management & Services Ltd

Hard FM Services
Projects & Facilities Management



- Chiller Sales
- Chiller Rental
- System Design
- Close Control Systems
- 24 / 7 Service Response
- Dedicated Technical Support
- System Rebuild & Modification
- Bespoke Systems & Turnkey Operation



Chillers & Heat Pump Range



MPE Series 4KW – 72KW

- Cooling version
- Heat pump version
- Microprocessor Control
- 25 models
- Standard & Low Noise options
- Smart defrost

Main Features

- Painted Galvanised sheet structure (RL9002) for effective resistance to corrosive agents.
- Fastening devices are made of non-oxidize materials or carbon steel which has undergone surface passivation treatment. Advanced design to improve easy access for periodic servicing.
- Carel Microprocessor protected by a IP65 polycarbonate enclosure ensuring unit can withstand outdoor siting. The self-adaptive logic enables the unit to operate with lower water content, the set point temperature automatically adapts with change in ambient conditions, the basic controller comes complete with MODBUS protocol.
- Hydraulic circuit equipped with differential switch, safety valve, and a strainer as a standard feature, additionally, where a buffer tank is included the following items are included also: Expansion tank, PRV, auto vent valve.
- R410a Refrigeration circuit, Scroll type compressor on all models.



LCE Series 40KW – 320KW

- Cooling version
- Heat pump version
- Microprocessor Control
- 20 models
- Standard & Low Noise options
- Ultra Low Noise
- Smart defrost
- Free Cooling

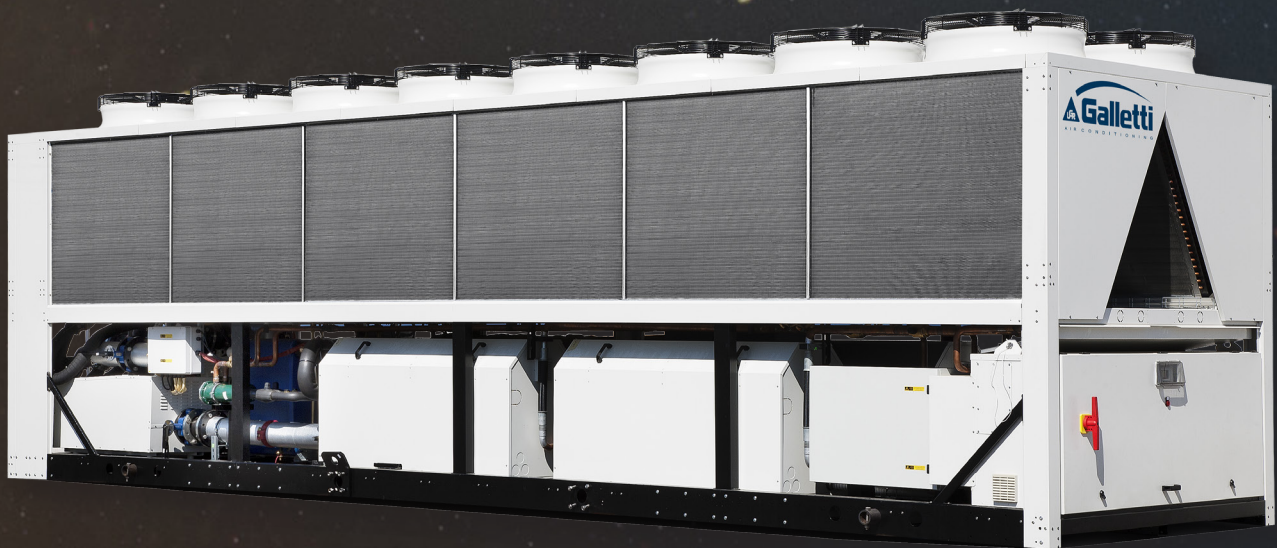
Main Features

In addition to the listed within the MPE section above, the LCE Series also benefit with further features such as:

- Electronic Expansion Valve as a standard.
- Full Separation between the 2 condensing coil sections.
- Smart defrost system.
- Free Cooling Option.
- Single / run & stand-by pump options (standard or high pressure pump options available).
- Advanced Carel technology with remote access availability.
- Heat Pump version capable to operate effectively at extreme ambient conditions as low as -15C, whilst hot water output temperature can be maintained at up to 40C.

High Capacity Water Chillers & Heat Pumps Range

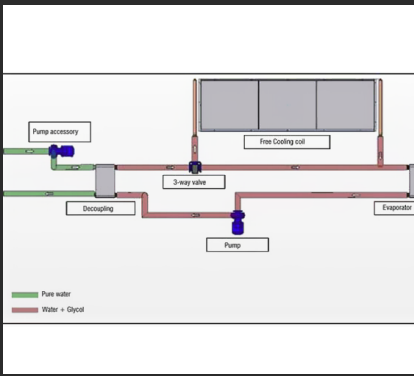
- Cooling Only range
- Heat pump Range
- Free Colling Range
- Advanced Microprocessor Control with full remote integration
- Design based on Energy efficiency & maximum performance
- Up to 4 circuits & 12 scroll compressors per chiller



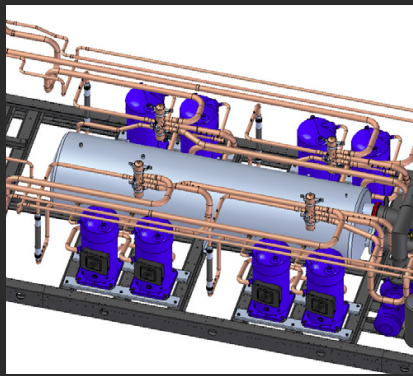
LSE Series 360KW – 1,200KW

Main Features

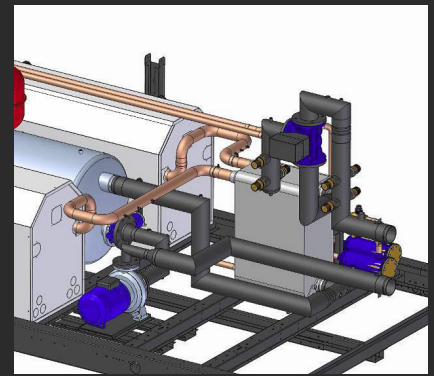
- Painted Galvanised sheet structure (RAL9002) for effective resistance to corrosive agents.
- Fastening devices are made of non-oxidize materials or carbon steel which has undergone surface passivation treatment.
- Advanced design to improve easy access for periodic servicing.
- The advanced microprocessor capable to synchronize operation of multi compressor systems, allowing smooth transition during load fluctuation due to increased or reduced demand, during partial load operation, individual compressors may still be operating at full load reducing potential energy losses due to unloading operation.
- The basic controller comes complete with MODBUS protocol.
- Hydraulic circuit equipped with differential switch, safety valve, and a strainer as a standard feature, additionally, where a buffer tank is included the following items are included also: Expansion tank, PRV, auto vent valve.



Free-cooling hydraulic circuit



Free-cooling basic hydraulic Schematic



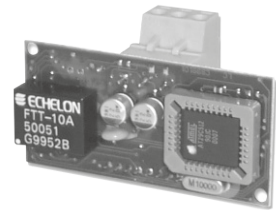
Free-cooling complete pipework layout



Lonworks serial board (Carel)

The Wavecom WMOD2B modem transmits data, faxes, SMS, vocal calls in order to monitor the unit's regularly.

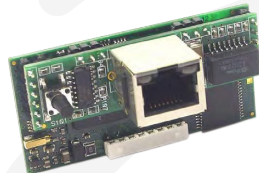
SIM card required.



GSM modem kit

The Wavecom WMOD2B modem transmits data, faxes, SMS, vocal calls in order to monitor the unit's regularly.

SIM card required.



Carel pCOWEB Ethernet board

(SNMP or BACNET protocol) + "HIWEB" supervision software

HiWeb supervision software provides

- Unit status display.
- Display of active alarms and alarm history.
- Records 10 pre-set variable data information.
- Download records by web browser or via FTP.
- Modification of main parameters.
- E-mail alert sent in the event of an alarm.

Supervision monitoring via the following protocols:

- SNMP v1 & v2c protocol.
- BACnet Ethernet or BACnet/IP.



Carel pCOWEB Ethernet board (SNMP or BACNET protocol)

The optional pCOWeb (PCO10*0W*0) board allows all pCO controllers, with the exception of pOCB to interface with an Ethernet network.

- The pCOWeb board allows the controller to connect with an Ethernet 10 Mbps network.
- access to pCO* information (network variables and parameters) via an Internet browser such as Internet Explorer™ installed on a PC and connected on line via TCP/IP at pCOWeb (see Web server).
- Connection to supervision network which uses one of the following 6 rnet ISO8802-2/8802-3 BACnet/IP.

Innovation

Multi-Function Systems

Reducing greenhouse gas emissions is one of the key challenges of our generation.

GalxC has long recognised this initiative, putting it in its forefront of priorities and harnessing oneself into the task of carefully selecting highly efficient energy saving systems within its portfolio of products.

GalxC are proud to introduce the Multifunction MCP & LCP range produced by Galletti with excellent COP rating (5 a minimum) providing simultaneous chilled & heated water for air conditioning or process applications.



MCP Residential Range

7kw - 50kw



- Total heat recovery reversible heat pump
- Scroll compressors
- Single compressor
- Cooling capacity from 7 to 50 kW
- Hot water up to 60°C

LCP Commercial & Industrial Range

- Total heat recovery reversible heat pump
- Scroll compressors,
- Dual-circuit ,2 or 4 compressors,
- Cooling capacity from 51 to 318 kW
- Heating capacity from 55 to 351 kW
- Capable of 400 Kw hot water up to 55°C

50kw - 350kw



- Simultaneous Cooling & Heating via smart heat recovery system
- Sanitary Hot Water solution
- Hydrogenic Humidity Control
- 15 models
- Standard & Low Noise options
- Smart defrost
- COP of 5 as a minimum

Computer Rooms & Data Centres Innovative Cooling Solutions



GalxC Climate Control are able to deliver a most improved infrastructure for cooling efficiency, providing the opportunity to reduce energy costs within data centre environment.

No two data centres are alike; hence we offer tailor-made solutions to ensure best cooling efficiency for each project GalxC Climate Control are capable to provide a full turnkey operation, with a wide range of options available to deal with any project size, whether it is a single computer room or a data centre venture.

Area of Expertise

- Computer Rooms
- Data Centres
- Telecom Switch Stations
- Clean Rooms
- Laboratories



Option Available

- Water Chillers
- Free Cooling
- CRAC / CRAH
- Cold / Hot Aisle Containment
- Close Coupled Cooling
- High Density Cooling
- In Row Cooling
- In Rack Cooling
- Overhead Cooling:
 - Chimney or Ducted
- Micro Containers
- Telecom
- Supplemental Cooling
- Portable Cooling



Why GalxC[®]?

GalxC Climate Control product range is specifically designed for critical applications where precise conditioning of air is essential.

The energy efficient range includes cooling applications from 2.7kw to 236kw / individual module including liquid free cooling / mechanical cooling, DX with the use of R410C & R134a Refrigerant.

GalxC Climate Control range is suitable for high precision air conditioning applications is essential such as data centres, medium and low-density server environment, telecom switch station, medical operation theatres and clean rooms.

Close Control Range

TREF



Close Control air conditioning unit
Range: 22,1 - 236,1 kW

Standard features

DX Versions:

- A - Air-cooled units, with remote condenser
- D - Dual-Cooling air-cooled units, with remote condenser
- F - Indirect Free-Cooling units, with remote dry-cooler
- Q - Dual-Cooling water-cooled units
- W - Water-cooled units, for Cooling-Tower or Dry Cooler applications
- Z - Water-cooled units, for city water applications

Refrigerating circuit:

- Rotalock connection to make the installation easier
- Expansion valve with external equalization
- Filter dryer and sight glass
- Phase sequence relay
- HP manual pressure switch and LP automatic pressure switch

CW versions:

Modulating 3-way valve

NRG



Close Control air conditioning unit
Range: 22,1 - 236,1 kW

Standard features

- Inverter-driven compressor unit BLDC
- Continuous modulation of the Cooling Capacity
- Ecological refrigerant R410A
- Backward curved blades fans with EC motors as standard

Air-flow configuration:

- D - Down flow
- U - Up flow
- X - Displacement

JREF



Close Control air conditioning unit
Range: 5,9 - 22,2 kW

Standard features

DX Versions:

- A - Air-cooled units, with remote condenser
- W - Water-cooled units, for Cooling-Tower or Dry Cooler applications
- Z - Water-cooled units, for city water applications

Refrigerating circuit:

- Rotalock connection to make the installation easier
- Expansion valve with external equalization
- Filter dryer and sight glass
- Phase sequence relay
- HP manual pressure switch and LP automatic pressure switch

CW versions:

Modulating 3-way valve

Air-flow configuration:

- D - Down flow
- U - Up flow

JREF R



Close Control air conditioning unit
Range: 5,9 - 23,4 kW

Standard features

DX Versions:

- A - Air-cooled units, with remote condenser
- D - Dual-Cooling air-cooled units, with remote condenser
- F - Indirect Free-Cooling units, with remote dry-cooler
- Q - Dual-Cooling water-cooled units
- W - Water-cooled units, for Cooling-Tower or Dry Cooler applications
- Z - Water-cooled units, for city water applications

Refrigerating circuit:

- Rotalock connection to make the installation easier
- Expansion valve with external equalization
- Filter dryer and sight glass
- Phase sequence relay
- HP manual pressure switch and LP automatic pressure switch

CW versions:

Modulating 3-way valve

HRC



Close Control Unit for high density systems
Range: 3,0 - 44,7 kW

Standard features

- Spot Cooling: where and when you need it
- Air-flow Switch
- Full Accessibility
- High pressure radial fans with backward curved blades
- High efficiency hydrophilic finned coil with aluminium structure
- Two drain pans made of AISI 430 stainless steel EDX
- Hydraulic connections from the top and from the bottom
- Powder-coated metal sheet structure
- Rapid electrical connections
- Footprint only 300 x 1200 mm or 600 x 1200 mm
- Fully insulated panels
- 2 or 3 way water valve, modulating by means of a 0-10 V signal
- Programmable control with LCD display
- Several different air-flow configurations
- Modulating Air Flow in accordance to the cooling capacity for a much.....higher energy saving
- Condensing controls
- Built-in control for air-cooled units (modulating fan-speed control) with dedicated automatic breaker
- LAN connection up to 8 units

Telecom Range

HTWI/
HTWD



Close Control air conditioning unit
Range: 22,1 - 236,1 kW

Standard features

- Monobloc outdoor units for technological shelters with no..... People in (i.e. telecom shelters).
- Panels in peraluman with rounded edges.
- Up flow versions available.
- Down flow versions available with 1.7-meter-distance between return-.....and supply-air side.
- Plug type evaporator fans with backward curved blades.
- Direct driven condenser fans with forward curved blades.
- Full front accessibility for maintenance / servicing even with running.....unit.
- Electrical panel in a separated vane.
- Microprocessor control.
- Scroll or rotative compressor.
- Expansion valve with external equalization, filter and sight glass.
- Hydrophilic treated evaporating coil.

HTDI/
HTU/HTX



Close Control air conditioning unit
Range: 22,1 - 236,1 kW

Standard features

- Monobloc indoor units for technological ambients with no people in.
- Panels made in galvanized and powder coated RAL9002 metal..... sheet with rounded edges.
- Up flow, down flow or displacement versions available.
- Plug type evaporator fans with backward curved blades.
- Direct driven condenser fans with forward curved blades.
- Full front accessibility for maintenance/servicing even.... with running unit.
- Electrical panel in a separated vane.
- Microprocessor control.
- Scroll or rotative compressor.
- Expansion valve with external equalization, filter and sight glass.
- Hydrophilic treated evaporating coil.

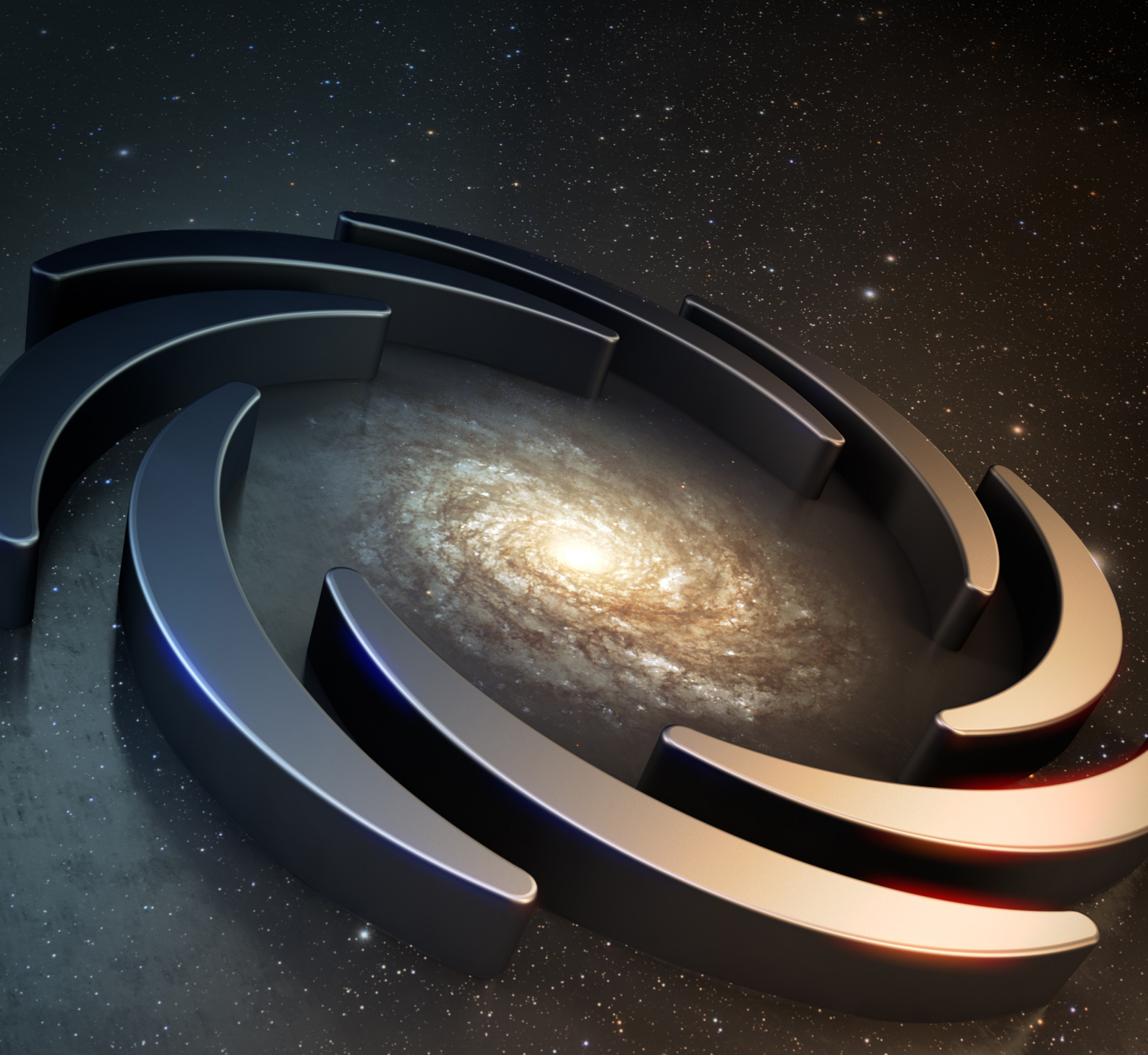
HTS



Close Control air conditioning unit
Range: 22,1 - 236,1 kW

Standard features

- Split unit complete with outdoor Moto condenser and indoor evaporating.....Part (ceiling- or wall-mounted)
- Programmable microprocessor
- 6-poles condenser fan for a low noise level
- Multi-speed indoor fans
- Double drain pain
- Adjustable air discharge grill
- Plug Fan
- Duct able execution



“GalxC are dedicated in the design and delivery of new energy efficient systems.

To deliver systems like this we needed to identify and understand the current technology available today”

Innovation *now*

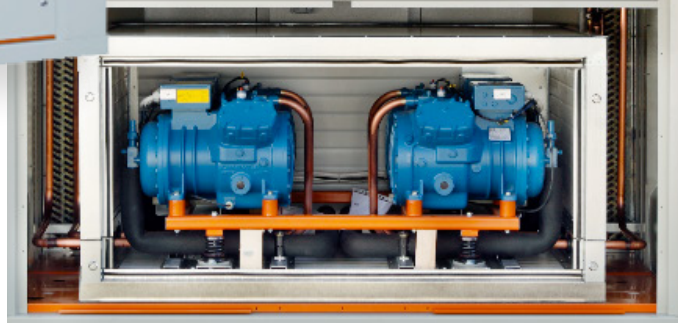
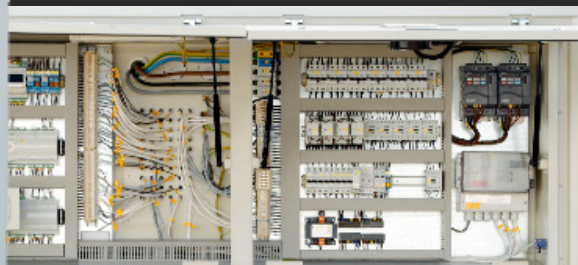
GalxC Group - Southampton - UK
galxc.co.uk



Galx°C[®]



InnovationTM



Naturally Greener



“Essential Green Technology via Cutting Edge Solutions”

Hydrocarbon Free-Cooling Range

Unique Features & Maximum Safety



Innovation™

GalxC[®] Hydro~Core[™]

Hydrocarbon R290 Range

Fully integrated, ambient sensitive Hydraulic Circuit
Ultimate safety via a unique design
Advanced design resulting in reduced refrigerant charge, overall weight & dimension
Modulating and continuous change-over between mechanical & free-cooling operation to maximise efficiency
Innovative approach with advanced structural design
Two separate plenum compartments
Single compressor / Circuit
4 Circuits / Chiller
Fully compatible for outdoor application
All safety features, in line with HC system requirements



HP sealed pressure switch / circuit
LP sealed pressure switch / circuit
Differential oil pressure switch / compressor
Fluid Flow switch
HC Leak detection device
Dual mechanical Compartment
Run & Stand-By Ventilation fans
Alarm relay without mute / cancellation until suitable repair carried out
All switch gear & controls externally located
Mechanical & Free Cooling/
Mechanical only Options
Medium & low Temp applications throughout the range



Fully compatible, Carel integrated system
MODBUS gateway networkable comms port and configuration
Simplified interconnection module
0 - 10 V remote set point adjustment
Automatic changeover to emergency continuous operation in a case of main controller failure

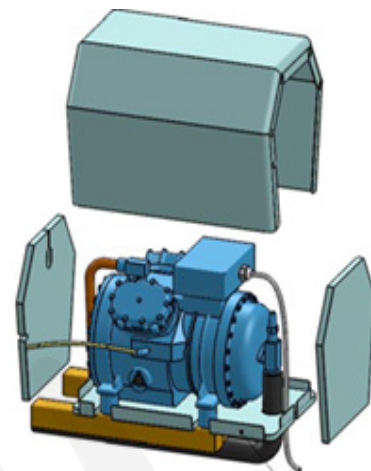
innovation[™]

GalxC[®] Hydro~core[™]

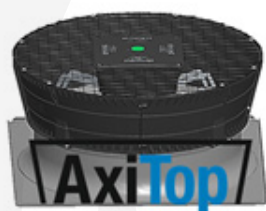
Acoustic Solution

Selected Model	Compressors Noise Reduction	Fans Noise Redution	Noise Level
HC130	-5	-5	42
HC160	-5	-5	43
HC180	-4	-6	44
HYC220	-4	-6	44

Sound Pressure Level at 10m- Reference 2x10⁻⁵ Nm⁻² British Standard 13487:2003



The Hydro~Core Range innovative design creates a perfectly harmonised engineering structure, thus taking full advantage of the latest Acoustic technology available by achieving exceptionally low noise level.



Inner diffuser & finger guard
Outer diffuser
Fan with wall plate & fixing bracket



The Flow Grid & AxiTop are attached to the intake & outlet section of the fan, thus drastically reducing the noise-generating disturbances, the Vortex strings are split when hitting the grille and considerably weakened as they flow through it.

Those combined factors help to reduce the sound pressure in the entire frequency range, in particular with the reduction of the lower frequency tonal range often associated as the main noise issue.

Well acoustically designed system, potentially elevate noise regulation issues arising during planning permission stages.

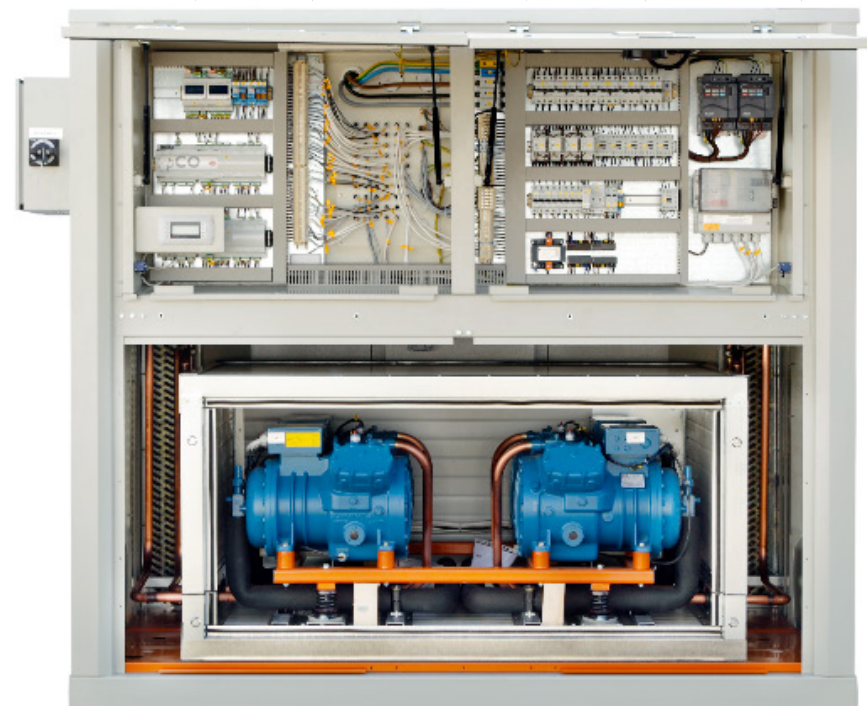
innovation[™]

GalxC[®] Hydro~core[™]

Free-Cooling Range



Frame	Model	Dimensions	No. fans	No. circuits	Refrigerant charge/circuit	Total Refrigerant charge	Cooling KW
A	HC90	2900x1820x1960	4	4	3.5kg	13.6kg	90kw
A	HC110	2900x1820x1960	4	4	3.9kg	13.6kg	110kw
B	HC130	4600x2220x2250	4	4	4.5kg	18.0kg	130kw
B	HC160	4600x2220x2250	6	4	5.0kg	20.0kg	160kw
B	HC180	4600x2220x2250	6	4	5.4kg	21.6kg	180kw
C	HC220	5600x2220x2250	8	4	7.2kg	28.8kg	220kw
C	HC250	5600x2220x2250	8	4	8.5kg	34.0kg	220kw



Innovation[™]

Innovation™



GalxC[®] Hydro~Con Genius[™]

Hydrocarbon R290 Range

Special Features

- Minimal refrigeration charge, 500 grams / circuit. (1kg)
- Fully modular system.
- Ultra Low Noise Application 32db(A) (day) & 27db(A) (night time).
- Safe & Easy access to all components.
- Fully compatible for outdoor application.
- All safety features, in line with HC system requirements.
- Unique solution to mechanical & electrical compartment separation.
- All switch gear or soft touch buttons located behind the lockable cover.
- Continuous change-over between mechanical & free-cooling (optional mode).



45kW @ 24 to 18 Deg. C

Free & Mechanical Cooling
Hydro~Con Tolenno[™] 45

+

Hydro~Con Onyx[™] 45

=

Hydro~Con Genus XLV

90kW @ 24 to 18 Deg. C

Free & Mechanical Cooling
Hydro~Con Tolenno[™] 90

+

2 x Hydro~Con Onyx[™] 45

=

Hydro~Con Genus XC

60kW @ 0 to -6 Deg. C

Mechanical Cooling
Hydro~Con Tolenno[™] 60

+

Hydro~Con Onyx[™] 60

+

Hydro~Con Altus[™] 60

=

Hydro~Con Genus LX



*Naturally
Greener*



Innovation[™]

"Essential Green Technology via Cutting Edge Solutions"

GalxC[®] Hydro~Con Avius[™]

Multi-Purpose Split Free Cooling Water Chillers & R290 Scroll Compressors

Avius 10

Noise Level @ 10M - 32dB(A)

Noise Level @ 10M - 44dB(A)

Ambient Temperature	8	10	12
Cooling Duty (kw)	11	9	7
Medium Off Temperature (Deg. C)	14	15	16
Free Cooling - 24 hours %	36.9	50.4	60.4
Free Cooling 8.00 - 18 %	28.0	40.7	50.4
Free Cooling Reduction / Year	73% For 24 hour, 62% for 8:00am to 6:00pm		

Avius 20

Ambient Temperature	8	10	12
Cooling Duty (kw)	19	16	12
Medium Off Temperature (Deg. C)	14	15	16
Free Cooling - 24 hours %	24.9	36.4	50.4
Free Cooling 8.00 - 18 %	28.0	40.7	51.4
Free Cooling Reduction / Year	73% For 24 hour, 62% for 8:00am to 6:00pm		

Avius 40

Ambient Temperature	8	10	12
Cooling Duty (kw)	40	33	27
Medium Off Temperature (Deg. C)	14	15	16
Free Cooling - 24 hours %	36.9	50.4	52.6
Free Cooling 8.00 - 18 %	28.0	40.7	51.7
Free Cooling Reduction / Year	67% For 24 hour, 62% for 8:00am to 6:00pm		

*Naturally
Greener*



GalxC[®] Hydro~Con Aptium[™]

Multi-Purpose Water Chillers With R290 Scroll Compressors

Design Conditions & Specification Summary	
Refridgerant Type	R290
Refridgerant Qty.	1.100g
Nominal Capacity	10.35kw
Power Consumption (Total)	7.34kw
Maximum Operating Current	10.1A
Voltage	400/3/50
Fluid Type	30% / 70%
Inlet Fluid Temperature	12 Deg. C
Outlet Fluid Temperature	7 Deg. C
Coolant Flow	3.73 m ³ /h
Ambient	35 Deg. C
Length	1449
Width	900
Height	1414
Coolant Connections	DN 32

Design Conditions & Specification Summary	
Refridgerant Type	R290
Refridgerant Qty.	600g
Nominal Capacity	10.35kw
Power Consumption (Total)	3.67kw
Maximum Operating Current	10.1A
Voltage	400/3/50
Fluid Type	30% / 70%
Inlet Fluid Temperature	12 Deg. C
Outlet Fluid Temperature	7 Deg. C
Coolant Flow	1.87 m ³ /h
Ambient	35 Deg. C
Length	1324
Width	798
Height	936
Coolant Connections	DN 25

Optium 20



Noise Level @ 10M - 44dB(A)

Optium 10



Noise Level @ 10M - 43dB(A)
Noise Level @ 10M - 44dB(A)

GalxC[®] - Green Revolution



“Essential Green Technology via Cutting Edge Solutions”

GalxC[®] - Process Cooling Range



PCCh²o



PCCh²o

*Naturally
Greener*



"Essential Green Technology via Cutting Edge Solutions"

InnovationTM

The latest innovation in Industrial Process Cooling

Air Cooled Process Cooling Chillers From 5kW to 225kW



3 Operating Characteristics
R410A as standard
R134A high ambient
R404A low temperature

Standard features

- Integral by-pass
- Fill and vent tank
- Internal flow switch
- Integral 3 bar pump
- Integral hydraulic tank
- Auto-adaptive set point
- Electronic expansion valve
- Modulating fan speed control
- User friendly controller
- Inlet & outlet ball valves, fitted into integral pump



10 Good reasons to opt for the PCC

- Highly Efficient
- Servicing Made Easy
- User-Friendly Controller
- Optimum Performance
- Advanced Fluid Control
- Improved Safety Features
- All European brand components
- Correct refrigerant choice, to suit application
- 2 years Manufacturer Warranty at no additional cost
- Dedicated Product Support Team throughout the UK



Improved Design

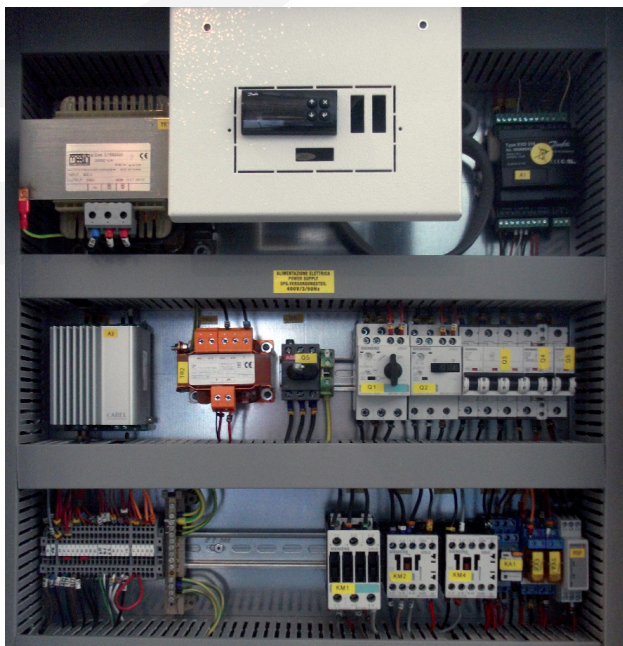
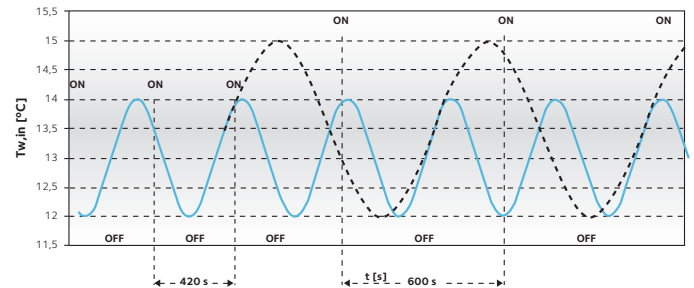
Easy Access Servicing and Optimum Performance

1. Fill and Vent Tank
2. Flow Switch
3. Condenser Fans & Safety Fan Guard
4. Integral By-Pass (with external adjustable valve)
5. Hydraulic Pressure Gauge (Rear output panel)
6. Upright Hydraulic Tank
7. Inlet & Outlet Isolating Ball Valves
8. Crank Case Heater
9. High Efficiency Scroll Compressor
10. Hydraulic Pump
11. Filling Point
12. LP & HP Pressure Gauges (Front Outer Panel)
13. Electrical Panel & Controller

Auto Adaptive

Advanced microprocessor control

- Automatically adjusts the unit's set point to the ambient conditions in order to reduce the power consumption.
- Enables lower water volume in the hydraulic circuit
- Reduces number of compressor start-ups



Selectable options

- Correct refrigerant for application
 - ~ R410A – standard operation
 - ~ R134A – high ambient conditions >45 degrees
 - ~ R404A – low water temperature <-8 degrees
- Inverter driven compressor for close control
- Expansion tank for pressurised system
- Centrifugal fans (top/front or rear air discharge)
- 5 Bar Pump
- EC Brushless Fans
- Remote Communication

Process Cooling Chiller

PCC CS sizes		PCC005	PCC010	PCC015	PCC020	PCC025	PCC030	PCC035	PCC040	PCC045	PCC050	PCC055
@ Water 20/15°C Air 25°C glic0%												
Cooling Capacity	kW	6.1	12.0	18.3	22.8	26.4	30.0	34.5	40.1	45.7	51.0	56.1
Tot. Abs. Power (Fans Incl.)	kW	1.1	2.9	3.6	5.0	6.0	6.0	7.4	8.1	9.5	10.7	12.3
Tot. Abs. Current (Fans Incl.)	A	2.2	5.1	6.6	8.5	10.0	9.6	11.8	13.3	16.1	18.0	20.6
EER (Incl. Fans, water press drops)		5.6	4.1	5.1	4.5	4.4	5.0	4.7	4.9	4.8	4.8	4.6
Water Flow	l/h	1055	2069	3144	3924	4549	5166	5942	6903	7874	8787	9669
Pressure drop, water side	kPa	27	23	33	51	38	49	65	38	49	47	56
Available head, standard pump	kPa	226	396	347	298	283	346	318	325	292	270	396
Available head, uprated pump	kPa	317	550	498	518	519	496	557	558	519	493	493
@ Water 15/10°C Air 25°C glic0%												
Cooling Capacity	kW	5.3	10.2	15.5	19.5	22.6	26.0	29.8	34.8	39.8	44.3	48.8
Tot. Abs. Power (Fans Incl.)	kW	1.1	2.8	3.5	4.9	5.8	5.7	7.0	7.8	9.1	10.3	11.9
Tot. Abs. Current (Fans Incl.)	A	2.2	4.9	6.5	8.4	9.8	9.2	11.3	12.8	15.5	17.4	19.9
EER (Incl. Fans, water press drops)		4.8	3.6	4.4	4.0	3.9	4.5	4.3	4.5	4.4	4.3	4.1
Water Flow	l/h	908	1745	2670	3344	3887	4464	5132	5980	6835	7624	8393
Pressure drop, water side	kPa	20	17	24	38	29	38	50	29	38	36	44
Available head, standard pump	kPa	257	413	373	334	321	367	346	352	327	311	427
Available head, uprated pump	kPa	336	568	526	541	541	521	590	590	560	539	525
@ Water 12/7°C Air 35°C glic0%												
Cooling Capacity	kW	4.3	8.2	12.3	15.5	18.0	21.1	24.4	28.3	32.6	36.0	39.5
Tot. Abs. Power (Fans Incl.)	kW	1.4	3.3	4.2	5.8	6.9	6.7	8.1	9.1	10.6	12.1	14.0
Tot. Abs. Current (Fans Incl.)	A	2.6	5.6	7.6	9.7	11.5	10.7	13.0	14.9	17.9	20.3	23.3
EER (Incl. Fans, water press drops)		3.2	2.5	2.9	2.7	2.6	3.2	3.0	3.1	3.1	3.0	2.8
Water Flow	l/h	742	1401	2119	2653	3088	3629	4195	4857	5592	6178	6780
Pressure drop, water side	kPa	14	12	16	25	19	26	35	20	26	25	30
Available head, standard pump	kPa	287	430	401	373	363	387	373	378	361	352	461
Available head, uprated pump	kPa	365	585	556	564	563	548	624	625	602	590	561
@ Water 5/0°C Air 25°C glic25%												
Cooling Capacity	kW	3.8	6.1	10.9	14.0	16.3	18.7	21.4	25.2	28.9	32.2	35.2
Tot. Abs. Power (Fans Incl.)	kW	1.1	2.6	3.3	4.7	5.5	5.3	6.4	7.2	8.6	9.6	11.1
Tot. Abs. Current (Fans Incl.)	A	2.2	4.6	6.1	8.1	9.3	8.5	10.3	11.8	14.6	16.2	18.7
EER (Incl. Fans, water press drops)		3.4	2.4	3.3	3.0	3.0	3.5	3.4	3.5	3.4	3.4	3.2
Water Flow	l/h	710	1139	2048	2616	3051	3497	4009	4716	5410	6041	6586
Pressure drop, water side	kPa	16	9	18	29	22	29	38	23	30	28	34
Available head, standard pump	kPa	286	459	419	388	377	403	389	395	377	367	480
Available head, uprated pump	kPa	362	620	581	586	585	571	652	653	630	616	585
@ Water 0/-5°C Air 25°C glic25%												
Cooling Capacity	kW	3.2	4.2	9.2	11.9	13.9	15.8	18.0	21.3	24.6	27.4	29.7
Tot. Abs. Power (Fans Incl.)	kW	1.1	2.5	3.2	4.7	5.4	5.1	6.2	6.9	8.3	9.3	10.9
Tot. Abs. Current (Fans Incl.)	A	2.2	4.4	6.0	7.9	9.2	8.3	9.9	11.4	14.2	15.7	18.3
EER (Incl. Fans, water press drops)		2.9	1.7	2.9	2.5	2.6	3.1	2.9	3.1	3.0	3.0	2.7
Water Flow	l/h	596	788	1729	2224	2602	2956	3369	3993	4610	5136	5569
Pressure drop, water side	kPa	11	<5	13	22	16	21	28	17	22	21	25
Available head, standard pump	kPa	305	475	436	410	401	415	406	410	397	390	501
Available head, uprated pump	kPa	387	636	598	600	599	589	675	674	656	646	607



“Essential Green Technology via Cutting Edge Solutions”

Full Range Specification

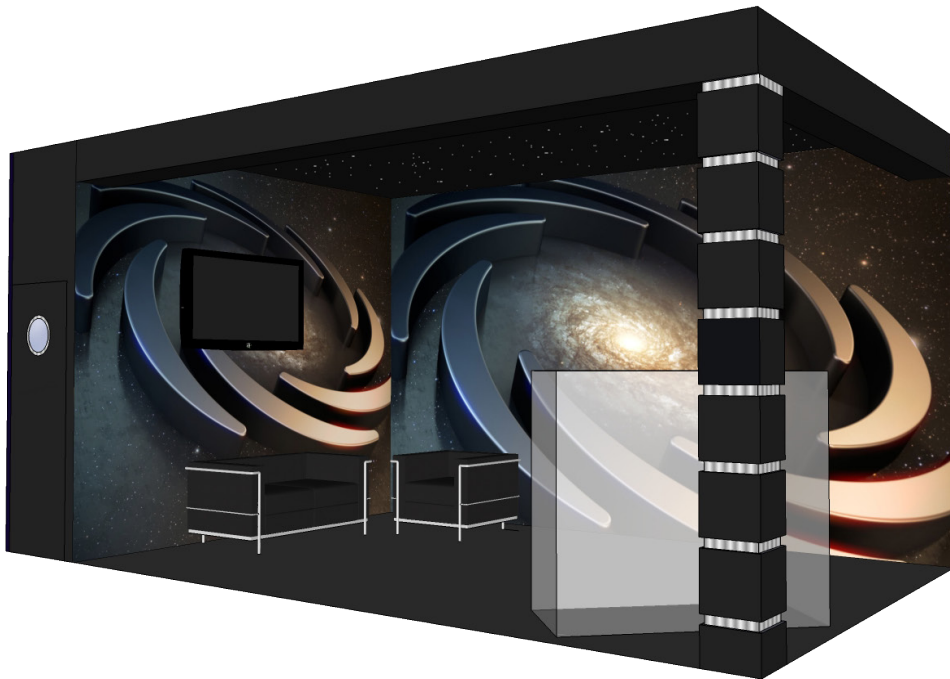
PCC CS sizes		PCC060	PCC065	PCC070	PCC090	PCC105	PCC120	PCC140	PCC160	PCC180	PCC210
@ Water 20/15°C Air 25°C glic0%											
Cooling Capacity	kW	60.5	69.3	79.9	89.5	103.7	114.5	143.3	157.0	176.5	195.1
Tot. Abs. Power (Fans Incl.)	kW	11.9	14.7	14.5	17.9	21.4	24.2	30.8	34.1	40.1	44.6
Tot. Abs. Current (Fans Incl.)	A	20.7	25.3	26.9	32.4	35.7	40.3	51.3	56.6	66.1	73.4
EER (Incl. Fans,water press drops)		5.1	4.7	5.5	5.0	4.9	4.7	4.7	4.6	4.4	4.4
Water Flow	l/h	10417	11937	13769	15424	17875	19733	24691	27048	30405	33610
Pressure drop, water side	kPa	44	57	76	65	88	107	83	100	91	110
Available head, standard pump	kPa	397	360	291	283	358	316	333	306	299	392
Available head, uprated pump	kPa	494	542	566	559	509	467	607	583	579	545
@ Water 15/10°C Air 25°C glic0%											
Cooling Capacity	kW	52.5	60.3	69.3	78.3	90.1	99.2	124.5	136.7	154.6	171.5
Tot. Abs. Power (Fans Incl.)	kW	11.4	14.0	13.9	17.2	20.6	23.5	29.6	32.8	38.4	42.6
Tot. Abs. Current (Fans Incl.)	A	19.9	24.1	25.9	31.2	34.5	39.1	49.3	54.5	63.5	70.2
EER (Incl. Fans,water press drops)		4.6	4.3	5.0	4.6	4.4	4.2	4.2	4.2	4.0	4.0
Water Flow	l/h	9020	10361	11922	13462	15496	17065	21416	23508	26580	29483
Pressure drop, water side	kPa	34	44	59	51	68	82	65	78	71	87
Available head, standard pump	kPa	428	398	324	317	404	373	365	344	336	434
Available head, uprated pump	kPa	525	584	599	593	556	524	635	617	613	587
@ Water 12/7°C Air 35°C glic0%											
Cooling Capacity	kW	42.7	49.2	56.4	64.0	73.5	80.7	102.3	111.5	126.5	139.0
Tot. Abs. Power (Fans Incl.)	kW	13.3	16.2	16.8	20.2	24.1	27.6	33.7	37.9	44.6	50.1
Tot. Abs. Current (Fans Incl.)	A	23.0	27.7	30.6	36.1	40.0	45.6	56.0	62.7	73.5	82.2
EER (Incl. Fans,water press drops)		3.2	3.0	3.4	3.2	3.1	2.9	3.0	2.9	2.8	2.8
Water Flow	l/h	7337	8455	9691	10992	12627	13855	17568	19141	21719	23866
Pressure drop, water side	kPa	23	31	40	36	47	56	45	54	49	59
Available head, standard pump	kPa	460	439	360	354	451	431	398	384	378	484
Available head, uprated pump	kPa	560	628	634	629	604	583	662	651	649	633
@ Water 5/0°C Air 25°C glic25%											
Cooling Capacity	kW	37.9	43.5	50.2	57.3	65.2	71.3	89.6	99.7	114.0	126.0
Tot. Abs. Power (Fans Incl.)	kW	10.5	12.7	12.9	15.8	19.3	22.2	27.3	30.3	35.5	39.2
Tot. Abs. Current (Fans Incl.)	A	18.5	22.0	24.4	28.9	32.4	37.1	45.6	50.5	58.9	64.8
EER (Incl. Fans,water press drops)		3.6	3.4	3.9	3.6	3.4	3.2	3.3	3.3	3.2	3.2
Water Flow	l/h	7103	8141	9397	10734	12209	13354	16785	18687	21356	23602
Pressure drop, water side	kPa	26	34	45	41	53	63	50	61	57	69
Available head, standard pump	kPa	481	459	374	368	470	450	415	397	390	498
Available head, uprated pump	kPa	585	657	659	654	629	609	689	674	672	654
@ Water 0/-5°C Air 25°C glic25%											
Cooling Capacity	kW	32.1	36.6	42.5	48.7	55.0	60.2	75.2	84.4	97.3	107.5
Tot. Abs. Power (Fans Incl.)	kW	10.1	12.2	12.6	15.2	18.8	21.8	26.4	29.3	34.3	37.9
Tot. Abs. Current (Fans Incl.)	A	17.9	21.2	23.9	28.0	31.6	36.4	44.2	48.8	56.8	62.7
EER (Incl. Fans,water press drops)		3.2	3.0	3.4	3.2	2.9	2.8	2.9	2.9	2.8	2.8
Water Flow	l/h	6022	6858	7966	9138	10328	11289	14107	15834	18262	20171
Pressure drop, water side	kPa	19	25	34	30	39	46	36	45	43	52
Available head, standard pump	kPa	501	486	396	391	499	484	438	423	417	527
Available head, uprated pump	kPa	607	685	681	677	659	644	707	696	694	681

"Essential Green Technology via Cutting Edge Solutions"

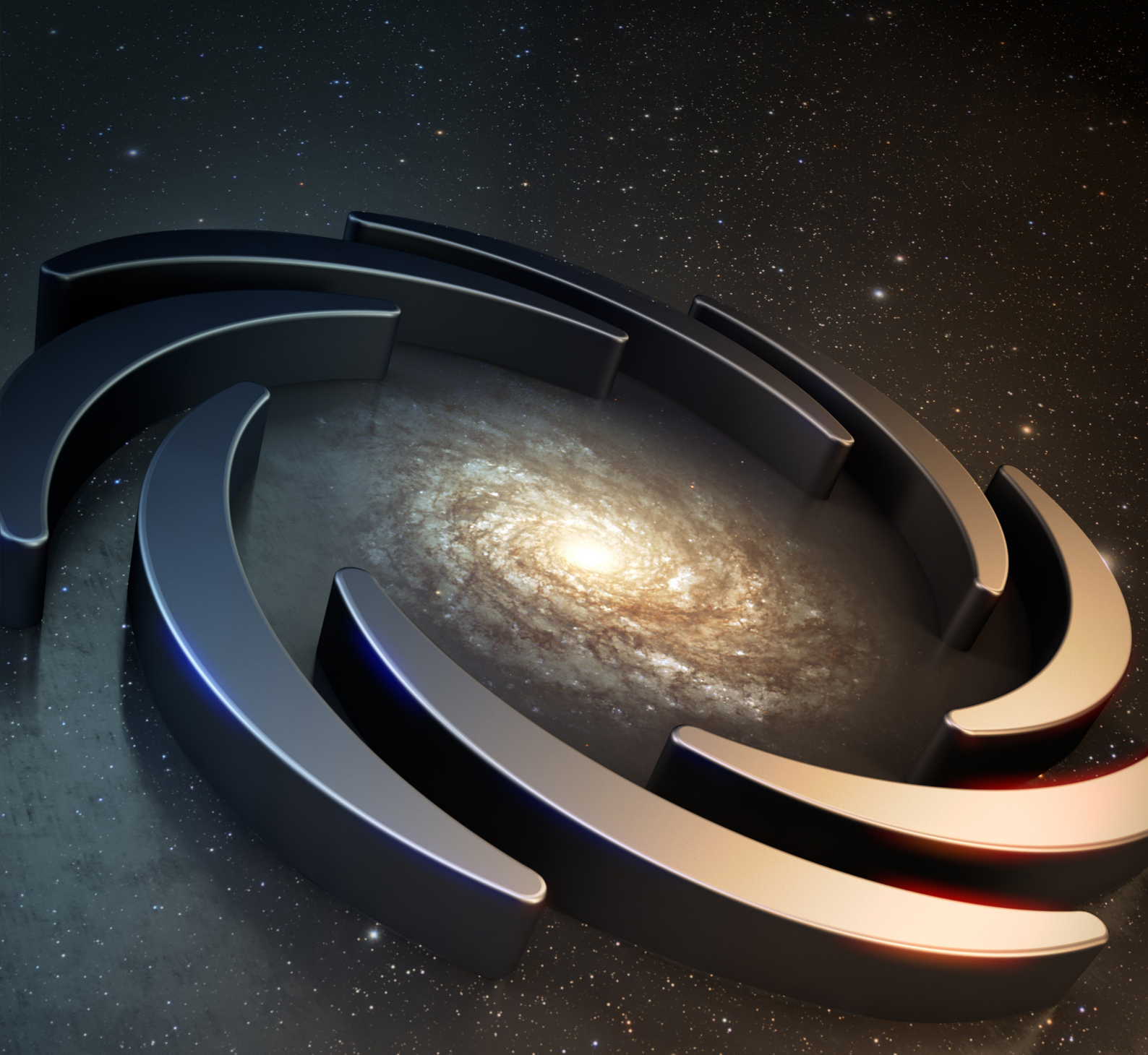


Galx°C Group
Southampton
UK

0845 094 2644
info@galxc.co.uk
galxc.co.uk



Innovation™



“We at GalxC pride ourselves on our professional service, practical expertise and ability to select the most cost effective solution to meet our customers needs.”

UK Land Line: 0845 094 2644 - International: +44(0)23 8086 7168
info@galxc.co.uk - galxc.co.uk

GalxC[®] - The Complete Service Solution

Why GalxC[®] Services?

- ✓ GalxC is committed to quality customer service.
- ✓ Operating in a diverse range of sectors within the industry.
- ✓ The business is led by a team of highly experienced engineers who hold many years of technical knowledge and are fully committed to delivering a prompt, efficient and value-for-money service, without compromising on quality.
- ✓ The company ethos is simple... 'Customer focus is our passion and priority'.
- ✓ GalxC with Nationwide coverage, responding effectively without incurring additional costs from excessive travelling.
- ✓ Each engineer carries up to date Van-Stock and is able to replenish ensuring minimum down time enabling "first time fix" throughout the UK.
- ✓ GalxC offer expert advice on all aspects across the Process Cooling & Air-Conditioning market accompanied with a high quality maintenance service.
- ✓ The range of services includes planning, design, installation, commissioning, servicing and maintenance.
- ✓ All of the solutions and systems provided by GalxC meet all current energy and environmental considerations.

Leading the delivery and execution of complete maintenance & service solutions.

GalxC has implemented a quick turnaround with a follow-up response to ensure any potential or actual fault discovered during the maintenance service to be reported to the Customer promptly so action may be taken as soon as possible.

It is always important to select a service provider who is capable of supporting the product and has a very strong affinity and understanding to the service & maintenance aspect, capable to provide a consistent and reliable service support as well as planned preventative service programs.

GalxC Cooling provides an efficient reporting system capable to deal with every application and ensure all inspected items / equipment are included within a check list.

Our Maintenance rates are very competitive, allowing local rates regardless of the location throughout.

Preventative Maintenance Visits

Following each maintenance visit an individual report will be presented for the Equipment covered confirming the Equipment has been correctly maintained. All on-site maintenance records will be completed and maintained.

Site Attendance

A GalxC Customer Service Engineer will be assigned to your site for preventative maintenance visits in order to maintain continuity.

All engineers attending site will conform to all site safety instructions and attend a site safety induction (if required). All maintenance visits will be pre-planned and confirmed with the relevant contact two weeks prior to the due date.

On arrival the GalxC Customer Service Engineer will report to the relevant contact before any works commence.

Nationwide Support Across the UK, 24/7

Operating throughout the UK (Mainland), 3 x off GalxC chiller service engineers are available at any time after normal working hours to take on the challenge and provide either technical support or if necessary attend site at short notice.

All calls are responded to by the Duty Manager, hence prompt response to deal with any potential problem with your cooling system.

GalxC Service & Maintenance Contract Provides essential & valuable benefits Extent of Cover

- ✓ Emergency Breakdown.
- ✓ Engineer available 24 hours per day 7 days per week.
- ✓ Targeted response time to suit customer's requirement.
- ✓ Structured Escalation Procedure.
- ✓ Detailed Preventative Maintenance visits.
- ✓ Access to our Technical Support Desk.
- ✓ Preference response time including Immediate hire options allowing continuous production, safeguarding your profits whilst the repair is being undertaken.
- ✓ No advance payment required, invoice issued following completed periodic maintenance service.
- ✓ No tie-in 12 months agreement.

Escalation

All calls will be dispatched and monitored by the Customer Service Department to ensure that the best available response time is met. Any problems arising are escalated in accordance with set parameters, in order to respond with appropriate levels of technical and managerial support.

All calls are made to one number:

0845 094 2644

24 hours a day, 365 days a year.



Stock holding ... Reducing the risk of downtime.

GalxC Customer Service Engineers carry a working van stock in order to reduce downtime and loss of production.

Other parts can be organised for next day delivery.

- Essential Glycol orders can be dealt with by our Service desk and delivered to your site expediently.
- Certain parts could be replaced by a competent person and so could be ordered directly to site.
- Other parts may require a refrigeration engineer to install in accordance with F-gas regulations and so our Service desk can order the essential component and programme an engineer to attend simultaneously.



GalxC®. Leading the delivery of integrated solutions for water chiller cooling systems



GalxC Group
Southampton
UK

0845 094 2644
info@galxc.co.uk
galxc.co.uk

